

# RT100 & RT200

---

## Suspension System

### Installation Manual

PROCEDURE FOR INSTALLING RT100 & RT200 SUSPENSION SYSTEM

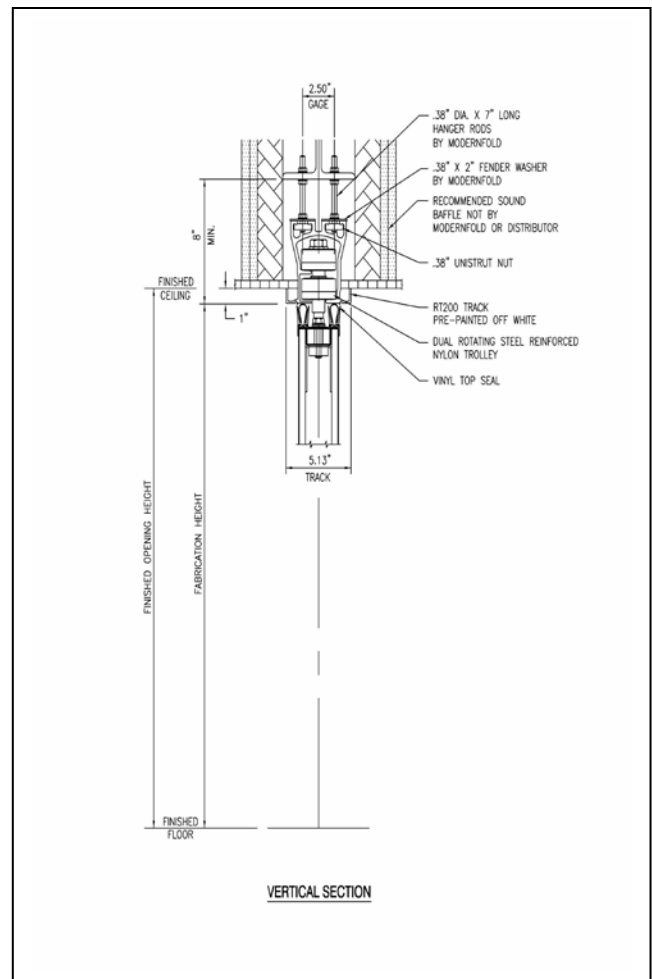
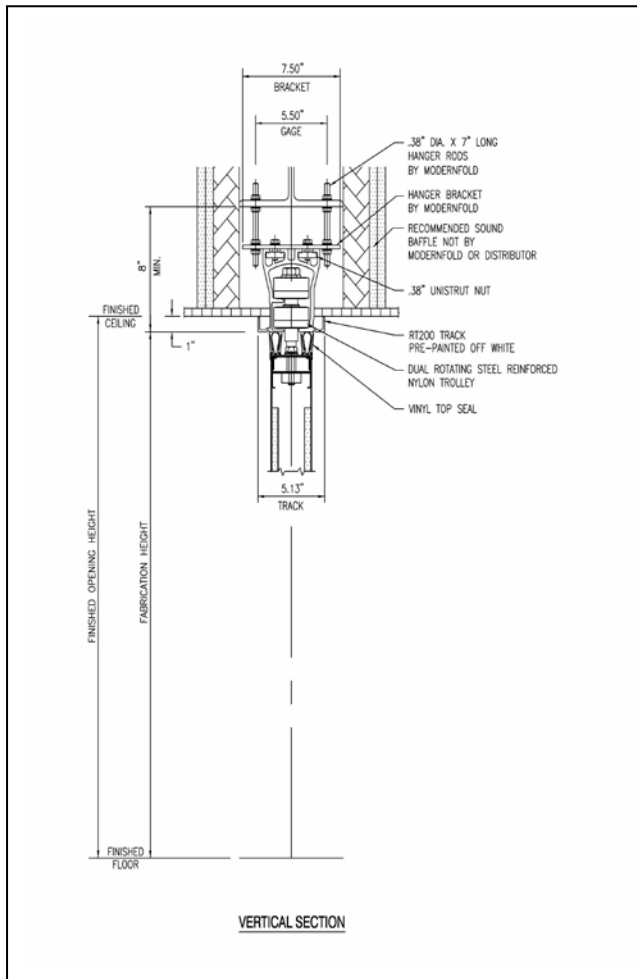
## Purpose

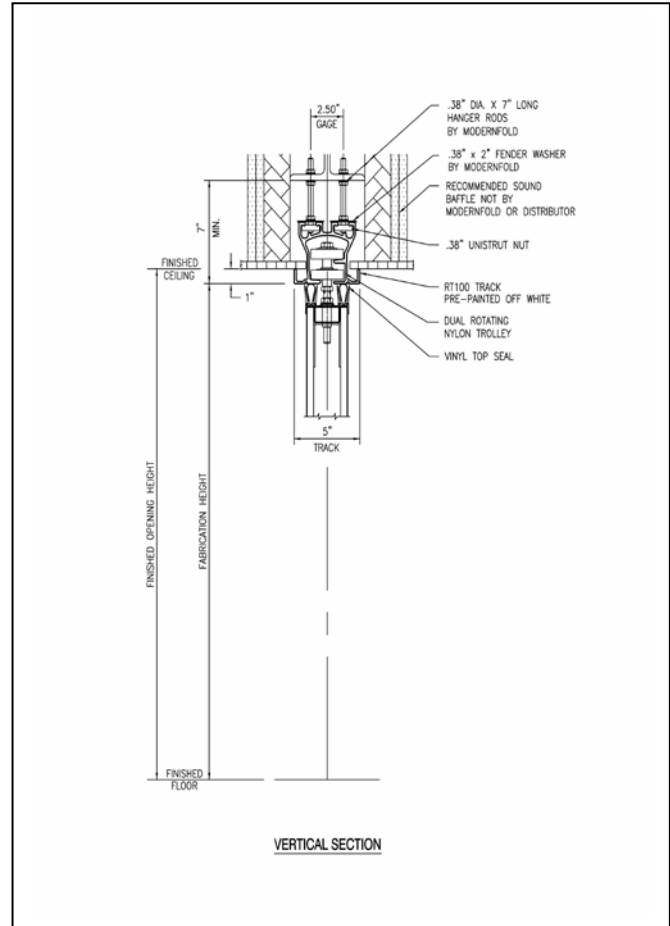
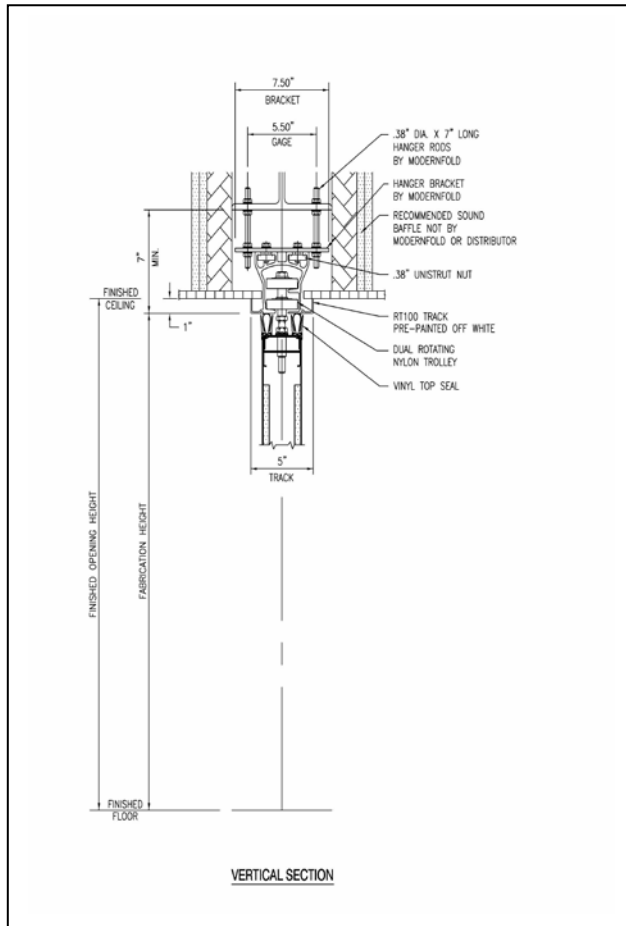
To properly document the correct methods and processes required for the installation of RT100 and RT200 suspension systems.

## Installation Instructions

### Step 1: Preparation to Install RT100 & RT200 Suspension System

Modernfold defines the preliminary installation as the installation of the suspension system and its related parts. The Acousti-Seal 931 and 941 single panel operable partitions and the Ultra-Seal can be installed on the RT100 and the RT200 suspension systems. Preliminary installation instructions for RT100 and RT200 are basically the same though the track usage differs with height and weight requirements.





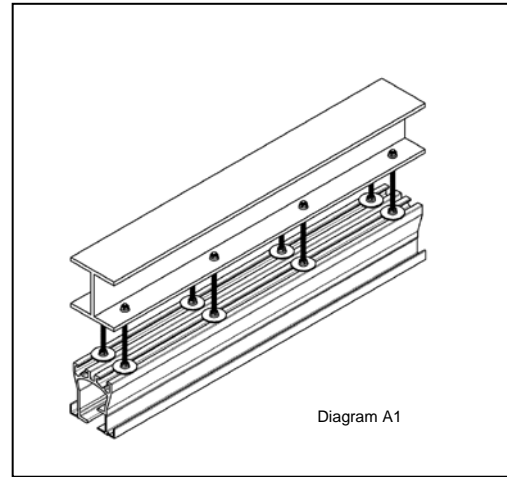
To ease the installation process and reduce the number of possible errors, it may help to place the pieces of the suspension system on the floor in their proper positions according to the layout drawings. For the RT100 or RT200 suspension systems, layout and drill or punch 7/16-inch (0.44-inch) diameter holes in the structural support according to the Hanger Rod Layout drawing. RT100 and RT200 suspension systems are bracket mounted only. The track is hung from the structural support by the hanger rods with a strut nut in the track channels. All track fabrication height adjustments can be made at the structural support, as necessary.

**NOTE: Be sure to note that the bracket spacing for the stack area is different from the rest of the opening. This is to handle the concentrated weight of the panels together in a small area.**

## Step 2: Installation of the Hanger Rods and Hanger Brackets

### Installing the Hanger Rods

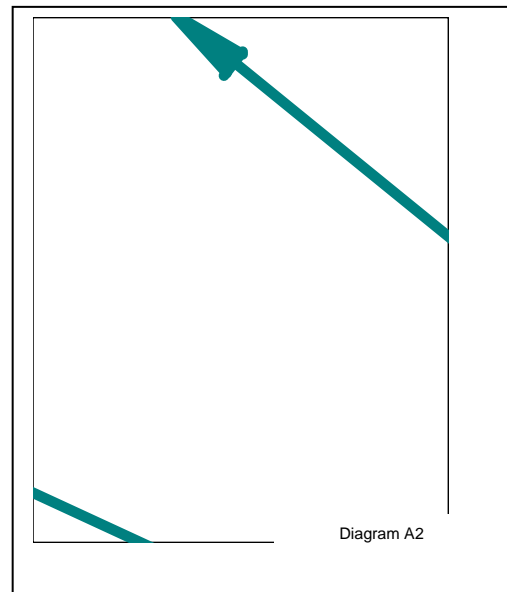
Attach the first two pairs of hanger rods to the structural support using 3/8-inch – 16 flange nuts on both sides of the support beam (RT100 and RT200). Then attach a pair of hanger rods at or near the lead end of the first section of track. This procedure will allow you to hang each end of the track section, and then install the remaining intermediate hanger rods. Alternatively, you can install all of the hanger rod pairs at the same time. This will allow you to attach the brackets sequentially, which may be easier for some job site conditions.



### Installation of Hanger Brackets

RT100 and RT200 track systems can be mounted at 2-1/2-inch hanger rod gage or at 5-1/2-inch hanger rod gage. The 2-1/2 - inch hanger rod gage has no hanger brackets in either the intersection or the intermediate track. On 2-1/2-inch hanger rod gage, the hanger rod is locked into a strut nut located in groove at the top of the track. A special heavy fender washer (109895-001) must be positioned between the top track groove and the 3/8-inch flange nut on both the RT100 and RT200 suspension system.

Hanger bracket plates are required for the 4'0" removable section. The 5-1/2-inch hanger rod gage requires hanger brackets that are mounted above the track. Starting at the stack end, mount the required number of brackets (from the Hanger Layout drawing) onto the track. Do not yet tighten any set screws that may be present on the bracket; you may want to adjust each bracket's position as the sections of track are hung.



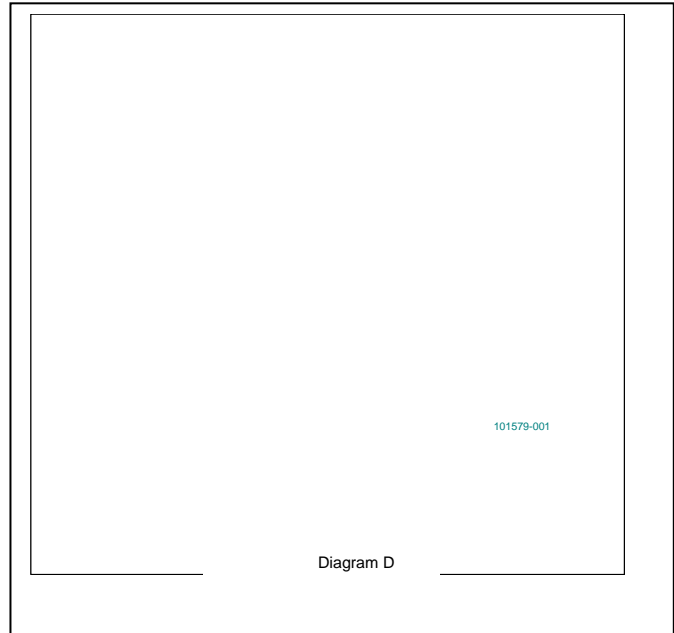
## Step 3: Installation of the Track

### **First Section**

Lift the track into place and slide the brackets (if applicable) over the hanger rods, either at each end or sequentially, depending upon which method of hanger rod installation you used. Do not completely tighten the flange nuts at this time. You will be adjusting them as each section of track is installed.

### **Intermediate Sections**

Each track section is hung in the same manner as the first section. Attach a pair of hanger rods near each end of a section (or for each bracket if applicable), securing to the structural support with a flange nut on both sides. If the attachment at the structure is not a through hole connection, only one flange nut is required.



### **Final Section**

The final (removable) track section is also hung by attaching the hanger rods to the structural support and to the brackets on the track. Two 0.156-inch spring roll pins (101579-001) connect the bottom sections of the track intersection together. However, when using the RT100 or RT200 suspension systems, the 4'0" removable section of track can be removed from the brackets to allow for the panel installation.

### **Joining Track Sections RT100 and RT200**

RT100 and RT200 suspension systems are joined at the top using a splice plate which is mounted into the top grooves of the track with four (109976-001) bolts. They are bolted through the splice plate into four (109896-001) 3/8-inch #16 strut nuts. Two .156-inch spring roll pins (101579-001) connect the bottom sections of the track intersection together. Be sure that the sections are properly aligned, with no protruding edges to catch on the top sweeps. When installing the splice plate and spring roll pins make sure that they evenly span each track section (see diagram D).

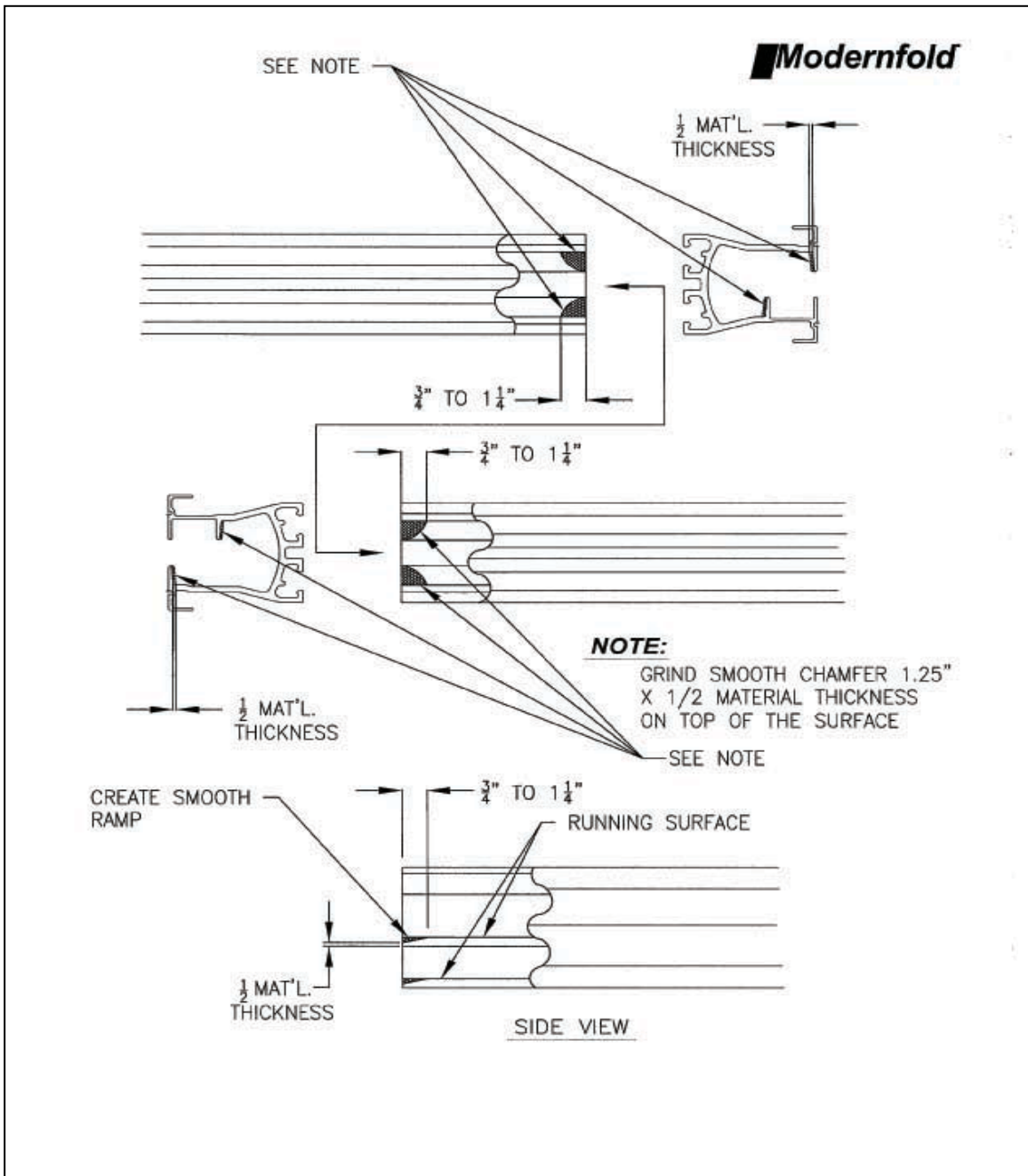
### **Joining Track Sections RT100 and RT200**

A special bar is available for mounting directly into concrete.

---

## **Step 4: Grinding Track Intersections**

Note: The RT100 and RT200 suspension systems use an asymmetrical track shape. When installing these sections, be sure that each section is properly aligned with the previous one (i.e., the track shapes match each other). However, this is not practical on all track layouts such as layouts with multiple “T”, “L” and stack intersections. In layouts where the track shapes do not match at a splice, the lead edges of the internal “ledge” must be slightly beveled for a smoother operation. (See Below)



**Step 5: Panel Installation**

If the suspension system was installed at an earlier date, it should be checked for level and readjusted as necessary before panels are installed. Also confirm that **all** hardware has been properly tightened.

Prior to hanging the panels, conduct the following inspections:

- Inspect each panel for damage; make any required repairs.
- Inspect trolley pendant bolts for damage

Identify each panel and stage them in preparation for hanging. The panels are hung beginning with the rail panel (#1), then #2, #3, etc. (All panels are numbered from the stack end to the lead end of the opening). In order to insert the panel trolleys into the track, you must remove the 4-foot section of the track at the lead end of the opening.

With all installations, begin with the trail end trolley/panel (#1). Lift the panel and insert the trolleys into the track.

**NOTE: Be Careful when lifting each panel to avoid placing weight on the bottom edge of the panel and the bottom seal. The bottom seal mechanisms can be damaged as a result. Note: If you have an expandable panel closure, the panel with the expandable nose section is the #1 (trail) panel in the hanging sequence.**

Slide panel (#1) toward the stack end of the track. Again taking care to avoid placing weight on the bottom seal, hang the next trolley/panel combination (#2). Continue to hang the trolley/panel combinations (#3, 4, 5, 10, etc., as necessary) until they are all installed.

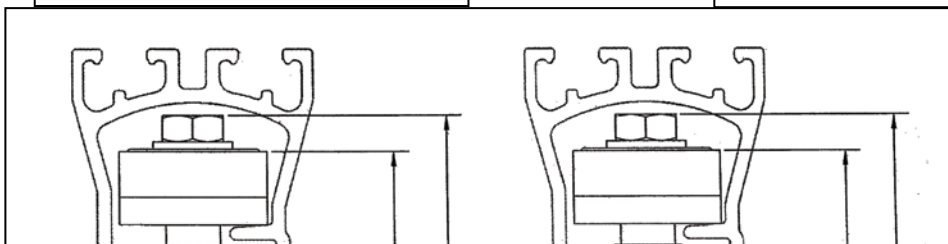
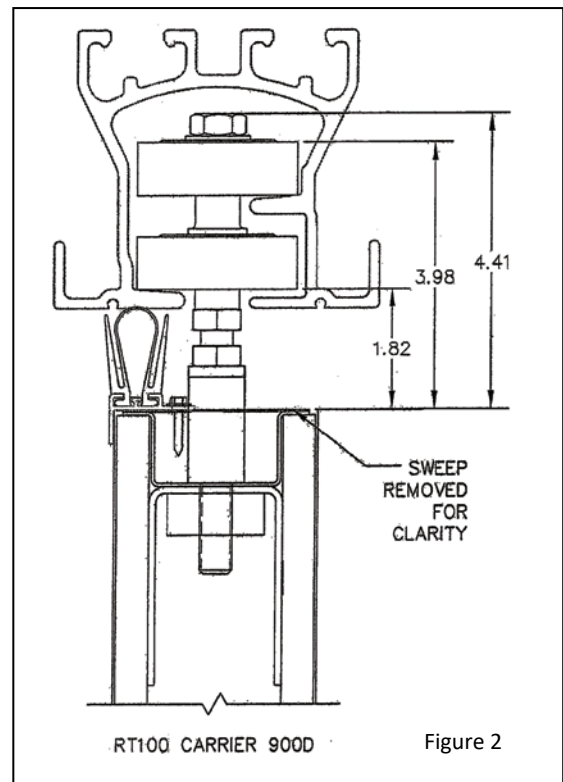
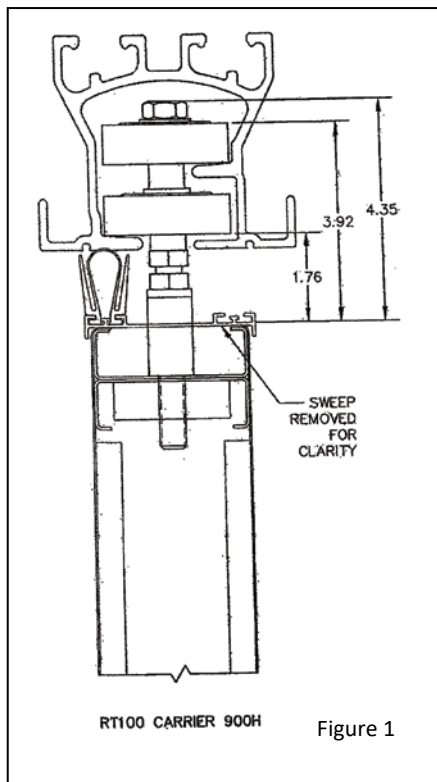
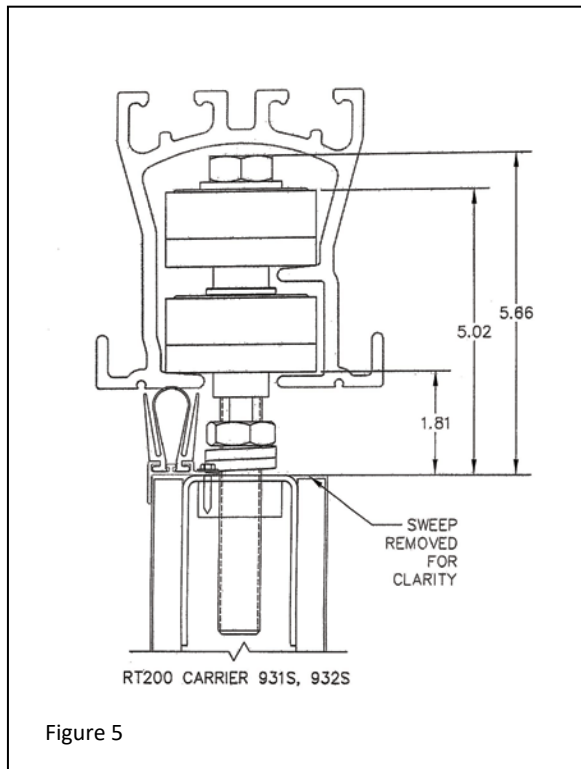


Figure 4

Figure 3

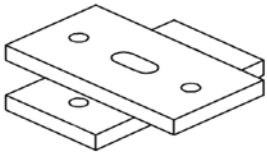


The RT Trolley preset dimension will vary depending on the panel type. See figures 1 thru 5. The approximate preset dimension for the RT Trolley's is 1.76".

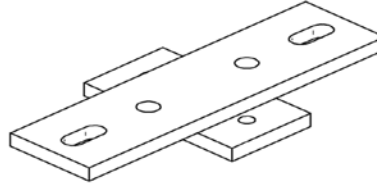
Figure 5

## Step 6: Hardware Piece Parts

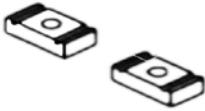
---



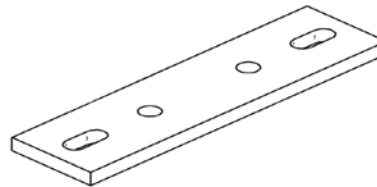
**109903-001**  
**2.5 GAGE REMOVABLE**  
**HANGER BRACKET**



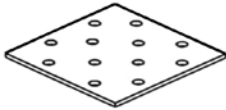
**109974-001**  
**5.5 GAGE REMOVABLE**  
**HANGER BRACKET**



**109896-001**  
**.38" STRUT NUT**



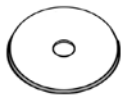
**109973-001**  
**5.5 GAGE HANGER**  
**BRACKET**



**109902-001**  
**SPLICE PLATE**



**109976-001**  
**HWH BOLT**



**109895-001**  
**FENDER WASHER**  
**2" O.D x .09 thk**



**101579-001**  
**.156d SPRING**  
**ROLL PIN**



**100637- 00x**  
**Threaded Rod**


***IDENTIFICATION FOR THE DISTRIBUTOR***

This label with the appropriate numbers applied is installed on the top retainer between the sweeps of the panel assembly. It can help you later, if this partition should ever need repairs.

<b>ORDER #</b> _____	<b>LEAD</b>
<b>WALL:</b> _____	→
<b>PANEL #</b> _____	<b>EDGE</b>

**IDENTIFICATION FOR THE END USER**

This label is installed on the trail edge of the number one panel on your partition.

	<b>FOR SERVICE AND PREVENTATIVE MAINTENANCE CALL 1-888-FX WALLS FOR YOUR AUTHORIZED SERVICE CENTER</b>
	<b>JOB #</b> _____



215 West New Road  
Greenfield, IN 46140

Toll Free: 800.869.9685

email: [info@modernfold.com](mailto:info@modernfold.com)

[www.modernfold.com](http://www.modernfold.com)