

Acousti-Clear Motorized[®]

Addendum I
Wiring Instructions

Installation Manual

Acousti-Clear Motorized® Electrical Installation and Operation Manual

All installations should be completed by trained professionals and be performed per all local building and electrical codes. The Acousti-Clear Motorized® product is intended for Commercial Use.

IMPORTANT SAFETY INSTRUCTIONS

When using an electrical furnishing, basic precautions should always be followed, including the following.

Read all instructions before using this furnishing.

WARNING – To reduce the risk of burns, fire, electric shock, or injury to persons:

1. Disconnect from electrical power before putting on or taking off parts.
2. Close supervision is necessary when this furnishing is used near children, invalids, or disabled persons.
3. Use this furnishing only for its intended use as described in these instructions.
4. Do not use outdoors.

SAVE THESE INSTRUCTIONS

IMPORTANT CONSIGNES DE SÉCURITÉ

Lorsque vous utilisez une fourniture électrique, base précautions devraient toujours être suivies, notamment les suivantes.

Lire toutes les instructions avant d'utiliser ce ameublement.

ATTENTION – Pour réduire le risque de brûlures, incendie, choc électrique, ou de blessures de personnes:

1. Se déconnecter d'alimentation électrique avant mettre ou décoller de pièces.
2. Supervision étroite est nécessaire ce ameublement est utilisé près des enfants, des invalides ou des personnes handicapées.
3. Utilisez cette remise uniquement pour son but utilisation comme décrit dans ces instructions.
4. N'utilisez pas à l'extérieur.

ENREGISTRER CES INSTRUCTIONS

POWER REQUIREMENTS

SEALS: 41 VDC UL CLASS 2 POWER SUPPLY (100w Max)

AWA, BLINDS, & SHADES: 24 VDC UL CLASS 2 POWER SUPPLY (100w Max)

PDLC GLASS: 55 VAC Max

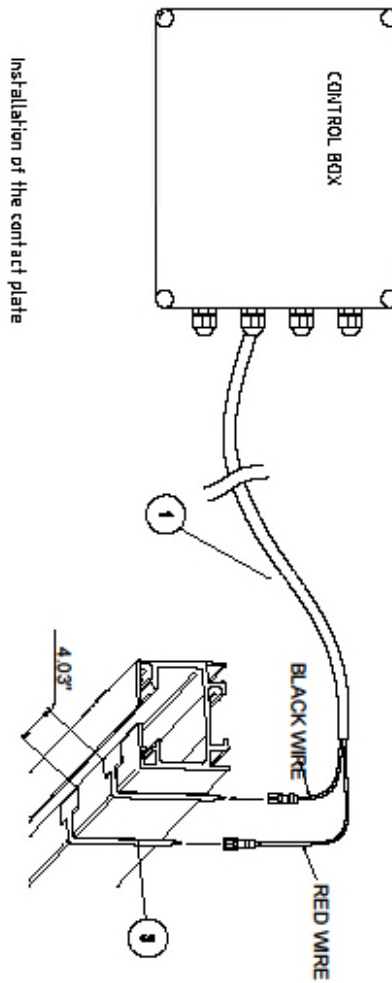
ELECTRICAL RATINGS:

Model	Voltage, Vdc	Current, A	Power, Watts
Intermediate Panel, Single Passdoor Panel DT, Double Leaf Passdoor Panel DTZ	41	1.04	44
Glazed Intermediate Panel w/o Blinds or Shades	41	1.04	44
Glazed Intermediate Panel w/ Blinds powered by Somfy motor LW25-B83	41 – panel seals 24 - blinds	1.04 0.25	44 6
Glazed Intermediate Panel w/ Blinds powered by Somfy motor LT 28-B73	41 – panel seals 24 - blinds	1.04 0.385	44 8.7
Glazed Intermediate Panel w/ Shades powered by Somfy motor Sonesse 30 RTS	41 – panel seals 24 - shades	1.04 0.4	44 9.5
Glazed Intermediate Panel w/ PDLC Glass	41 VDC – panel seals	1.04	44
	Max 55 VAC - PDLC Glass	Max 0.46	max 6 W/m2
AWA	24	0.88	22
TE	41	1.04	44

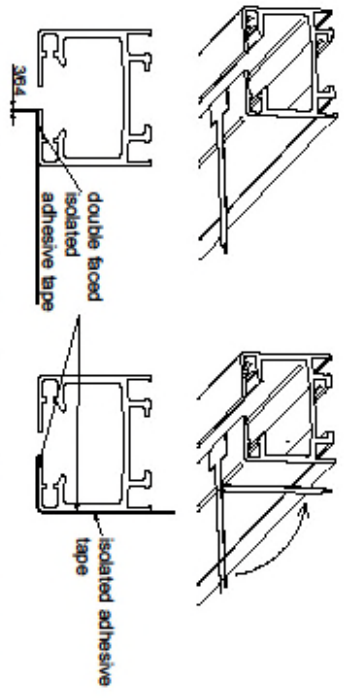
Application Limits

Maximum # of panels	No more than 60 panels may be operated from one power supply. If the layout requires more than 60 panels from one lead jamb, a second power supply must be used to power the seals on panels from 61 – 120.
Maximum # of blinds	Blind circuits may not consume more than 100 watts of power. <ul style="list-style-type: none"> • Using the Somfy LW25-B83 blind motor, no more than 6 blinds may be powered from one power supply. If the layout demands more than 6 blinds, a second power supply must be used. • Using the Somfy LT28-B73 blind motor, no more than 11 blinds may be powered from one power supply. If the layout demands more than 11 blinds, a second power supply must be used.
Maximum # of shades	Shade circuits may not consume more than 100 watts of power. <ul style="list-style-type: none"> • Using the Somfy Sonesse 30RTS shade motor, no more than 10 shades may be powered from one power supply. If the layout demands more than 10 shades, a second power supply must be used.
Maximum # of panels w/ PDLC GLASS	A single power supply may power panels 1-4 and will be added for panels 5-9 and so on up to 16 panels.
Track Contacts	In cases where the layout requires more panels, blinds, or shades than can be powered with one power supply, track contacts can be added to the system. Track contacts can also be used when the geometry of the layout requires panels to form a “T” intersection. These track contacts are adhesively bonded to the track in the location shown by the job specific shop drawing.
Track Contacts w/ PDLC GLASS	2 provided per 4 panels with PDLC glass is installed in a partition run. These track contacts are adhesively bonded to the track in the location shown by the job specific shop drawing.

TRACK CONTACT INSTALLATION



Installation of the contact plate

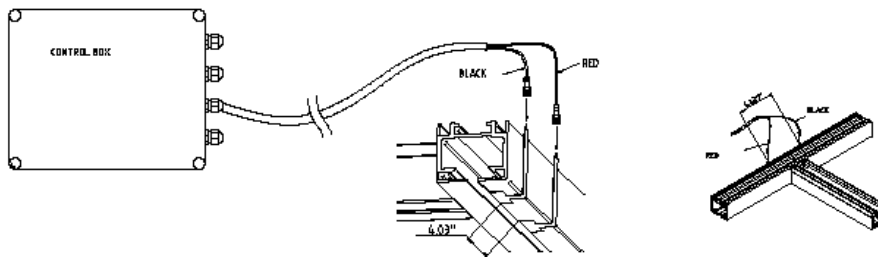


- 1) Remove the protection film and place the contact plate with 3/84 distance to the edge of the track. Press the face to the track strongly.
- 2) Press the contact plate below the track strongly and form it to the outer edge of the track simultaneously.

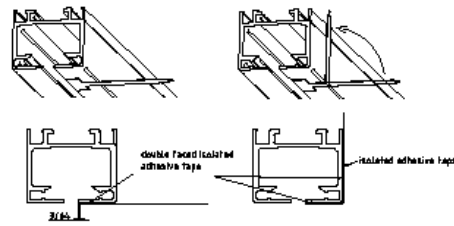
NOTE:

- 1. PUSHER ASS'Y AND CABLE EXTENSIONS TO BE INSTALLED IN 11TH PANEL, WITH BLINDS, AWAY FROM THE LEAD JAMB.
- 2. TRACK CONTACTS TO BE INSTALLED ABOVE 11TH PANEL W/ BLINDS AND 10TH PANEL W/ SHADES. BOTH CONTACTS 3.25" TO THE CENTER OF THE CONTACT, OFF THE CENTERLINE OF THE PANEL.
- 3. TRACK CONTACTS TO BE INSTALLED ABOVE THE LEFT SIDE OF THE PANEL.

WIRING DIAGRAM – MOVED T INTERSECTION
 111442



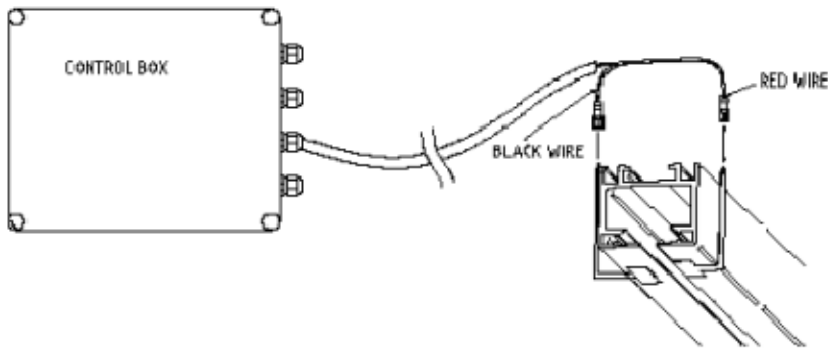
Installation of the contact plate



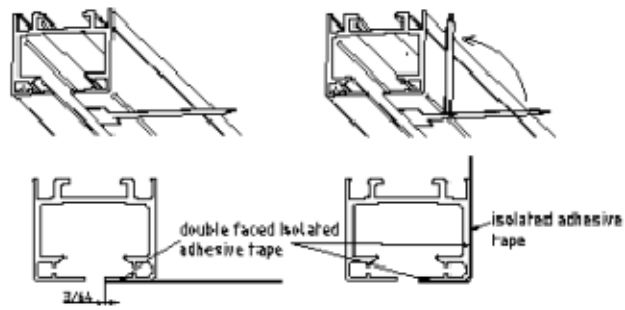
1) Remove the protection film and place the contact plate with 3/64" distance to the edge of the track. Press the face to the track strongly.
 2) Press the contact plate below the track strongly and press it to the outer edge of the track simultaneously.

- NOTE:
1. TRACK CONTACTS TO BE INSTALLED ABOVE T-INTERSECTION.
 BOTH CONTACTS 3.25" TO THE CENTER OF THE CONTACT, OFF THE CENTERLINE OF THE PANEL.
 2. TRACK CONTACTS TO BE INSTALLED OPPOSITE OF T-INTERSECTION.
 3. SEPARATE CONTROL BOX REQUIRED FOR T-INTERSECTION WALL.

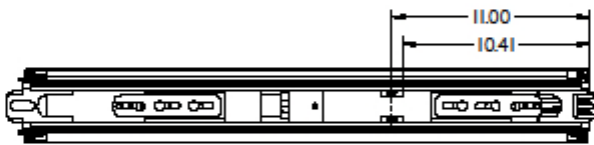
WIRING DIAGRAM - Acousti-Clear w/ PDLC Glass



PDLC GLASS TRACK CONTACT INSTALLATION



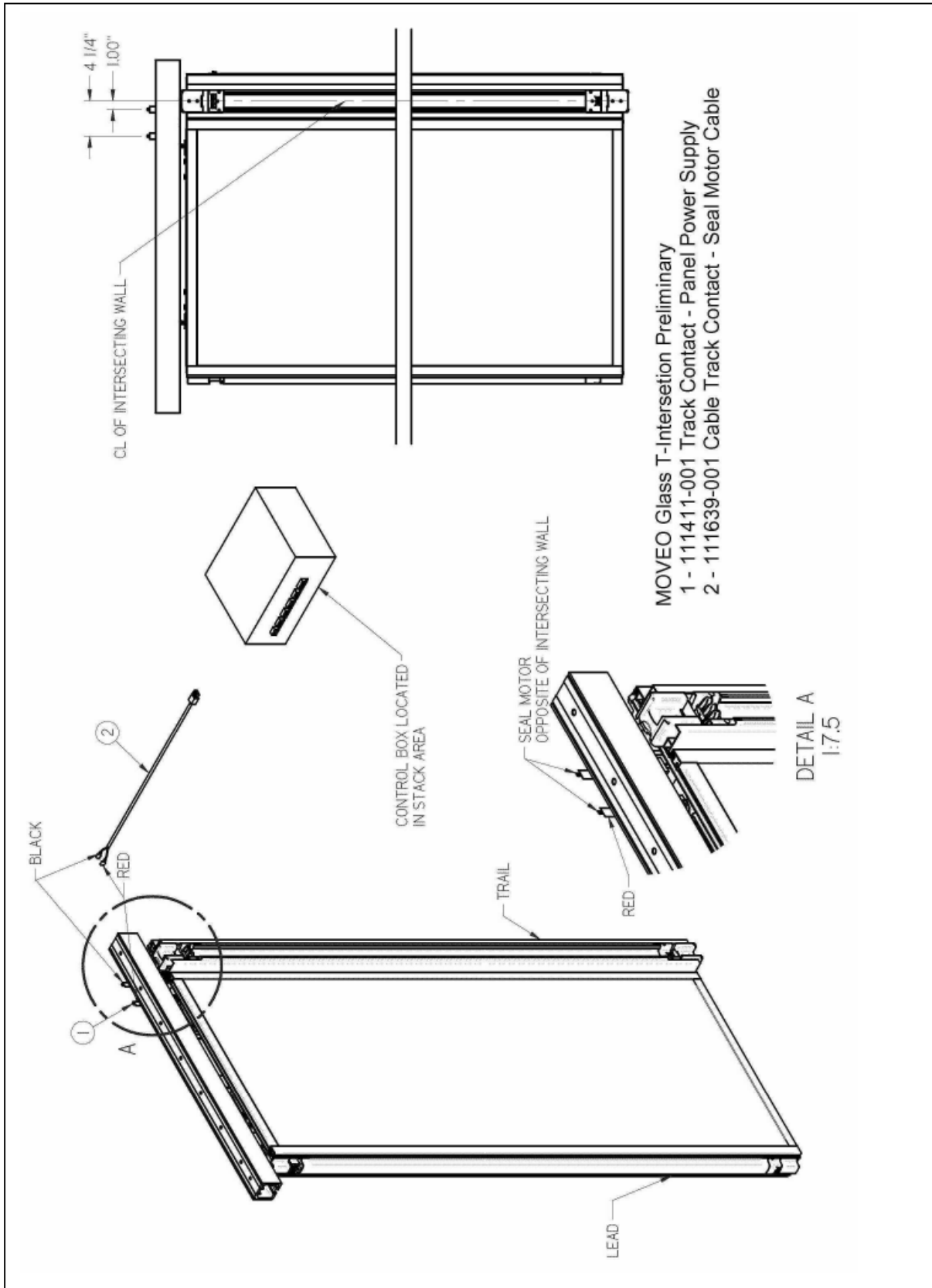
- 1) Remove the protection film and place the contact plate with 3/64 distance to the edge of the track. Press the face to the track strongly.
- 2) Press the contact plate below the track strongly and form it to the outer edge of the track simultaneously

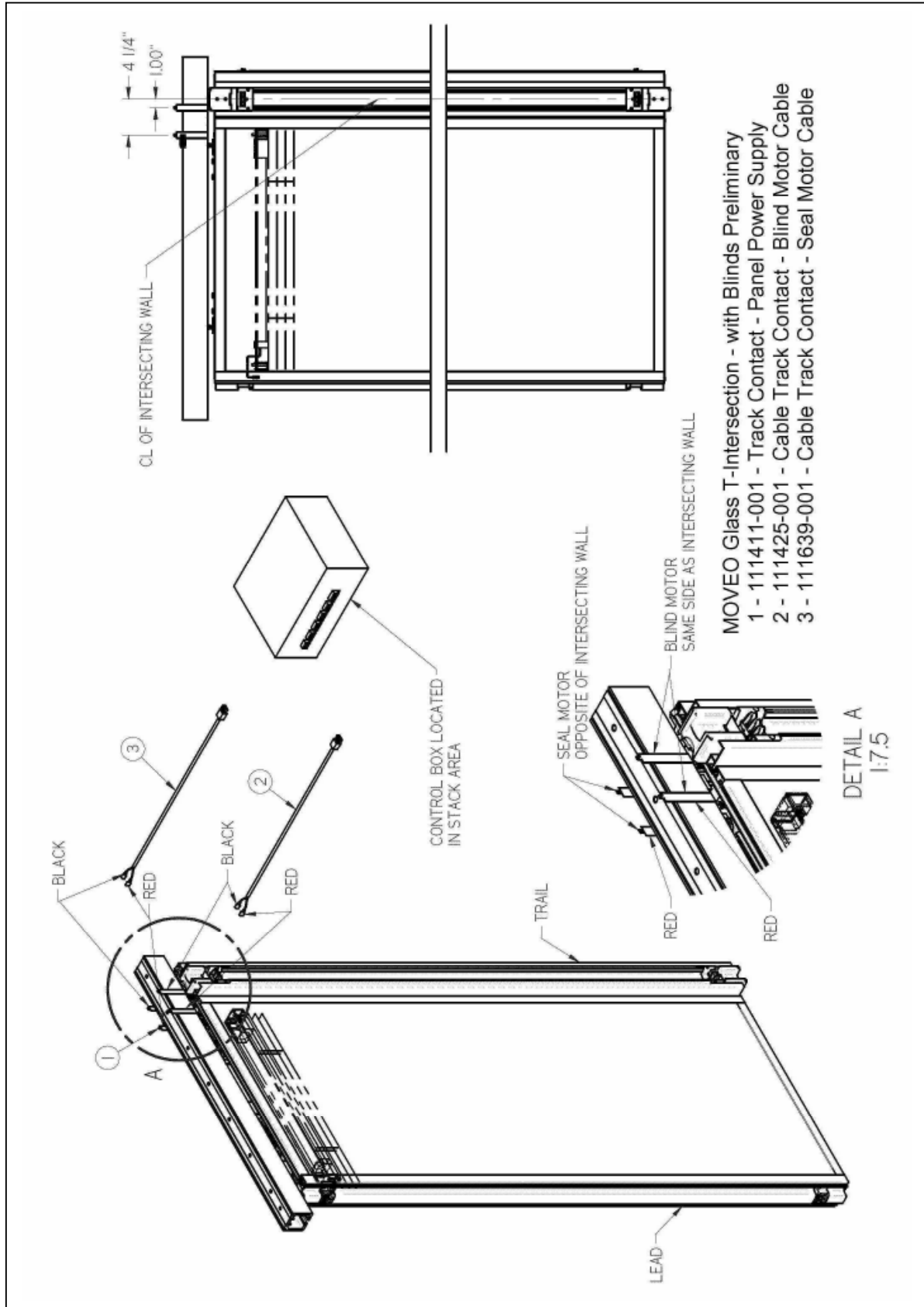


TRAIL PDLC GLASS PANEL

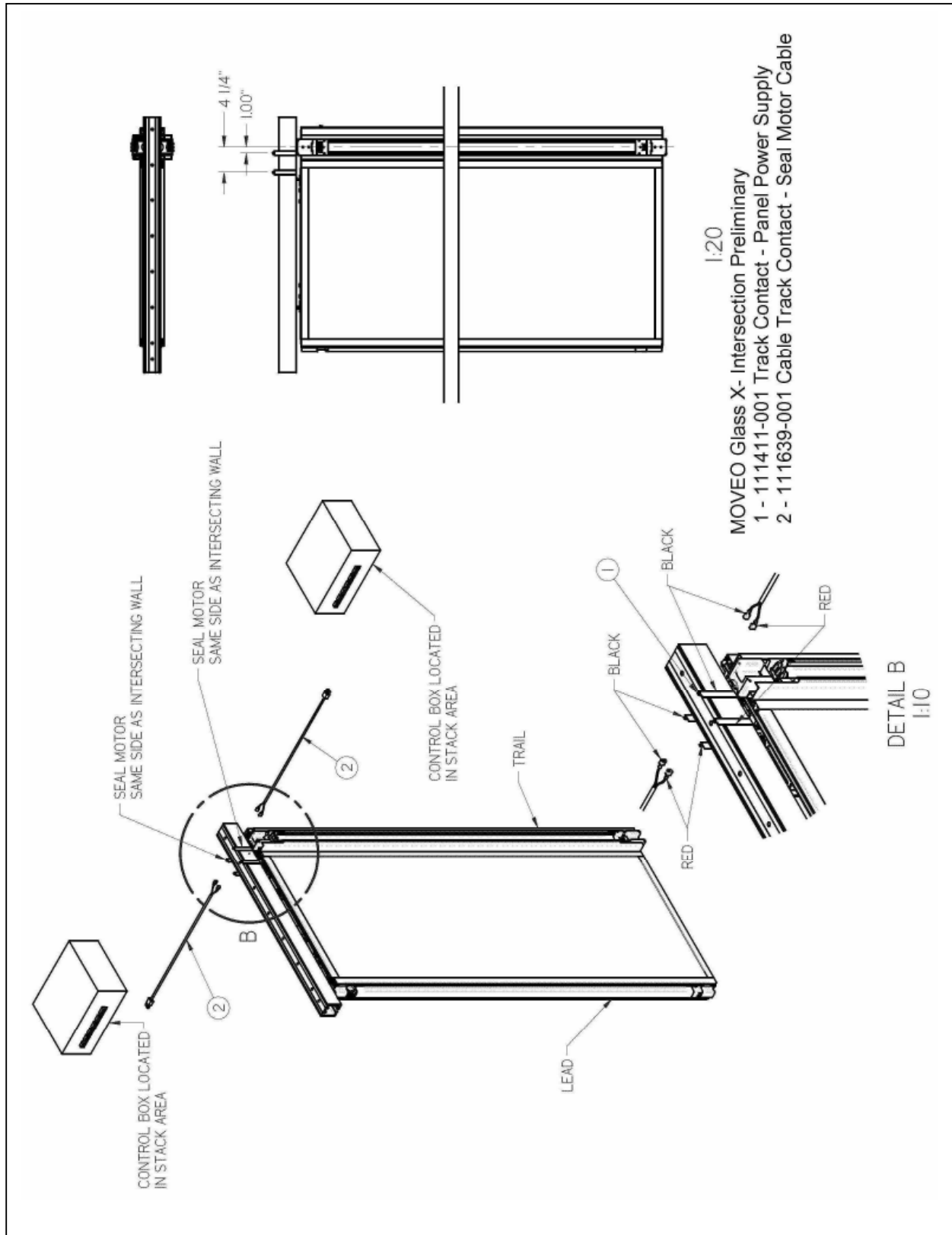
Notes

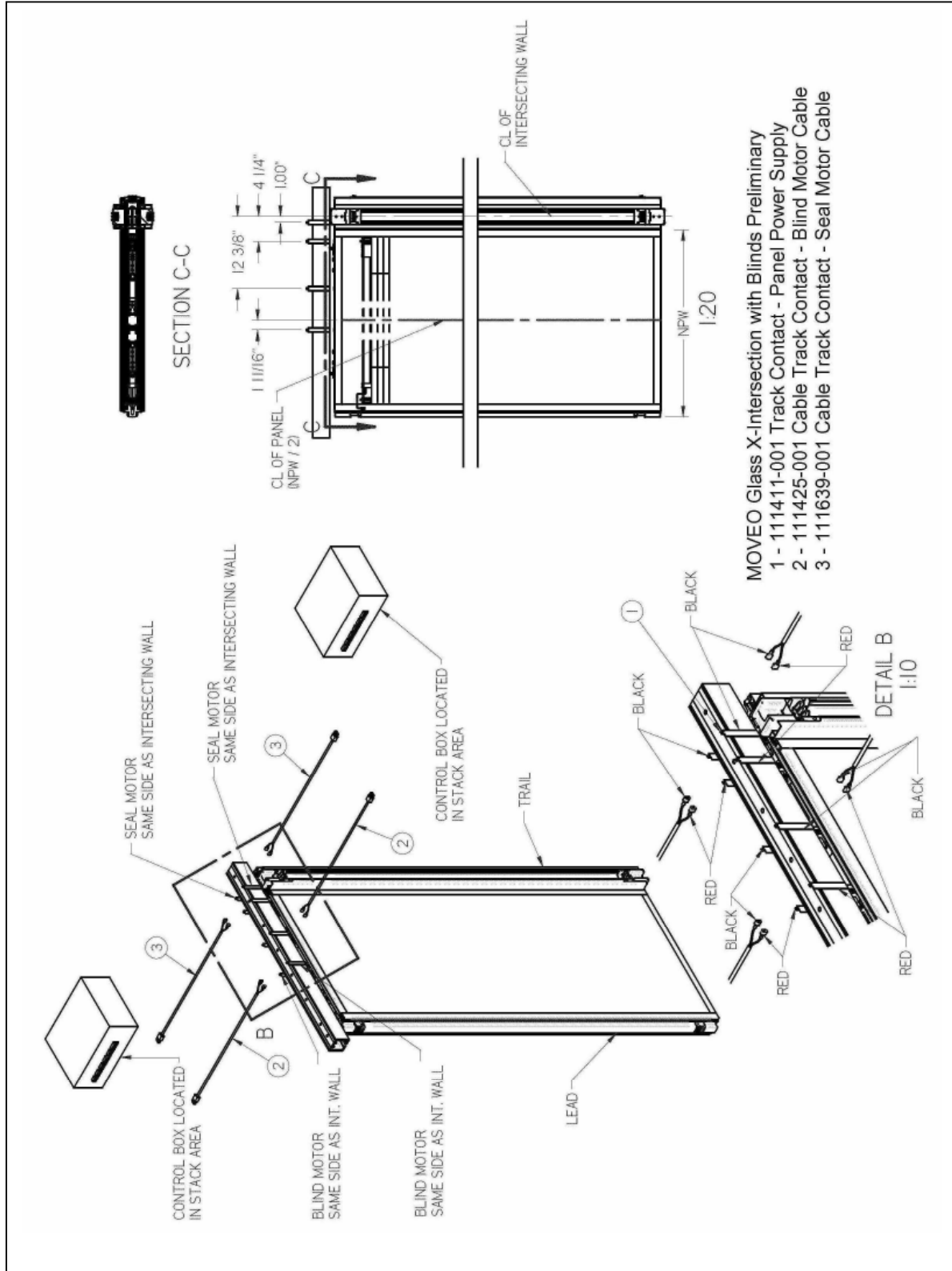
1. Track contacts to be installed above panels 1,5,9,13 for trail panels with PDLC glass both contacts should be located 11.00" O/C from the trail panel edge



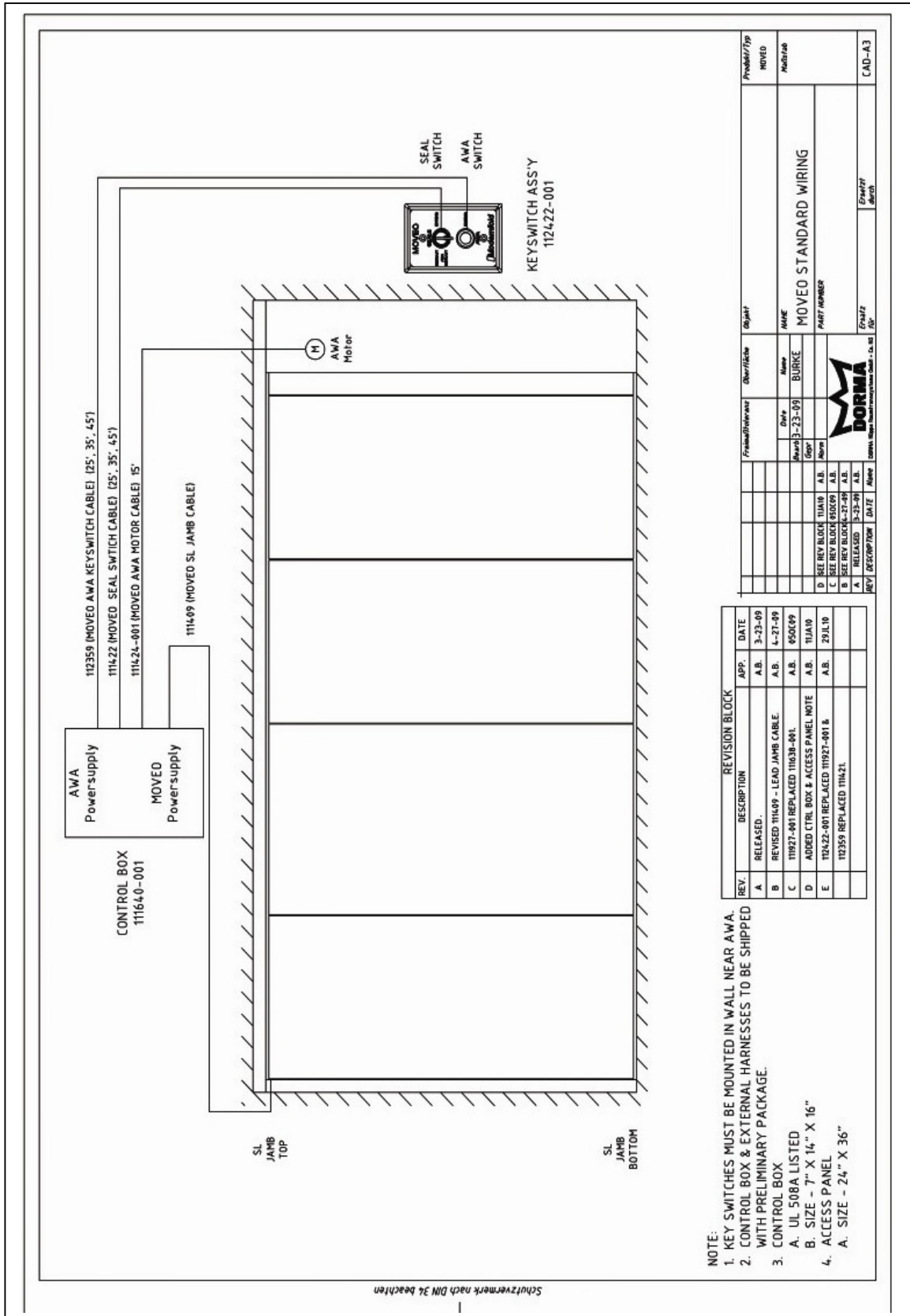


**Shades same as Blinds





**Shades same as Blinds



NOTE:
 1. KEY SWITCHES MUST BE MOUNTED IN WALL NEAR AWA.
 2. CONTROL BOX & EXTERNAL HARNESSSES TO BE SHIPPED WITH PRELIMINARY PACKAGE.
 3. CONTROL BOX
 A. UL 508A LISTED
 B. SIZE - 7" X 14" X 16"
 4. ACCESS PANEL
 A. SIZE - 24" X 36"

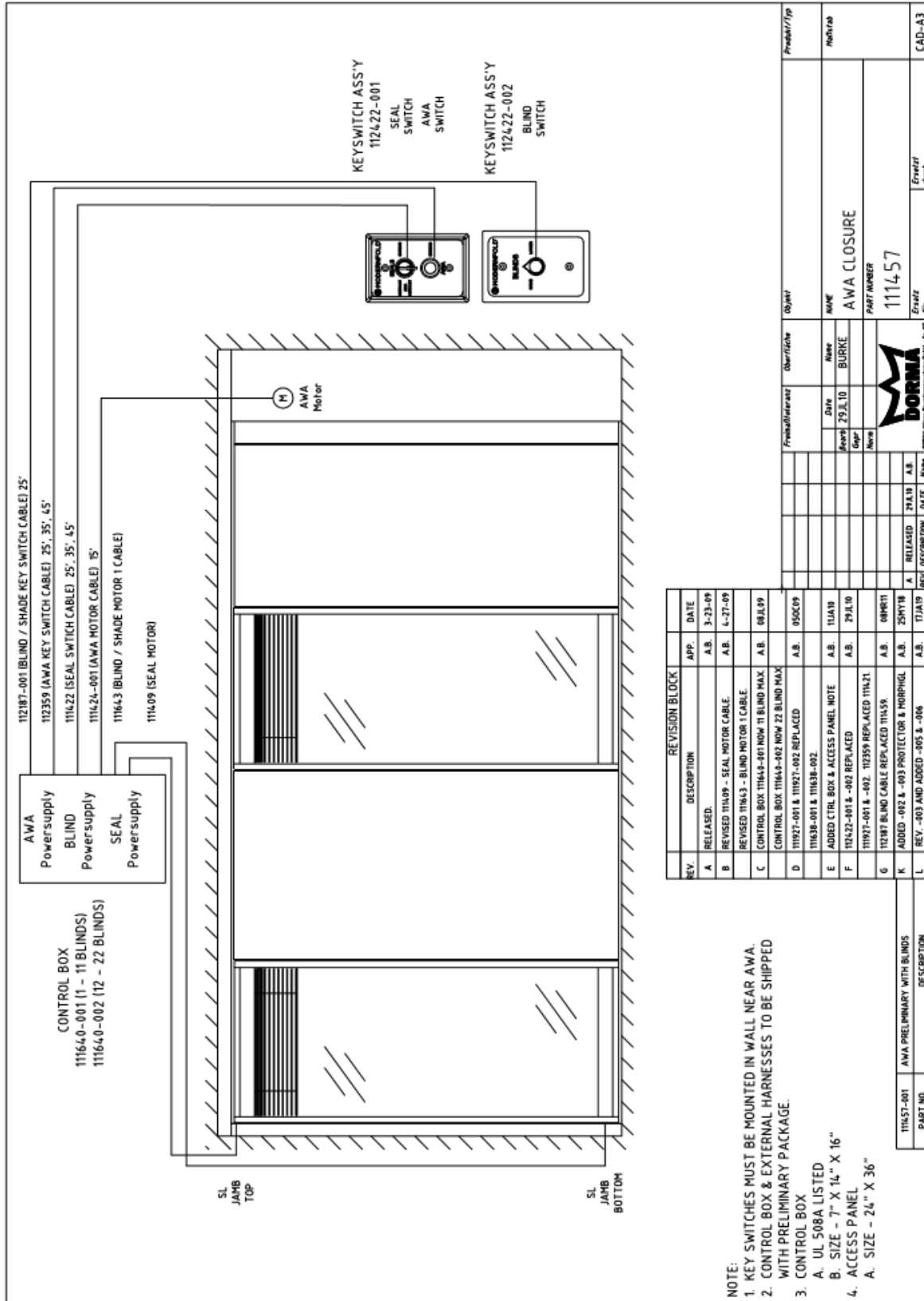
REV.	DESCRIPTION	APP.	DATE
A	RELEASED.	A.B.	3-23-09
B	REVISED 111409 - LEAD JAMB CABLE.	A.B.	4-27-09
C	111927-001 REPLACED 111638-001.	A.B.	050609
D	ADDED CTRL BOX & ACCESS PANEL NOTE	A.B.	11JAN10
E	112422-001 REPLACED 111927-001 & 112359 REPLACED 111421.	A.B.	29JUN10

REV.	DESCRIPTION	DATE	APP.
D	SEE REV BLOCK 11JAN10	A.B.	
C	SEE REV BLOCK 050609	A.B.	
B	SEE REV BLOCK 04-27-09	A.B.	
A	RELEASED	3-23-09	A.B.

Product/Type	Model/Part
MOVED	MOVED

Manufacturer	Quantity	Part/Item
Blurke	1	112422-001

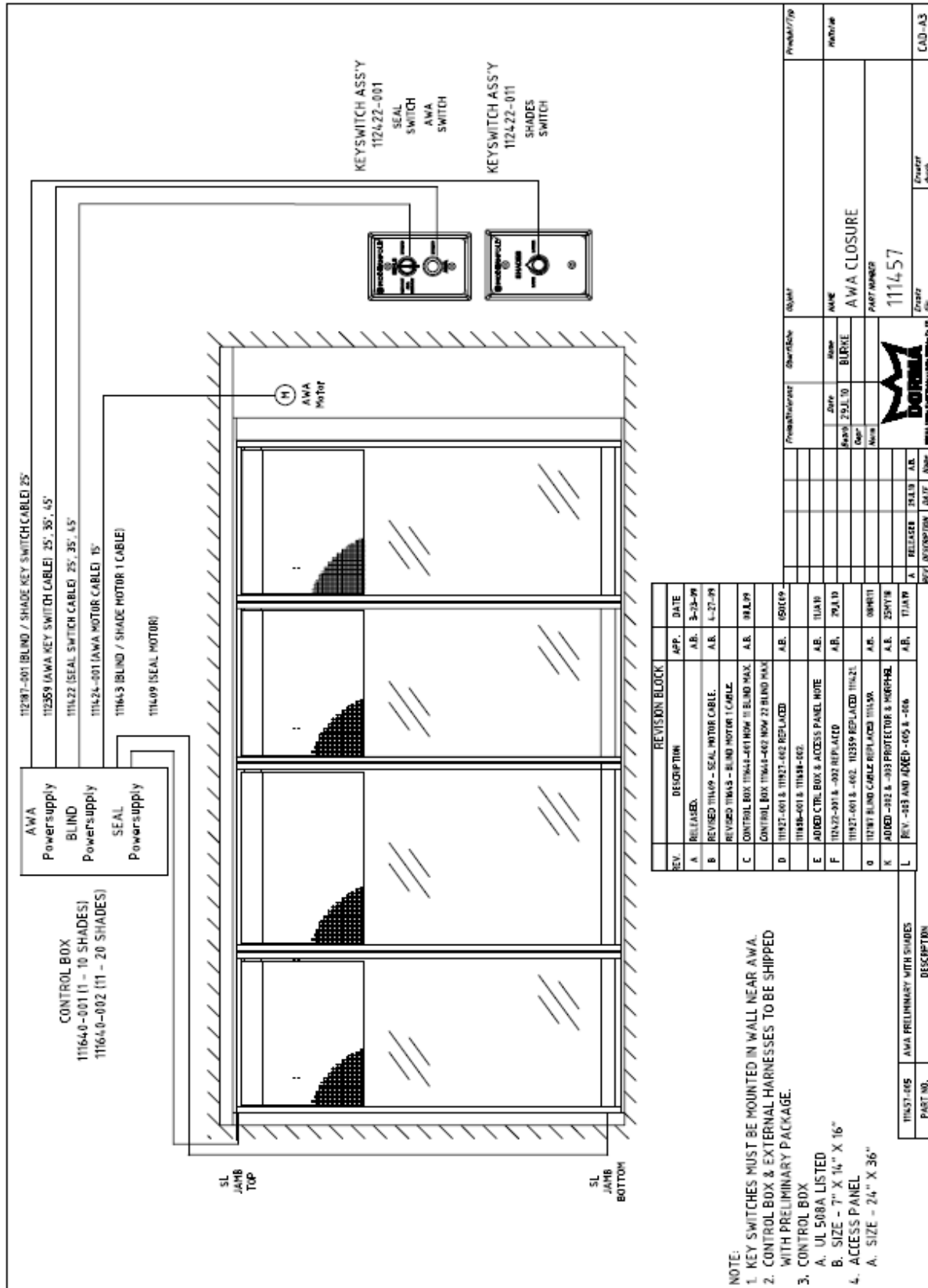
REV.	DESCRIPTION	DATE	APP.
D	SEE REV BLOCK 11JAN10	A.B.	
C	SEE REV BLOCK 050609	A.B.	
B	SEE REV BLOCK 04-27-09	A.B.	
A	RELEASED	3-23-09	A.B.



- NOTE:
- KEY SWITCHES MUST BE MOUNTED IN WALL NEAR AWA.
 - CONTROL BOX & EXTERNAL HARNESSSES TO BE SHIPPED WITH PRELIMINARY PACKAGE.
 - CONTROL BOX
 - UL 508A LISTED
 - SIZE - 7" X 14" X 16"
 - ACCESS PANEL
 - SIZE - 24" X 36"

REV.	DESCRIPTION	APP.	DATE
A	RELEASED.	A.B.	3-23-09
B	REVISED 1114.09 - SEAL MOTOR CABLE.	A.B.	6-27-09
C	CONTROL BOX 11164.3 - BLIND MOTOR 1 CABLE.	A.B.	08/14/09
D	CONTROL BOX 11164.3-002 NOW 11 BLIND MAX	A.B.	08/14/09
E	CONTROL BOX 11164.3-002 NOW 22 BLIND MAX	A.B.	08/14/09
F	111927-001 & 111927-002 REPLACED	A.B.	05/05/09
G	111638-001 & 111638-002	A.B.	05/05/09
H	ADDED CTRL BOX & ACCESS PANEL NOTE	A.B.	11/14/10
I	111422-001 B - 002 REPLACED	A.B.	29/11/10
J	111927-001 A - 002. 112359 REPLACED 1114.21	A.B.	08/07/11
K	110187 BLIND CABLE REPLACED 1114.21	A.B.	08/07/11
L	AWA PRELIMINARY WITH BLINDS	A.B.	25/07/10
M	AWA PRELIMINARY WITH BLINDS	A.B.	17/10/10
N	AWA PRELIMINARY WITH BLINDS	A.B.	05/05/09

REV.	DESCRIPTION	APP.	DATE
A	RELEASED.	A.B.	3-23-09
B	REVISED 1114.09 - SEAL MOTOR CABLE.	A.B.	6-27-09
C	CONTROL BOX 11164.3 - BLIND MOTOR 1 CABLE.	A.B.	08/14/09
D	CONTROL BOX 11164.3-002 NOW 11 BLIND MAX	A.B.	08/14/09
E	CONTROL BOX 11164.3-002 NOW 22 BLIND MAX	A.B.	08/14/09
F	111927-001 & 111927-002 REPLACED	A.B.	05/05/09
G	111638-001 & 111638-002	A.B.	05/05/09
H	ADDED CTRL BOX & ACCESS PANEL NOTE	A.B.	11/14/10
I	111422-001 B - 002 REPLACED	A.B.	29/11/10
J	111927-001 A - 002. 112359 REPLACED 1114.21	A.B.	08/07/11
K	110187 BLIND CABLE REPLACED 1114.21	A.B.	08/07/11
L	AWA PRELIMINARY WITH BLINDS	A.B.	25/07/10
M	AWA PRELIMINARY WITH BLINDS	A.B.	17/10/10
N	AWA PRELIMINARY WITH BLINDS	A.B.	05/05/09



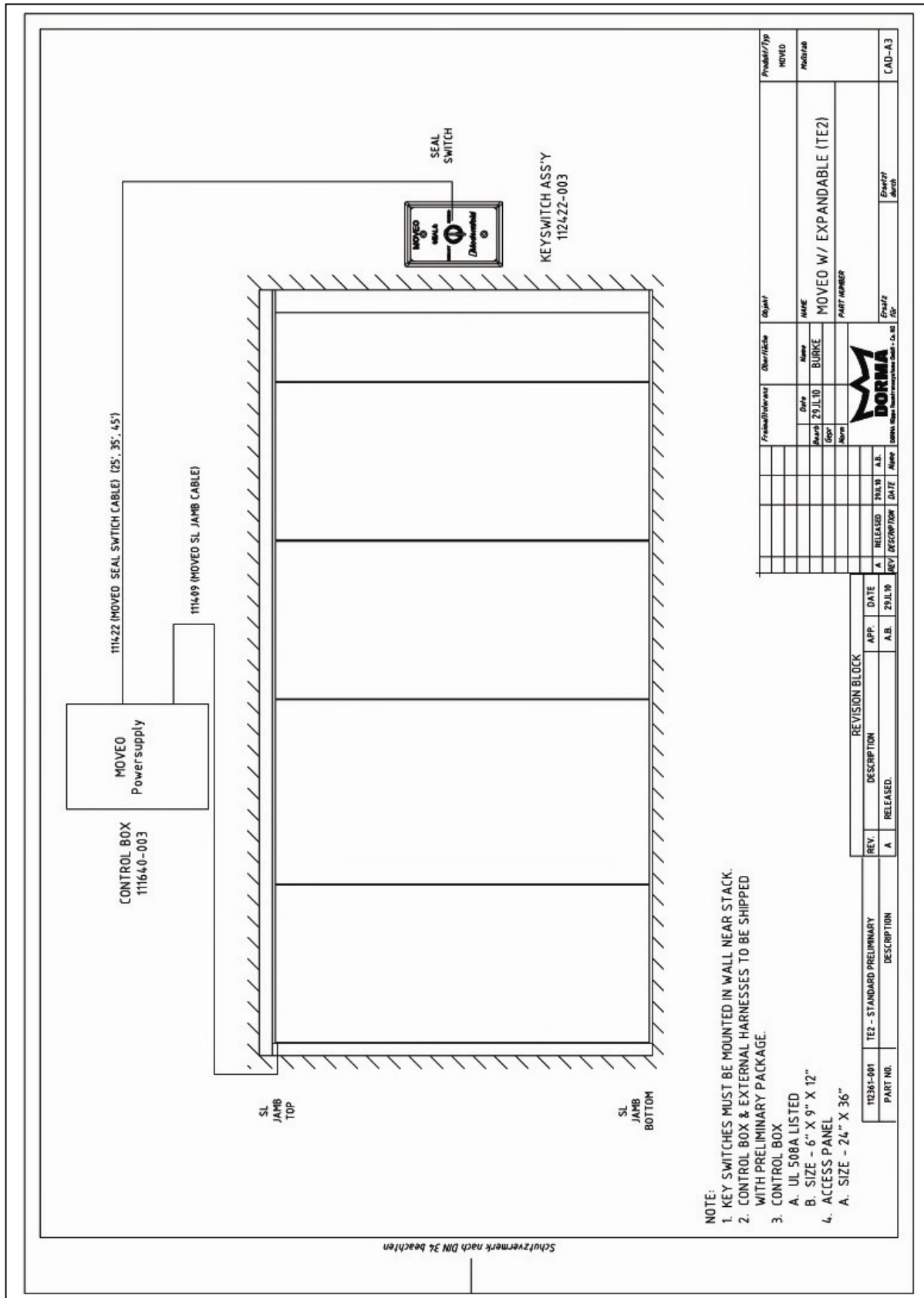
REV.	DESCRIPTION	APP.	DATE
A	RELEASED	A.B.	3-23-09
B	REVISED 111609 - SEAL MOTOR CABLE	A.B.	4-27-09
C	REVISED 111643 - BLIND MOTOR 1 CABLE	A.B.	10-11-09
D	CONTROL BOX 111644-001 NOW IS BLIND MAX. CONTROL BOX 111645-002 NOW IS BLIND MAX.	A.B.	05/01/10
E	111627-001 & 111627-002 REPLACED	A.B.	05/01/10
F	111627-001 & 111627-002 REPLACED	A.B.	05/01/10
G	111627-001 & 111627-002 REPLACED	A.B.	05/01/10
H	111627-001 & 111627-002 REPLACED	A.B.	05/01/10
I	111627-001 & 111627-002 REPLACED	A.B.	05/01/10
J	111627-001 & 111627-002 REPLACED	A.B.	05/01/10
K	111627-001 & 111627-002 REPLACED	A.B.	05/01/10
L	111627-001 & 111627-002 REPLACED	A.B.	05/01/10

NOTE:
 1. KEY SWITCHES MUST BE MOUNTED IN WALL NEAR AWA.
 2. CONTROL BOX & EXTERNAL HARNESSSES TO BE SHIPPED WITH PRELIMINARY PACKAGE.
 3. CONTROL BOX
 A. UL 508A LISTED
 B. SIZE - 7" X 16" X 16"
 4. ACCESS PANEL
 A. SIZE - 24" X 36"

REV.	DESCRIPTION	APP.	DATE
A	RELEASED	A.B.	3-23-09
B	REVISED 111609 - SEAL MOTOR CABLE	A.B.	4-27-09
C	REVISED 111643 - BLIND MOTOR 1 CABLE	A.B.	10-11-09
D	CONTROL BOX 111644-001 NOW IS BLIND MAX. CONTROL BOX 111645-002 NOW IS BLIND MAX.	A.B.	05/01/10
E	111627-001 & 111627-002 REPLACED	A.B.	05/01/10
F	111627-001 & 111627-002 REPLACED	A.B.	05/01/10
G	111627-001 & 111627-002 REPLACED	A.B.	05/01/10
H	111627-001 & 111627-002 REPLACED	A.B.	05/01/10
I	111627-001 & 111627-002 REPLACED	A.B.	05/01/10
J	111627-001 & 111627-002 REPLACED	A.B.	05/01/10
K	111627-001 & 111627-002 REPLACED	A.B.	05/01/10
L	111627-001 & 111627-002 REPLACED	A.B.	05/01/10

REV.	DESCRIPTION	APP.	DATE
A	RELEASED	A.B.	3-23-09
B	REVISED 111609 - SEAL MOTOR CABLE	A.B.	4-27-09
C	REVISED 111643 - BLIND MOTOR 1 CABLE	A.B.	10-11-09
D	CONTROL BOX 111644-001 NOW IS BLIND MAX. CONTROL BOX 111645-002 NOW IS BLIND MAX.	A.B.	05/01/10
E	111627-001 & 111627-002 REPLACED	A.B.	05/01/10
F	111627-001 & 111627-002 REPLACED	A.B.	05/01/10
G	111627-001 & 111627-002 REPLACED	A.B.	05/01/10
H	111627-001 & 111627-002 REPLACED	A.B.	05/01/10
I	111627-001 & 111627-002 REPLACED	A.B.	05/01/10
J	111627-001 & 111627-002 REPLACED	A.B.	05/01/10
K	111627-001 & 111627-002 REPLACED	A.B.	05/01/10
L	111627-001 & 111627-002 REPLACED	A.B.	05/01/10

REV.	DESCRIPTION	APP.	DATE
A	RELEASED	A.B.	3-23-09
B	REVISED 111609 - SEAL MOTOR CABLE	A.B.	4-27-09
C	REVISED 111643 - BLIND MOTOR 1 CABLE	A.B.	10-11-09
D	CONTROL BOX 111644-001 NOW IS BLIND MAX. CONTROL BOX 111645-002 NOW IS BLIND MAX.	A.B.	05/01/10
E	111627-001 & 111627-002 REPLACED	A.B.	05/01/10
F	111627-001 & 111627-002 REPLACED	A.B.	05/01/10
G	111627-001 & 111627-002 REPLACED	A.B.	05/01/10
H	111627-001 & 111627-002 REPLACED	A.B.	05/01/10
I	111627-001 & 111627-002 REPLACED	A.B.	05/01/10
J	111627-001 & 111627-002 REPLACED	A.B.	05/01/10
K	111627-001 & 111627-002 REPLACED	A.B.	05/01/10
L	111627-001 & 111627-002 REPLACED	A.B.	05/01/10



NOTE:
 1. KEY SWITCHES MUST BE MOUNTED IN WALL NEAR STACK.
 2. CONTROL BOX & EXTERNAL HARNESSSES TO BE SHIPPED WITH PRELIMINARY PACKAGE.
 3. CONTROL BOX
 A. UL 508A LISTED
 B. SIZE - 6" X 9" X 12"
 4. ACCESS PANEL
 A. SIZE - 24" X 36"

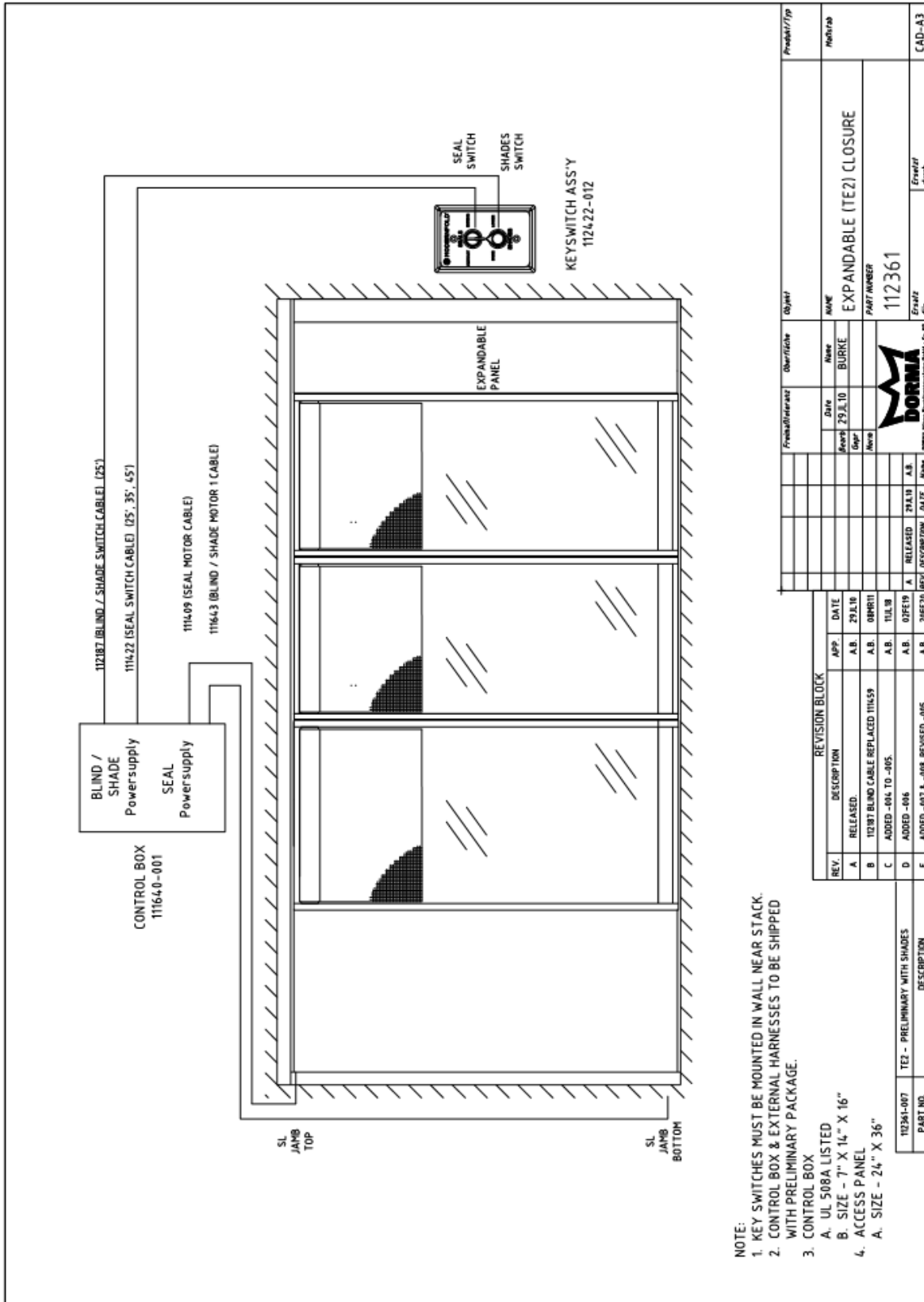
Frühjahr		Sommer		Herbst		Winter	
Monat	Jahr	Monat	Jahr	Monat	Jahr	Monat	Jahr
	2019		2019		2019		2019

Produkt/Typ	MOVED
Objekt	MOVEO W/ EXPANDABLE (TEZ)
Hersteller	BORMA
Objekt	MOVEO W/ EXPANDABLE (TEZ)
Produkt/Typ	CAD-A3

REV.	DESCRIPTION	APP.	DATE
A <td>RELEASED <td>A.B. <td>2019 </td></td></td>	RELEASED <td>A.B. <td>2019 </td></td>	A.B. <td>2019 </td>	2019

REV.	DESCRIPTION	APP.	DATE
A <td>RELEASED <td>A.B. <td>2019 </td></td></td>	RELEASED <td>A.B. <td>2019 </td></td>	A.B. <td>2019 </td>	2019

REV.	DESCRIPTION	APP.	DATE
A <td>RELEASED <td>A.B. <td>2019 </td></td></td>	RELEASED <td>A.B. <td>2019 </td></td>	A.B. <td>2019 </td>	2019



Schutzvermerk nach DIN 34 beachten

- NOTE:
- KEY SWITCHES MUST BE MOUNTED IN WALL NEAR STACK.
 - CONTROL BOX & EXTERNAL HARNESSSES TO BE SHIPPED WITH PRELIMINARY PACKAGE.
 - CONTROL BOX
 - UL 508A LISTED
 - SIZE - 7" X 14" X 16"
 - ACCESS PANEL
 - SIZE - 2 1/4" X 36"

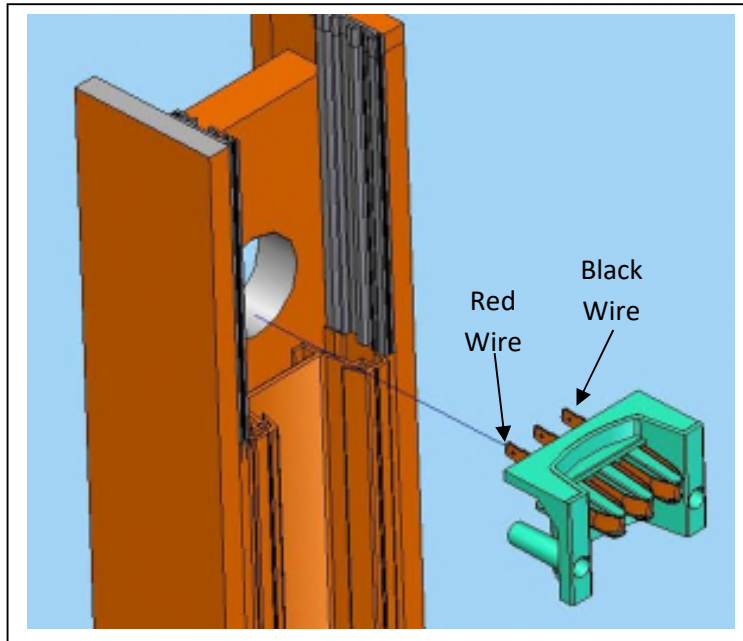
REV.	DESCRIPTION	APP.	DATE
A	RELEASED.	A.B.	29.JUL.10
B	112187 BLIND CABLE REPLACED 111639	A.B.	08.MRT.11
C	ADDED -04L TO -01S.	A.B.	11.LUL.10
D	ADDED -04S.	A.B.	07.FEB.10
E	ADDED -007 & -008 REVISED -01S	A.B.	20.FEB.10

REVISION BLOCK	DATE
RELEASED	29.JUL.10
112187 BLIND CABLE REPLACED 111639	08.MRT.11
ADDED -04L TO -01S.	11.LUL.10
ADDED -04S.	07.FEB.10
ADDED -007 & -008 REVISED -01S	20.FEB.10

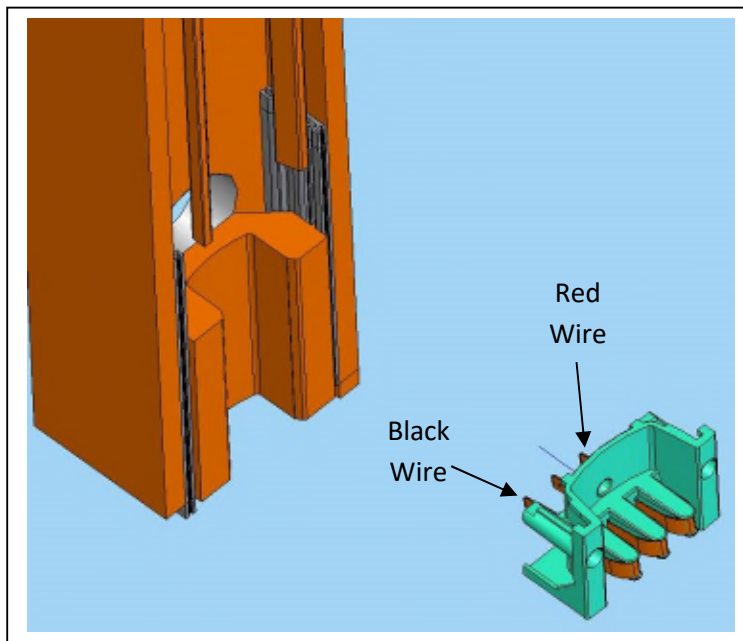
REV. / DATE	DESCRIPTION	PART NO.
TE2 - PRELIMINARY WITH SHADES		112361-007

Produkt/Typ	Objekt	Material
EXPANDABLE (TE2) CLOSURE		
PART NUMBER	112361	
Erstellt		Erweitert
		CAD-A3

Lead Jamb Seal Contact Cap Connection



Lead Jamb Blind & Shade Contact Cap Connection



Panel Design



1. Trolleys
2. Corner seals
3. Contact Caps
4. ComforTronic actuator
5. Seals

Acousti-Clear Motorized® partition panels are equipped as standard with automatic **ComforTronic**® actuators for extending and retracting the top and bottom seals.

The **ComforTronic**® system in modified form is also used for the top and bottom seals of pass doors.

Setting the Acousti-Clear Motorized® Floor Seals with AWA

Automatic top and bottom seals are standard for the Acousti-Clear Motorized® partition. First, turn the Seals key switch to the extend position. Move the first panel out of the stack position along the track until it is fully seated in the Jamb Wall Channel. Both the top and bottom seals will automatically engage. Continue moving each panel in sequence until all of the panels are in the run out of the stack position. As each panel engages the proceeding panel, both the top and bottom seals will automatically engage.

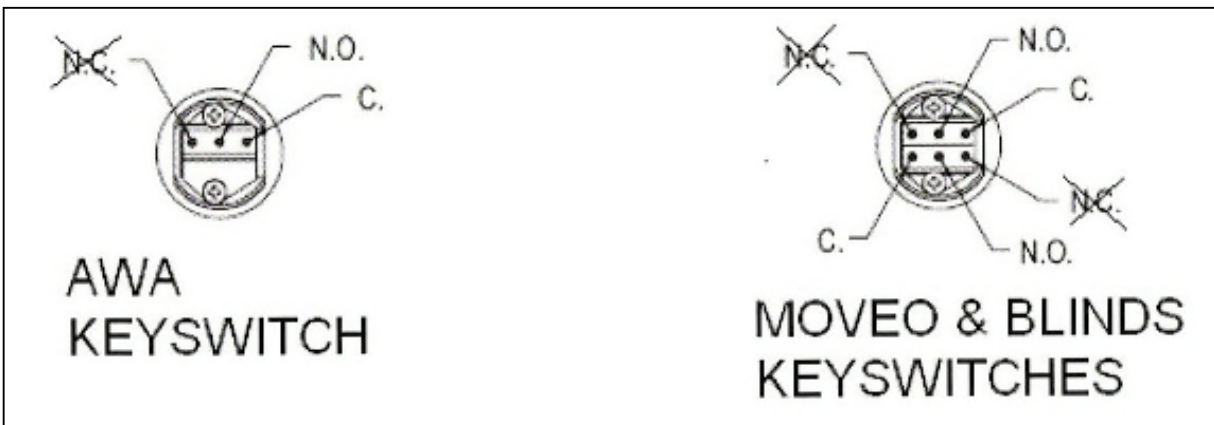
Note: There is a delay between the operation of the first and second seal.

Lastly, turn the AWA switch to extend. This will engage the Adjustable Wall Abutment

Note: AWA will only operate with Acousti-Clear Motorized® Seals key switch in the “Extend” position

Caution: Never operate the AWA switch unless all of the partition is in the opening and automatic seals have been set

Key Switch Diagrams



**** Shades same as Blinds**

Key Switch Location

The SEAL and AWA key switches are mounted to a common face plate and share a 2 ¾" deep single gang electrical box. The SEAL and AWA key switches must be installed near the trail end of the run and in a location that gives a clear view of the AWA. The key switches must be mounted within 25 feet of the control box.

The BLIND or SHADE switch is mounted to a dedicated face plate and is installed in a dedicated 2 ¾" deep single gang electrical box.

The PDLC switch is mounted to a dedicated face plate and is installed in a dedicated 2 ¾" deep single gang electrical box.

Setting the Acousti-Clear Motorized® Floor Seals with TE Closure

Automatic top and bottom seals are standard for the Acousti-Clear Motorized® partition. First, turn the Seals key switch to the extend position. Move the first panel out of the stack position along the track until it is fully seated in the Jamb Wall Channel. Both the top and bottom seals will automatically engage.

Continue moving each panel in sequence until all of the panels are in the run out of the stack position. As each panel engages the proceeding panel, both the top and bottom seals will automatically engage.

Note: TE will only operate with Acousti-Clear Motorized® Seals key switch in the “Extend” position. There is a normal delay between the operation of the top and bottom seal.

To extend the **TE** panel, move the **TE** panel from the stack onto the track snugly against the proceeding panel.

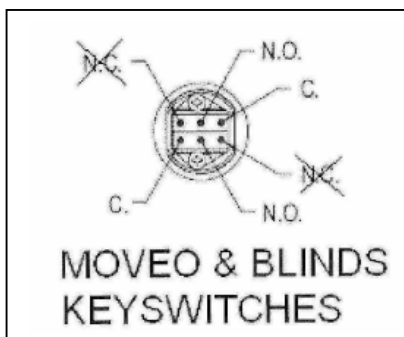
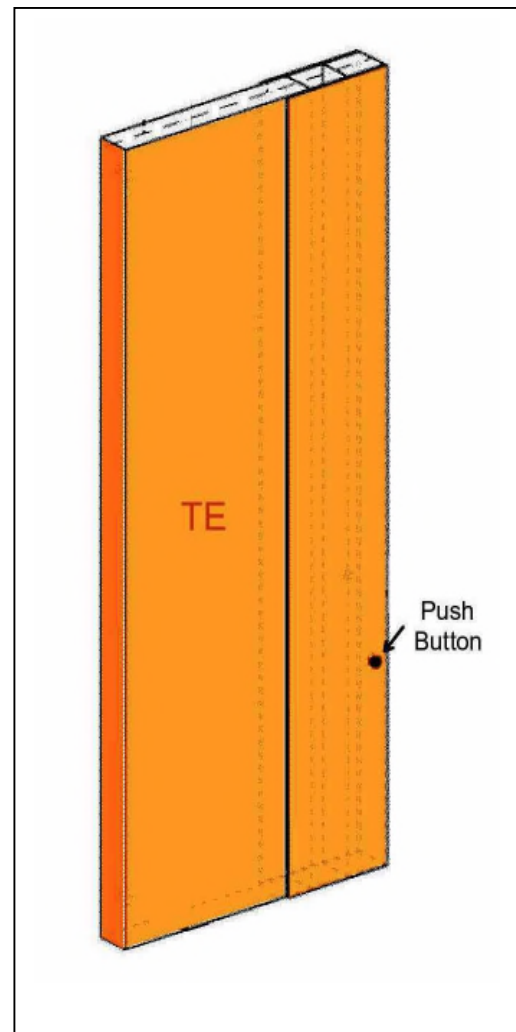
Push the button located on the **TE** panel’s expandable nose.

Continue pushing the button until the expandable nose seals against the trail Jamb and release after the top & bottom seal begins to extend.

Key Switch Location

The SEAL and Blind or shade key switches are mounted to a common face plate and share a 2 ¾” deep single gang electrical box.

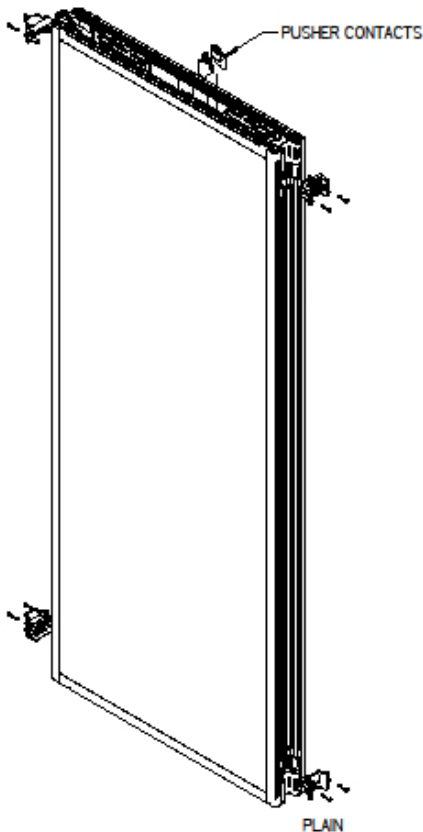
The SEAL and Blind or shade key switches must be installed near the trail end of the run and in a location that gives a clear view of the TE. The key switches must be mounted within 25 feet of the control box.



The SEAL and PDLC key switches are mounted to a common face plate and share a 2 ¾” deep single gang electrical box. The key switches must be mounted within 25 feet of the control box, located on the trail end and in clear view of the TE.

Operating the PDLC Glass

The PDLC Glass is powered by the trail panel with PDLC Glass which makes all the contact dead until the trail panel is moved into place. Once the top seal is extended, the PDLC Glass can be powered by pushing the key switch button. The glass will then change from opaque to translucent.



TRAIL PDLC GLASS PANEL



TRAIL PDLC GLASS PANEL

User Maintenance Instructions

The Acousti-Clear Motorized® system does not contain user serviceable parts. If service is required, please contact your approved service provider.



215 West New Road
Greenfield, IN 46140

Toll Free: 800.869.9685

email: info@modernfold.com

www.modernfold.com