

# INSTALLATION MANUAL

## ACOUSTI-CLEAR MOTORIZED<sup>®</sup>



215 WEST NEW ROAD GREENFIELD, IN 46140

## ABOUT YOUR MODERNFOLD PARTITION

Thank you for choosing a Modernfold Operable partition system. As an industry leader in the moveable partition concept, Modernfold delivers the highest-quality, custom partition solutions from start to finish. Our operable partitions and architecturally-striking glass partition systems wow customers and provide them with endless possibilities for their environments. Where others see only space, Modernfold sees possibilities.

Before installing a Modernfold partition, read this manual carefully as it includes safety warnings, a description of the wall's major components, as well as procedures related to the operation of the partition, and a maintenance schedule.

Use of Modernfold Partitions can result in serious injury or death. Be alert to the possibility of pinching or crushing injuries where the panels retract into the stack, where the panels seal off when extending, and at the locations where two panels meet. Hazards at all these locations could result in serious injury to a person who may be struck, trapped or pinched by moving Partitions. Modernfold Partitions should only be operated by adults who have been trained in their safe operation.

For these safety reasons, Modernfold partitions should only be used in conjunction with Modernfold control boxes that have been tested to work as designed by Modernfold. Use of Modernfold partitions with any other control devices will void the warranty and be at your own risk.

# Table of Contents

## Acousti-Clear Motorized

<b>Warning and Safety Information</b>	Page 4
<b>Introduction</b>	Page 5
<b>Tools Required</b>	Page 6
Common Tools Required for Installation of Acousti-Clear Motorized®	
<b>Step 1 - Preliminary Installation for G150 Track</b>	Page 7 - 10
Beginning the Installation	
Installing Hanger Rods	
Hanging Track Sections	
Leveling the Track	
Cleaning and Lubricating the Track	
<b>Step 2 – Wiring Installation</b>	Page 11 - 17
Control Box	
Polarity Check Instructions	
Troubleshooting	
Wiring Color-Code Key	
Intermediate Panel Internal Wiring Diagram	
Pass door Wiring Diagram	
<b>Step 3 - Panel Installation</b>	Page 18 - 23
Trolley Height Presets	
Installing the Panels	
Roller shade installation	
Glass Installation	
<b>Step 4 – Lead Jamb Installation</b>	Page 24 - 27
<b>Step 5 – Closure Options: AWA, Telescopic Element (TE), &amp; Glass Pivot Door</b>	Page 28 – 38
AWA Installation	
Stroke Adjustment of AWA Nose	
AWA Spacer Installation	
Telescopic Element (TE) Closure	
Glass Pivot Door	

**Step 6 – Pass Door Installation & Emergency Wall Release**Page 39 - 45

---

Single Leaf Pass Door DT  
Double Leaf Pass Door DTZ  
Single Glass Pass Door  
Pass door floor socket  
Emergency wall release

**Step 7 – Classic & Glass Panel T-Intersections**Page 46 – 51

---

T-Intersection Contact Detail  
Removing & Refitting ComforTronic Actuators  
Crank Coupling Assembly Detail

**Step 8 – ComforTronic Actuators**Page 52 - 53

---

**Step 9 – Protector Series**Page 54 - 56

---

**Step 10 – MorphGlas (PDLC Glass)**Page 57 - 59

---

**Step 11 - Operation**Page 60 - 64

---

Extending & Stacking Procedure for Acousti-Clear Motorized®  
Blind Operating Procedure  
AWA Closure Procedure  
Telescopic Element (TE) Closure Procedure  
Protector Series & MophGlas (PDLC Glass)

**Step 12- Maintenance**Page 65

---

Track Maintenance  
Panel Maintenance  
Cleaning

**Operation see Owner's Manual 8301**

---

## Warnings and Safety Information



### WARNING

Operable partitions pose a pinching and/or crushing hazard. To avoid serious injury or death:

- **Do not** operate your operable partition with persons or objects within 4 feet of the operable partition or the partition path, including the stacking area.
  - **Do not** walk or place body parts in front of the partition or into stack area while partition is moving.
  - Ensure no other persons enter the partition path, including the stack area, while wall is moving or being operated.
  - Ensure that both sides of the operable partition, as well as the partition path, are clear of obstructions.
- 
- Operable partitions may be regulated by local, state, or district rules and regulations. All applicable rules and regulations should be reviewed before installation and use.
  - Operators must be above the **age of eighteen (18)** and trained in the safe operation of the partition and understand its safety features.
  - **Do not** place objects between the panels, in the path of the operable partition, in the stack area, or in the near vicinity of the operable partition as this can damage the operable partition when it is in motion.
  - In case of malfunction, **do not** operate the operable partition or attempt to repair it. Contact your authorized local operable dealer for service.
  - **Do not** operate your operable partition if it is making any abnormal noises or if the operable partition does not appear to be working properly. Contact your authorized local operable dealer immediately.
  - **Do not** operate your operable partition if a panel is loose or displaced from its normal securely fastened position.
  - **Do not** operate your operable partition if panels are missing as this can damage the system.
  - Operable partitions are intended only for interior use in which the room is climate controlled.
  - **Do not** force the panels into the stacked position
  - To prevent floor damage, **only** operate partitions over finished floors which are fully cured and clean of debris (See Manufacturer's Recommendations)
  - Track systems are designed to support the weight of the partitions only. **Do not** hang anything from the track or the partitions.

## PROCEDURE FOR INSTALLING ACOUSTI-CLEAR MOTORIZED

### Purpose

To properly document the correct methods and processes required for the installation of Acousti-Clear Motorized.

### Before Beginning Installation

#### Installation Precautions

- Installation of Modernfold partitions should only be performed by certified trained professionals. Failure to follow this requirement will result in a voided warranty.
- Proper protective equipment should be used on all installations of Modernfold partitions.
- **Do not** alter any track suspension bracketing or hanger rods in any way.

#### Review drawing and field Conditions

- Make sure you have drawings for fabrication, not approval drawings.
  - Verify opening dimensions against drawings.
  - Make sure existing building partitions are properly reinforced for jamb attachments at each end of the opening.
  - Examine pocket and/or stack area for proper clearance and adequate depth.
  - Look for any job site conditions that could interfere with installation or operation of the partition.
  - Verify that control stations are at least four feet from the stacking area or partition path.
- 
- **All discrepancies must be corrected before installation can begin**
  - **Read installation instructions completely before beginning installation**
  - **Call the Modernfold Tech Line if you have problems or questions with installation at 1-866-561-8324**
  - **Verify all parts against the packing list**
  - **Locate and lay out all pieces**
  - **Be prepared to verify track level and straightness with laser or other leveling instruments. Finished track installation must be straight and level.**

## Tools Required

---

**Assembly requires common tools as hammers, screwdrivers, tape measures, etc and:**

- Heavy Duty Drill
- Drill Bits (include 9/16")
- 4'-0" Level and/or Laser Level
- Torpedo Level(s)
- Cordless Drill & Various Phillips Bits
- Set of Allen Wrenches
- Rubber Mallet
- Petroleum Jelly (to lubricate track)
- Clean cloths
- Paper towels
- Set of Wrenches
- Socket set

## Preliminary Installation

Modernfold defines the preliminary installation as the installation of the suspension system and its related parts. The Acousti-Clear Motorized® single panel operable partition is installed on our G150 suspension system. The installation of each piece of track is mounted to the header, secured together, and leveled and plumbed.

### G150 Suspension System

Made with all aluminum tracks, and steel mounting plates for indirect mounting, the G150 Suspension System is designed and built to last. G150 is typically used for lower height single panel configurations when a right angle turn or switch and curve are desired.

### Opening Tolerances and Site Guidelines

**Steel** – Must be level within 1/8" (.12-inch) across the entire length of the track including the stack area.

**Track** – Must be level within 1/8"(.12-inch) across the entire length of the track including the stack area.

**Floor** – Must be level within 1/4" (.25-inch) across the entire length of the opening including the stack area.

**The maximum out of level, overall, is 1/8" (.12-inch) on either side of the opening.**

### Step 1- Preliminary Installation for G150 Tracks

---

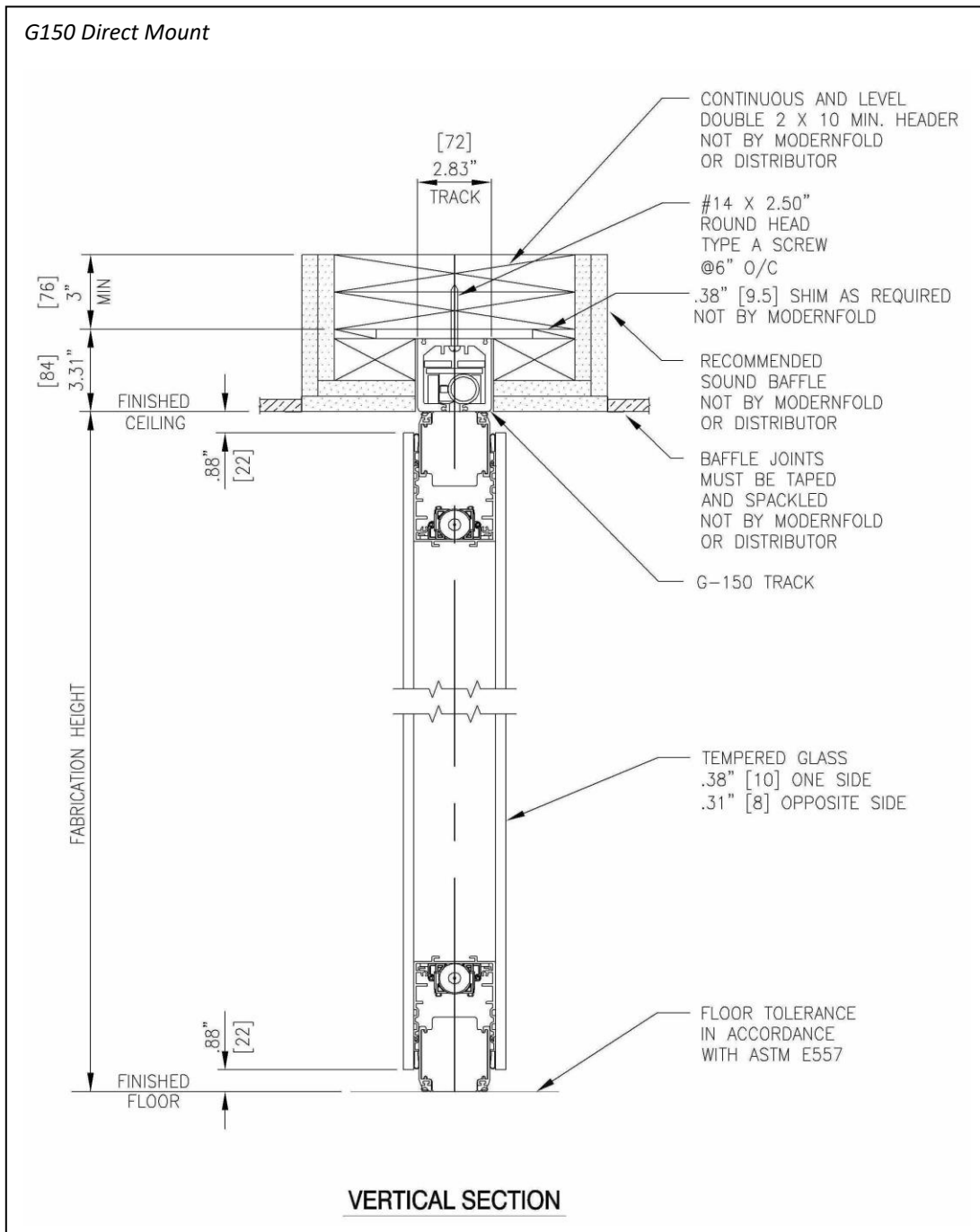
***Important Note: G150 Tracks require a wiring pass-thru at both the lead ends and trail ends of the track. On all tracks leave a wiring pass-thru space of approximately 1/2" at both the trail end (for the AWA) and lead end (for lead jamb wiring). Another method for bracket mount – Drill two 3/4" holes in the top flat of the track. Locate the first, 1" off the lead end and the second, 2" off the trail end of the track.***

### Beginning the Installation – G150 Track

Chalk a line in the center of the header where the track will hang. Mark the spacing of each thru hole in the track along this center line. The track is predrilled every 6-inches with 5/16-inch clearance holes for screws. Then drill (or tap) the header for the proper type of fastener. There are no fasteners shipped with the suspension system. You will have to provide the proper anchor and fastener for your type of installation. **(See page 6 illustration – G150 Direct Mount- for head depth)**

### Hanging Track Sections

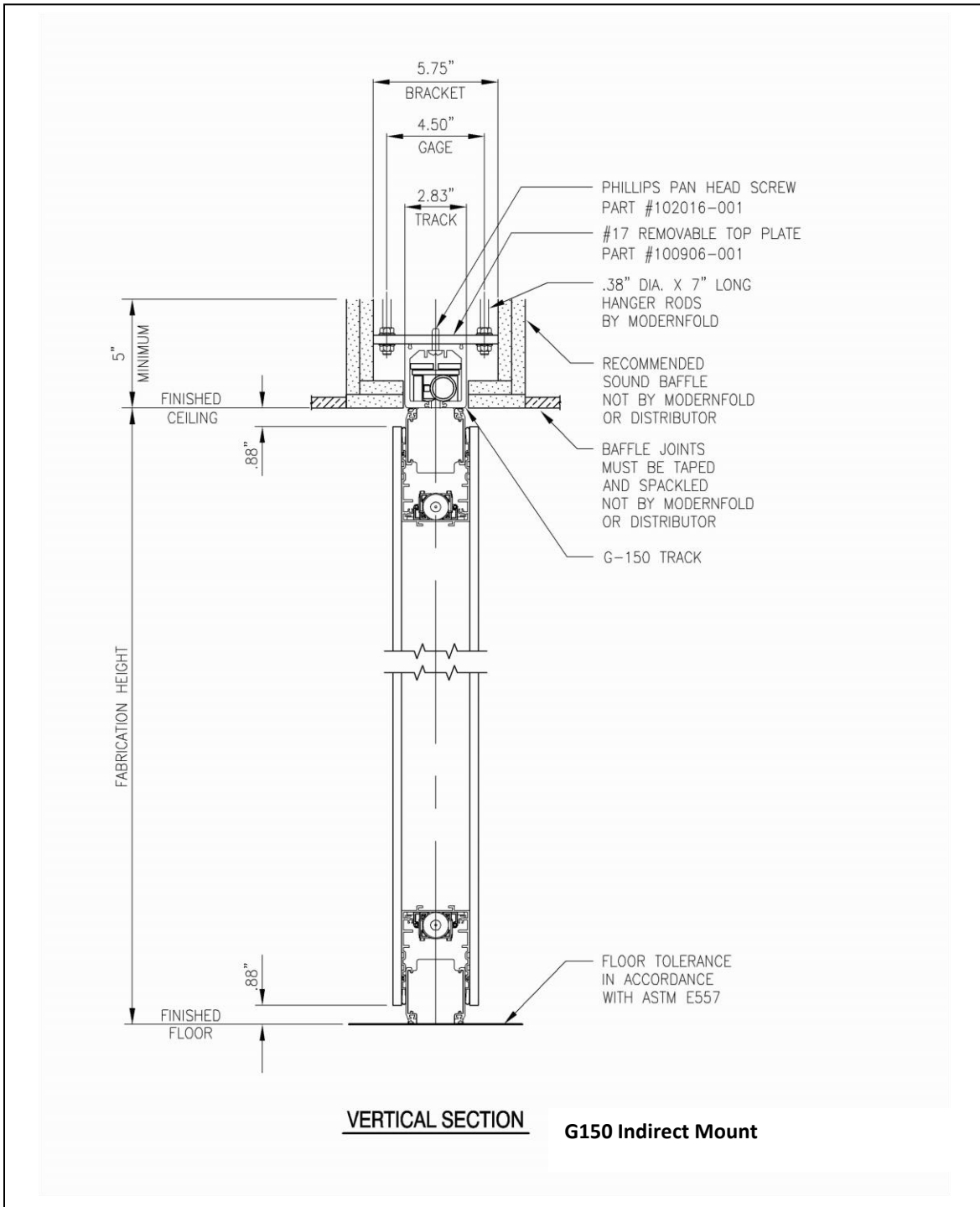
The first assembly to be installed will be the stack area weldment. Lift into place and install with fasteners determined by type of header system installed. Next section (piece) to be installed is the removable (maintenance) section. Groove pins will be used at the running edge joints only. Drill (or tap) header to accommodate the same fastener used to attach other track sections.



Screw removable section to header. Then use a blade screwdriver to position pins over joints **after** the panels have been installed. Continue installing the remainder of the intermediate sections. First, guide the track section onto previous track section's splice pins and then fastening to the header. Lastly, install 4 groove pins into the opposite end of the track, groove end first, and insert approximately 3/8-inch with 3/8-inch exposed. Continue with remainder of sections until complete.

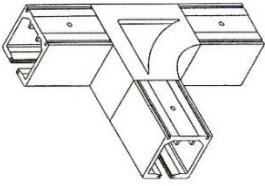
### G330 Indirect Mount

For the G150 Indirect mount suspension system, layout and drill or punch 7/16-inch (0.44) diameter thru holes in the structural support, refer to your job specific beam punching layout.



## Installing Switches

The G150 switch is available as both direct and indirect mount. Be sure to use the layout drawings for the proper position and orientation of the switch and curve intersections in your installation. It is important that each switch be installed in its proper place in order for the switch's programming lugs to perform appropriately.



G150 Direct Mount L.H. Switch

**NOTE: Be sure to note that the bracket spacing for the stack area is different from the rest of the opening. This is to handle the concentrated weight of the panels in a small area.**

## Installing the Hanger Rods

Attach the first two (2) pairs of hanger rods to the structural support using a 3/8" flange nut on both sides of the support. Then attach a pair of hanger rods at or near the lead end of the first section of track. This procedure will allow you to hang each end of the track section, and then install the remaining intermediate hanger rods. Alternatively, you can install all of the hanger rod pairs at the same time. This will allow you to attach the brackets sequentially, which may be easier for some job site conditions.

## Hanging Track Sections

### 1<sup>st</sup> Section

Lift the track into place and slide the brackets over the hanger rods, either at each end or sequentially, depending upon which method of hanger rod installation you used. Again, be sure to use a flange nut on **both** sides of the hanger bracket. Do not completely tighten the flange nuts at this time. You will be adjusting them as each section is installed.

### Intermediate Sections

Each track section is hung in the same manner as the first section. Attach a pair of hanger rods near each end of the section (or for each bracket), securing to the structural support with a flange nut on both sides. If the attachment at the structure is not a thru-hole connection, only one flange nut is required.

### Final Section

The final (removable) track section is also hung by attaching the hanger rods to the structural support and to the brackets on the track.

### Leveling the Track

When all the track sections are installed, level the entire track. Be sure fabrication height is correct, and then check for any loose hanger rod flange nuts. If the track is direct mounted, shim the entire track as necessary to correct discrepancies in the header. Finally, check the track joints to insure that the track is straight and that all of the sections fit together without gaps. Also make sure that there are no burrs or offsets to interfere with the trolley operation. For G150 direct and indirect mount, make sure that the splice pins are positioned securely.

### Cleaning & Lubricating the Track

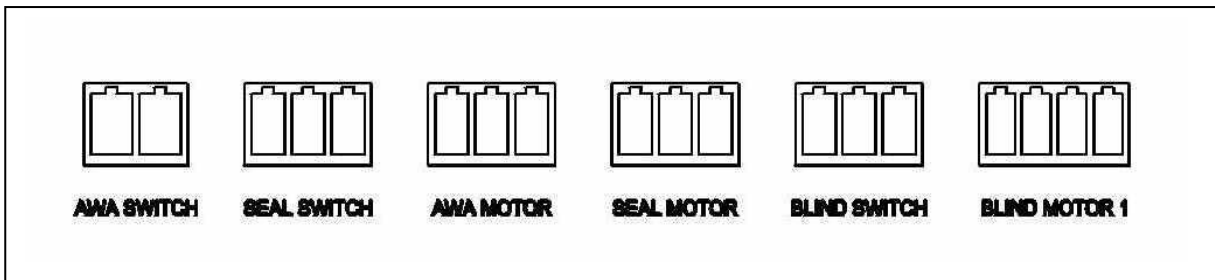
Clean the inside of the track to remove dirt, shavings, or other foreign matter that may interfere with the operation of the partition (Small screws can be particularly damaging to trolley wheels). Then coat the inside of the track with a thin covering of petroleum jelly (i.e. Vaseline).

## Step 2- Wiring Installation

### Standard Wiring for Acousti-Clear Motorized

For wiring instructions after installing the track preliminary, see Acousti-Clear Motorized® installation instructions, Addendum I.

### Control Box



The control box is to be mounted in the stack area. If mounted in an enclosed space, a 24" x 36" access panel should be installed.

A 6-foot armored cable pigtail will be included for electrician to mount to disconnect box.

All other wiring is accomplished through low voltage connectors.

# ACOUSTI-CLEAR MOTORIZED POLARITY CHECK INSTRUCTIONS

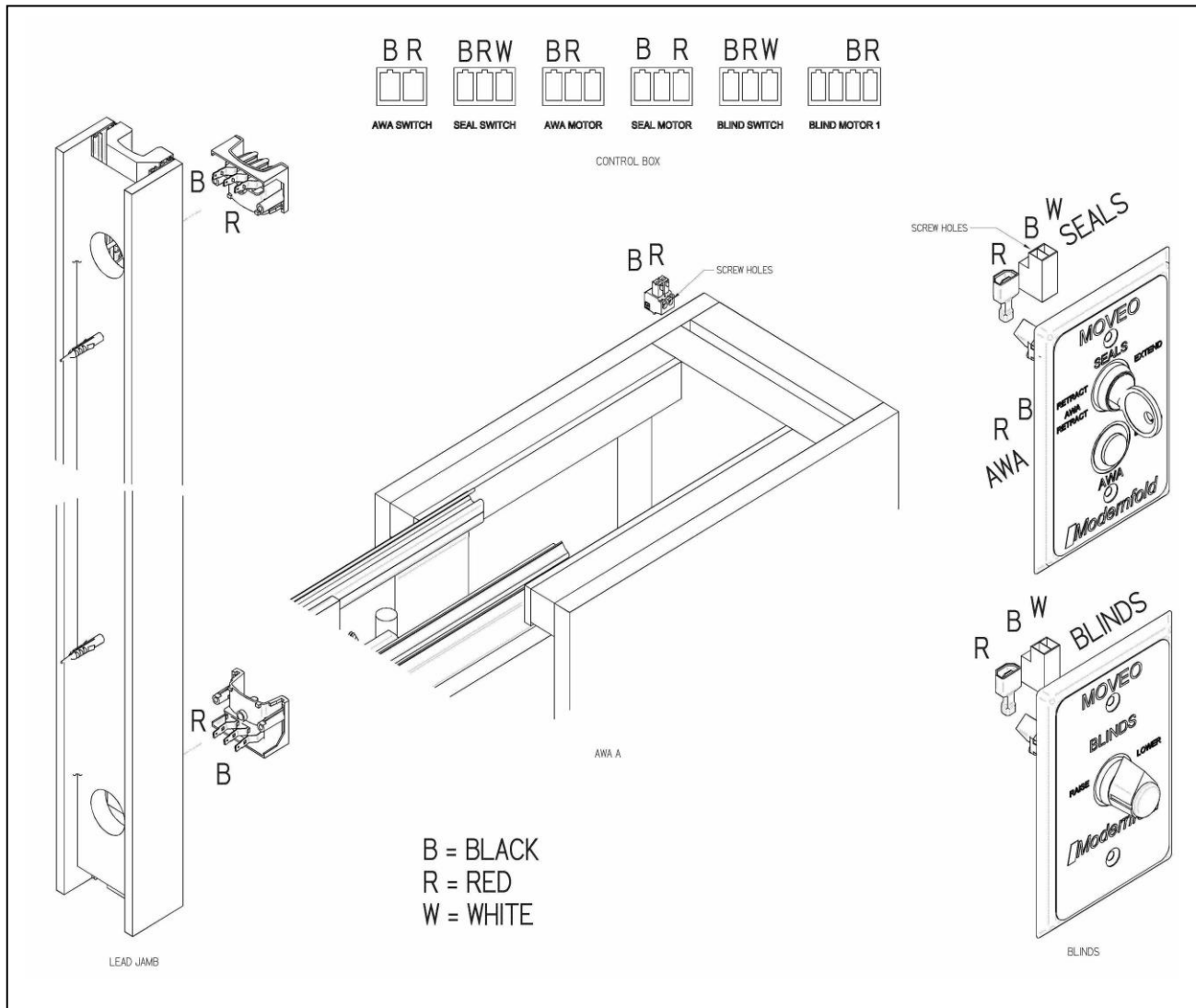
CONTROL BOX CONNECTIONS																											
AWA SWITCH		SEAL SWITCH			AWA MOTOR			SEAL MOTOR			BLIND SWITCH			BLIND MOTOR 1				BLIND MOTOR 2 (OPTIONAL)									
1	3	2	3	4	7	8	X	9	X	10	15	16	17	X	X	11	12	X	X	13	14						
STEP	ACTION											RESULT		STEP	ACTION											RESULT	
1	REMOVE ALL CONNECTIONS TO "MOTOR" TERMINALS - LEAVING ALL SWITCH CONNECTIONS IN TACT											N/A		8	SET SEAL SWITCH TO "RETRACT", AWA SWITCH "OFF"											N/A	
2	SET VOLT METER TO READ "DC" VOLTAGE											N/A		9	PLACE RED PROBE FROM VOLT METER ON TERMINAL 7 (AWA MOTOR) AND BLACK ON TERMINAL 8											VOLTAGE READ-OUT SHOULD BE "-24" VOLTS (NEGATIVE)	
3	SET SEAL SWITCH TO "EXTEND", AWA SWITCH "OFF"											N/A		10	PLACE RED PROBE FROM VOLT METER ON TERMINAL 9 (SEAL MOTOR) AND BLACK ON TERMINAL 10											VOLTAGE READ-OUT SHOULD BE "41" VOLTS (POSITIVE)	
4	PLACE RED PROBE FROM VOLT METER ON TERMINAL 7 (AWA MOTOR) AND BLACK ON TERMINAL 8											VOLTAGE READ-OUT SHOULD BE "0"		11	SET SEAL SWITCH TO "OFF" POSITION. SET BLINDS SWITCH TO "LOWER"											N/A	
5	PLACE RED PROBE FROM VOLT METER ON TERMINAL 9 (SEAL MOTOR) AND BLACK ON TERMINAL 10											VOLTAGE READ-OUT SHOULD BE "-41" VOLTS (NEGATIVE)		12	PLACE RED PROBE FROM VOLT METER ON TERMINAL 11 (BLIND MOTOR) AND BLACK ON TERMINAL 12											VOLTAGE READ-OUT SHOULD BE "-24" VOLTS (NEGATIVE)	
6	SET AWA SWITCH TO "EXTEND" WITH SEAL SWITCH STILL IN "EXTEND" POSITION											N/A		13	PLACE RED PROBE FROM VOLT METER ON TERMINAL 13 (OPTIONAL BLIND MOTOR) AND BLACK ON TERMINAL 14											VOLTAGE READ-OUT SHOULD BE "-24" VOLTS (NEGATIVE)	
7	PLACE RED PROBE FROM VOLT METER ON TERMINAL 7 (AWA MOTOR) AND BLACK ON TERMINAL 8											VOLTAGE READ-OUT SHOULD BE "24" VOLTS (POSITIVE)		14	REPLACE ALL CONNECTIONS TO "MOTOR" TERMINALS											N/A	

# ACOUSTI-CLEAR MOTORIZED

## "TROUBLESHOOTING"

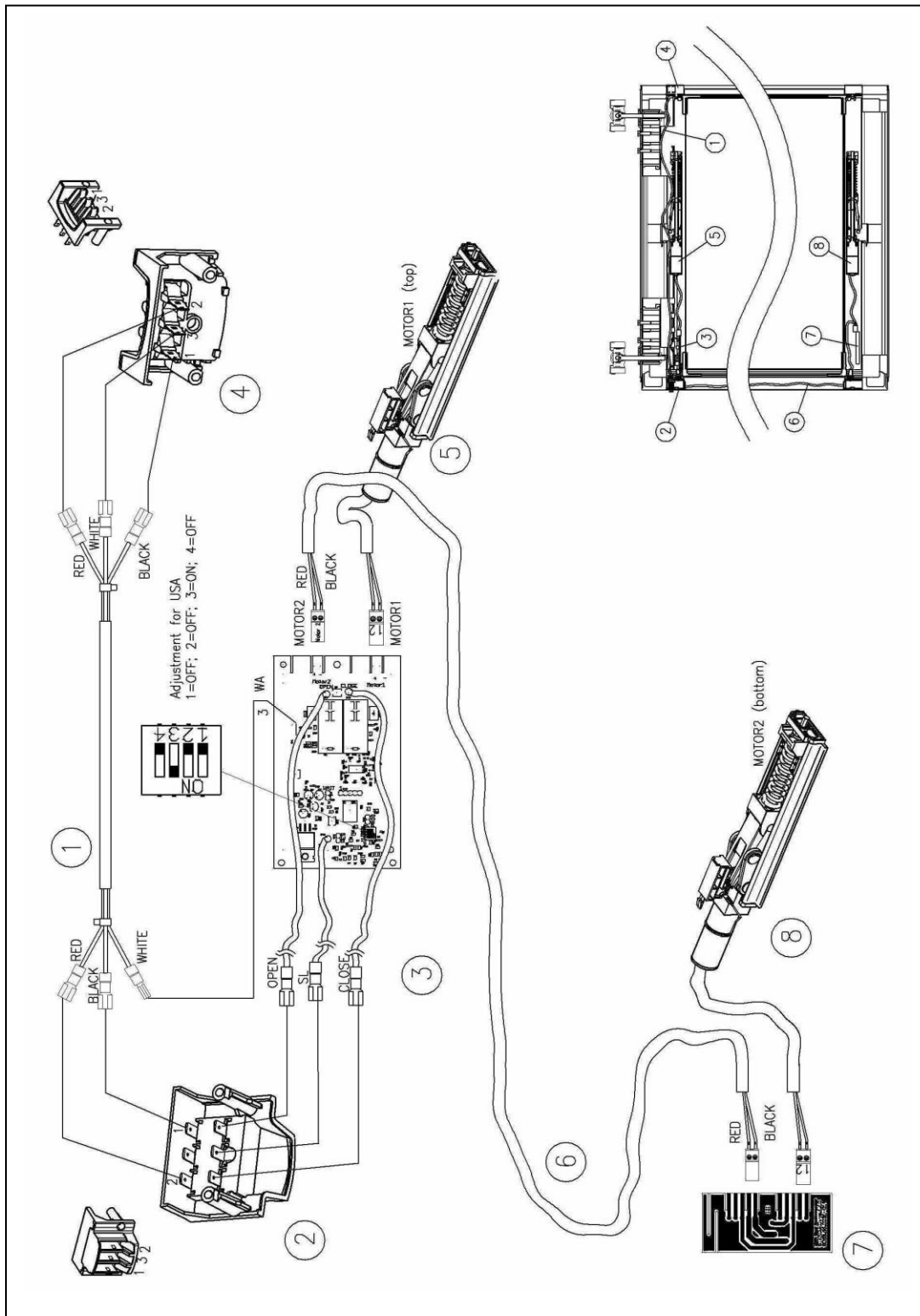
NOTE: ALWAYS PERFORM POLARITY CHECK BEFORE PROCEEDING WITH ACTIONS IN TABLE BELOW. IF CONTROL BOX PASSES POLARITY CHECK - BOTH CONTROL BOX AND KEY SWITCHES ARE GOOD					
	KEY POSITION			PROBLEM	REQUIRED ACTION
	SEAL	AWA	BLINDS		
(1)	EXTEND	EXTEND	LOWER	NO MECHANISMS WORK WHEN KEYS ACTIVATED	a. CHECK CIRCUIT BREAKER b. CHECK DISCONNECT c. CHECK CONTROL BOX FOR PROPER POWER
(2)	EXTEND	OFF	OFF	SEALS EXTEND AWA EXTENDS AUTOMATICALLY	a. WIRES GOING TO AWA MOTOR SHOULD BE FLIPPED (WIRES GOING TO 7 & 8 ON CONTROL BOX) b. WIRES GOING TO TOP OF LEAD JAMB SHOULD BE FLIPPED (WIRES GOING TO 9 & 10 ON CONTROL BOX) c. WIRES GOING TO SEAL SWITCH SHOULD BE FLIPPED (WIRES GOING TO 2 & 4 ON CONTROL BOX)
(3)	RETRACT	OFF	OFF	SEALS EXTEND AWA RETRACTS AUTOMATICALLY	WIRES GOING TO TOP OF LEAD JAMB SHOULD BE FLIPPED (WIRES GOING TO 9 & 10 ON CONTROL BOX)
(4)	EXTEND	EXTEND	OFF	SEALS EXTEND AWA RETRACTS	WIRES GOING TO AWA MOTOR SHOULD BE FLIPPED (WIRES GOING TO 7 & 8 ON CONTROL BOX)
(5)	EXTEND	EXTEND	OFF	SEALS RETRACT AWA EXTENDS	WIRES GOING TO TOP OF LEAD JAMB SHOULD BE FLIPPED (WIRES GOING TO 9 & 10 ON CONTROL BOX)
(6)	RETRACT	OFF	OFF	SEALS RETRACT AWA EXTENDS AUTOMATICALLY	WIRES GOING TO AWA MOTOR SHOULD BE FLIPPED (WIRES GOING TO 7 & 8 ON CONTROL BOX)
(7)	OFF	OFF	RAISE	BLINDS LOWER	WIRES GOING TO BOTTOM OF LEAD JAMB SHOULD BE FLIPPED (WIRES GOING TO 11 & 12 ON CONTROL BOX)
(8)	OFF	OFF	LOWER	BLINDS RAISE	WIRES GOING TO BOTTOM OF LEAD JAMB SHOULD BE FLIPPED (WIRES GOING TO 11 & 12 ON CONTROL BOX)
(9)	OFF	OFF	RAISE / LOWER	BLINDS AFTER "TRACK CONTACTS" OPERATE OPPOSITE OF BLINDS BEFORE "TRACK CONTACTS"	WIRES GOING TO TRACK CONTACTS SHOULD BE FLIPPED (WIRES GOING TO 13 & 14 ON CONTROL BOX)
(10)	EXTEND / RETRACT	OFF	OFF	SEALS AFTER "TRACK CONTACTS" OPERATE OPPOSITE OF SEALS BEFORE "TRACK CONTACTS"	WIRES GOING TO TRACK CONTACTS SHOULD BE FLIPPED (WIRES GOING TO 9 & 10 ON ADDITIONAL CONTROL BOX)

## AAWA Wiring Color-Code Key



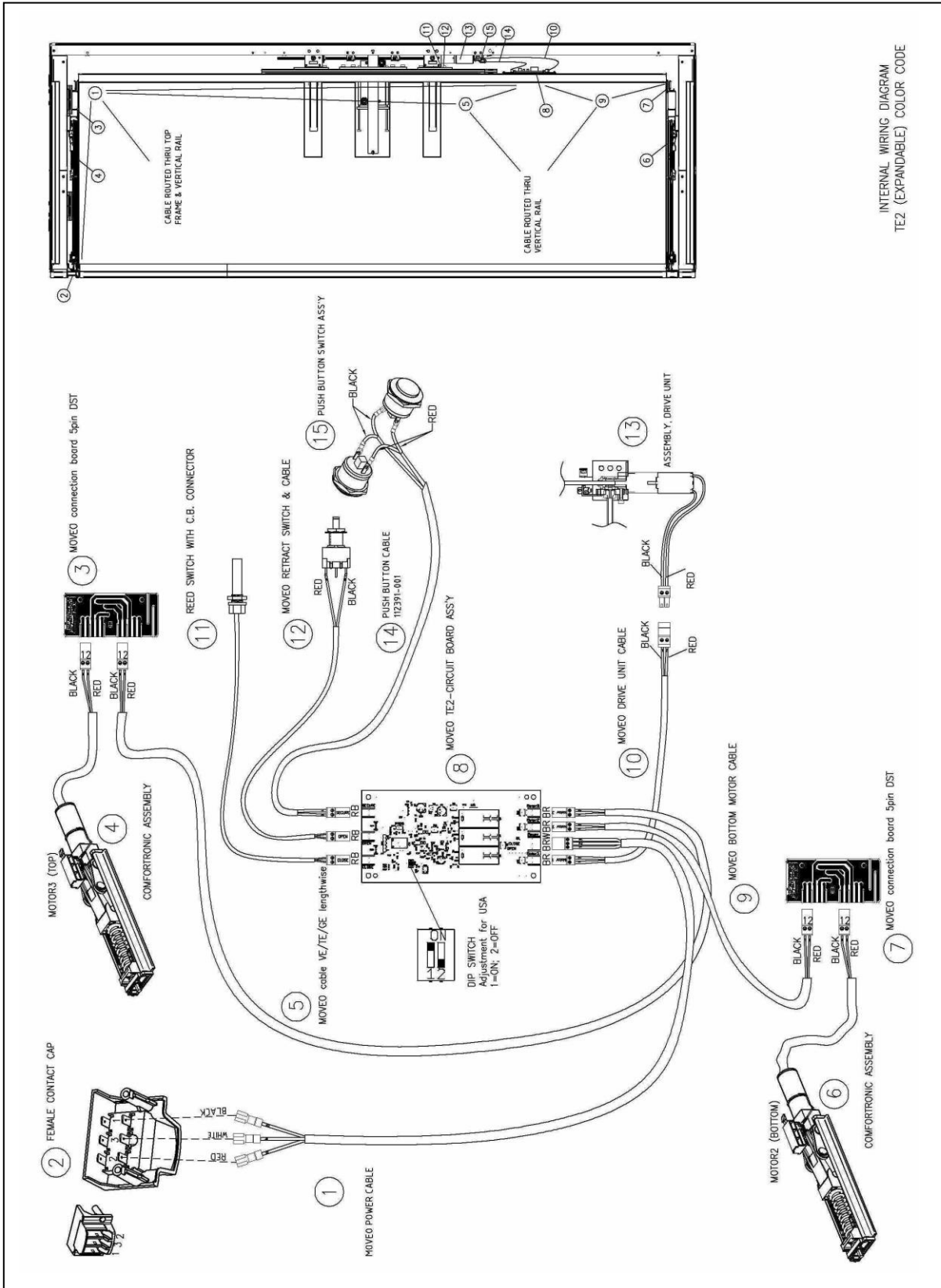
The Color-Code Key illustration above depicts the wiring from the Control Box to the Lead Jamb, AWA, and both Key Switches.

### Acousti-Clear Motorized® Intermediate Panel Internal Wiring Diagram Color Code

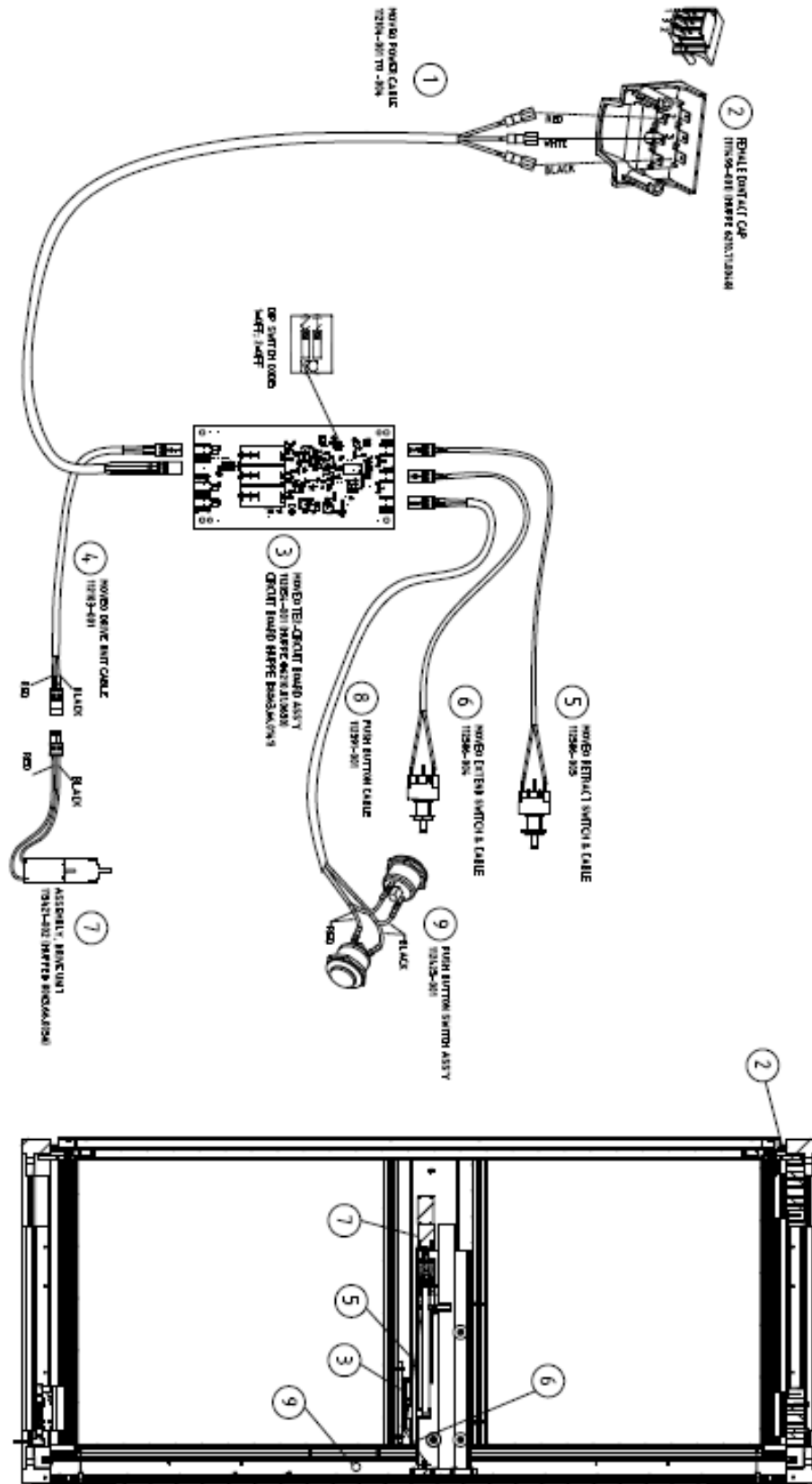




# Acousti-Clear Motorized® Internal Wiring Diagram TE Color Code



# Acousti-Clear Motorized® Glass Expandable Wiring Diagram Color Code



## Installation

### Panel Design



1. Trolleys
2. Corner seals
3. Power feeder
4. ComforTronic actuator
5. Seals

Acousti-Clear Motorized® partition panels are equipped as standard with automatic **ComforTronic**® actuators for extending and retracting the top and bottom seals.

The **ComforTronic**® system in modified form is also used for the seals of pass doors.

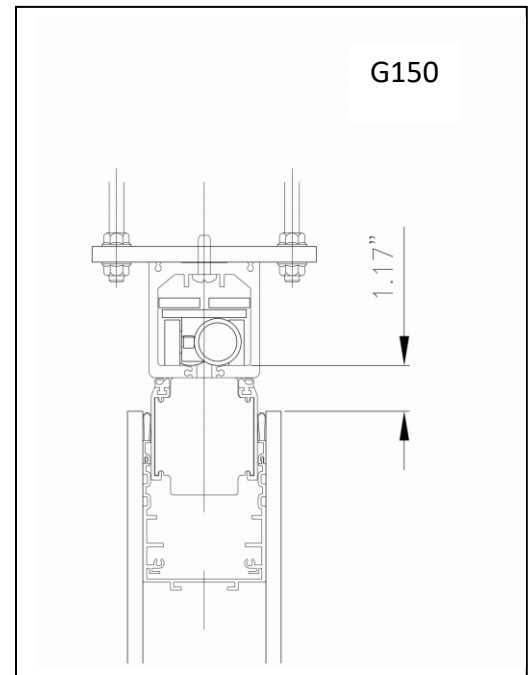
## Trolley height Presets

If the suspension system was installed at an earlier date, it should be checked for level and readjusted as necessary before panels are installed. Also confirm that **all** hardware has been properly tightened.

Prior to hanging the panels, conduct the following inspections:

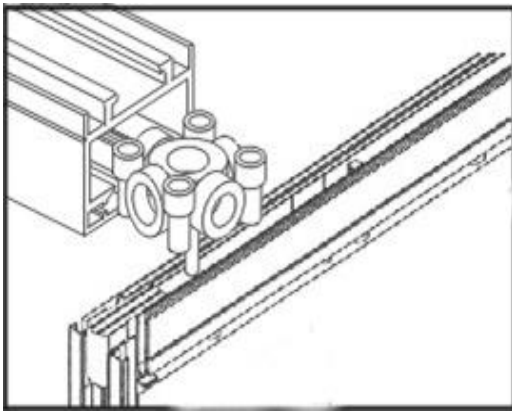
- Inspect each panel for damage; make any repairs.
- Inspect trolley pendant bolts for damage.

The trolleys for the G150 are preinstalled at the factory (1.17-inches). Final adjustments may be required later on in the installation process. Final adjustments to the trolley set dimension may be required later on in the installation process.



**NOTE:** Be careful when lifting each panel to avoid placing weight on the bottom edge of the panel and the bottom seal mechanism. The bottom seal mechanisms can be damaged as a result.

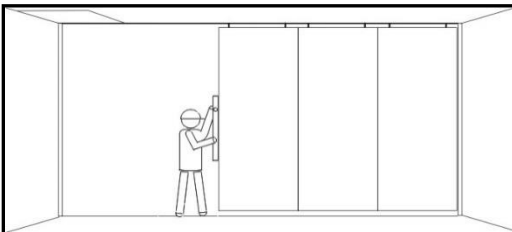
## Hanging the Panels



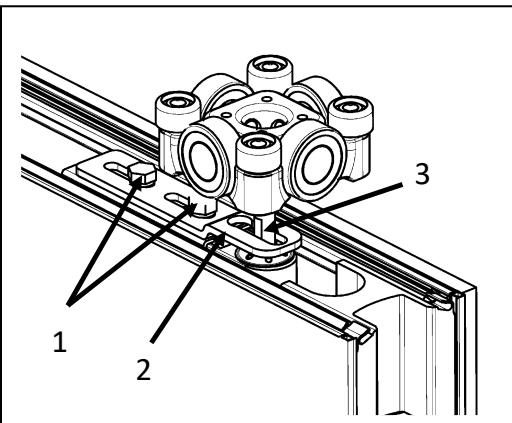
Insert the panel trolleys into the track:

- For Recessed Mounted track you must remove the 4-foot removable track section located at the lead end of the opening
- For Surfaced Mounted track you must remove the removable track section at the lead end of the opening

Identify each panel and stage them in preparation for hanging. The panels are hung in accordance with the layout drawings.



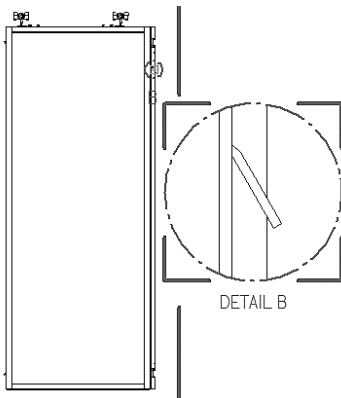
Pass door panels are supplied pre assembled.



To adjust trolleys loosen the two 13 mm hex head screws (1). Push the lock plate (2) in the direction of the trolley bolt (3). Using a 9 mm wrench at the trolley bolt flats, you can then adjust the roller bolt as required,

**Note: the trolley block can be adjusted sideways +/- 10 mm. The position of the trolley bolt needs to be controlled exactly. Following the adjustment, push the lock plate back into position and snugly re-tighten the hex head screws.**

## Roller Shade Installation



### NOTICE

Panels with roller shades come with a shipping rod to keep the roller shades in place during shipment. This shipping rod must be removed immediately after the panels are hung. **Modernfold is not responsible for panel/site damage if the shipping rod is removed prior to panels being hung or after panels are stacked or setup in the run.** Other than this, Installation of roller shade panels is the same as other Acousti-clear Motorized panels.

**Note: If shades run in the wrong direction switch wire leads at bottom lead jamb contact.**

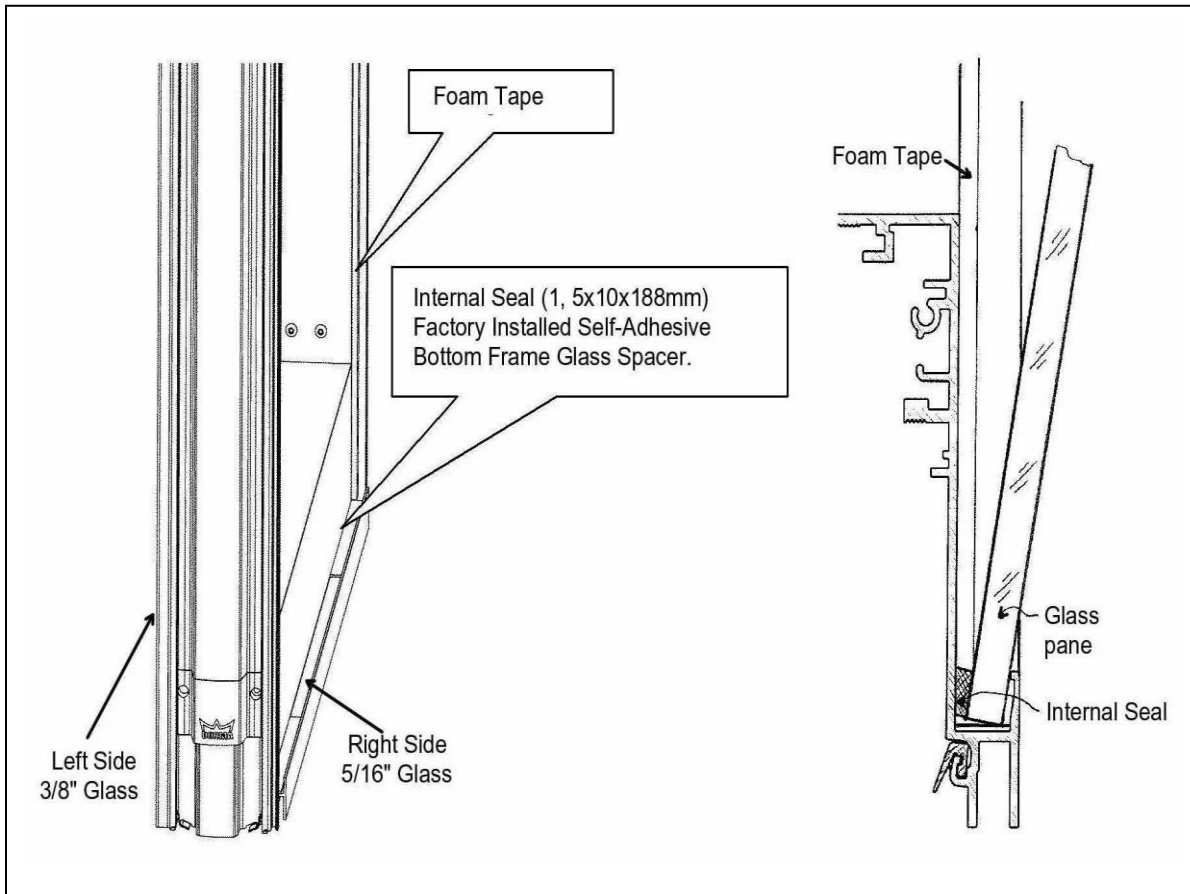
## Assembly Installation for Acousti-Clear Motorized® Glass

**Note: Acousti-Clear Motorized® Glass panels must consist of (1) 5/16" & (1) 3/8" Glass Panes.**

### PRE-GLASS FACTORY INSTALLATION:

On the left side with **3/8"** glass: **1/8" GRAY FOAM TAPE** IS FACTORY INSTALLED.

On the right side with **5/16"** glass: **3/16" BLACK FOAM TAPE** IS FACTORY INSTALLED.



**Note: The frame and the glass panes must be checked and cleaned before assembly.**

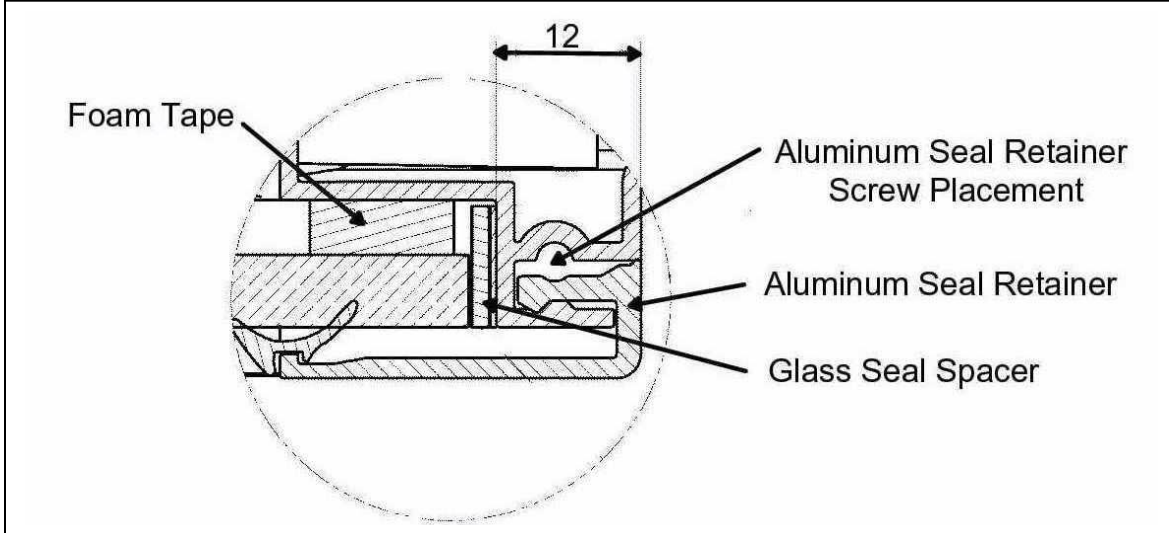
The glass panes are put in the frame and are secured with the Aluminum Seal Retainer and Glass Seal. The gap between the frame and the glass pane be filled in on the sides with the Glass Seal Spacer (self-adhesive).

The following steps should be taken after each pane of glass is placed in the panel:

**#1.** Insert the Aluminum Top Seal Retainer.

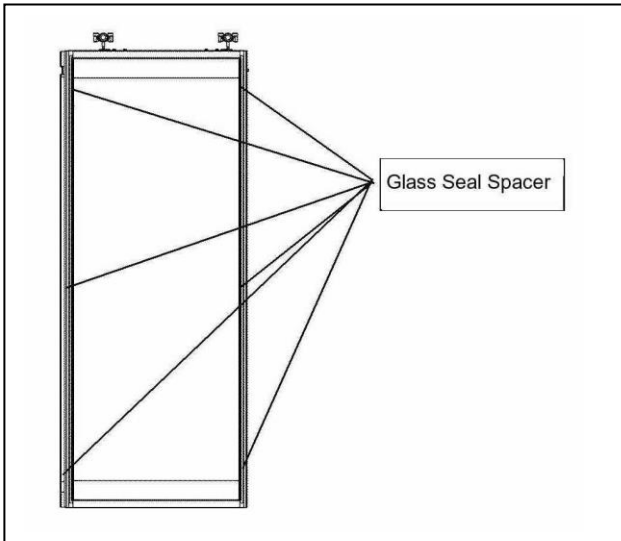
**#2.** Center the glass evenly with the following combination of glass spacers:

0,5x10x100mm (Glass Seal Spacer self-adhesive)



1,5x10x100mm (Glass Seal Spacer self-adhesive)

The glass seal spacer (self-adhesive) should be adhered to the frame in each case at the bottom, on top, and in the middle.



**Note:** # of Seal Spacers used will vary depending on fit of glass to the frame.

**Please make sure that the glass is square to the frame.**

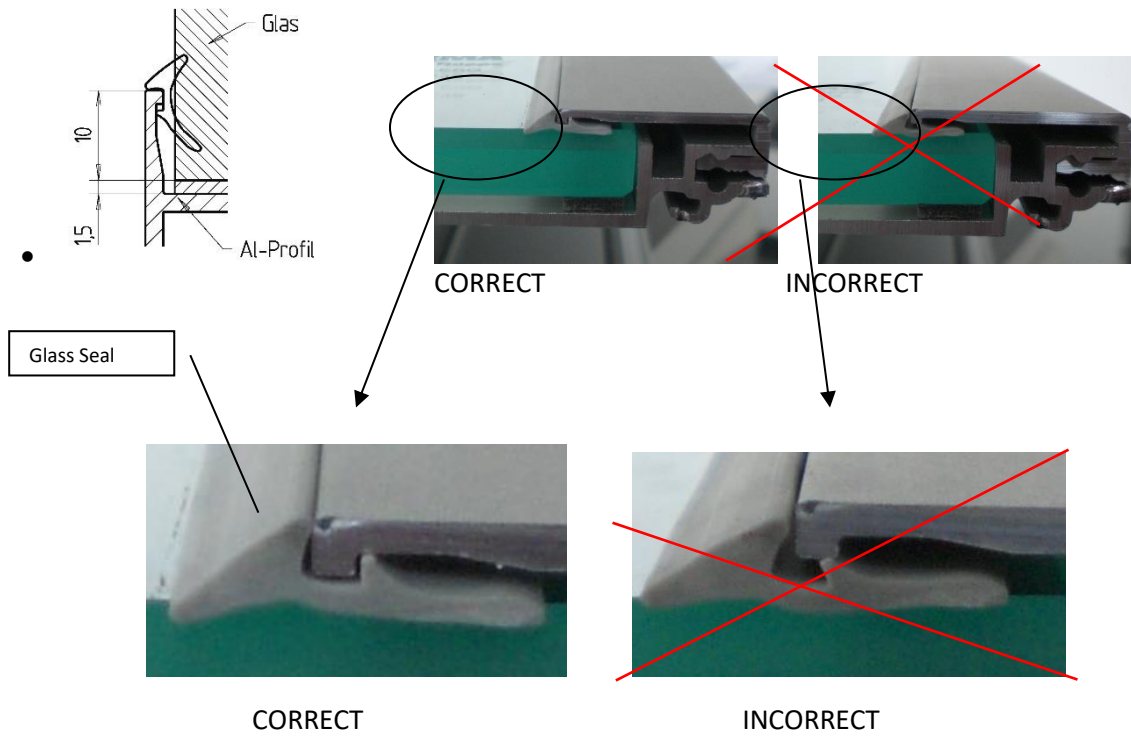
**#3.** Insert remaining aluminum vertical seal retainers.

**#4.** Slide in glass seal. (Miter 45°.on ends)

Insert Glass Seal at top. Then, while pushing in an upward direction, work seal under Aluminum Seal Retainer. Pushing upward should keep the seal from stretching.

**#5.** Insert screws into the bottom edges of the Aluminum Seal Retainer to prevent seals from slipping. (See illustration on Page 17) (4-Places)

**Note:** Glass seal must be inserted as shown in picture below to fully secure glass panel.



**Note:** Spraying Windex on glass before attempting to install will let glass seal slide easier.

## Step 4- Lead Jamb Installation

INSTALLATION OF JAMB WALL CHANNEL - DETAIL A

The Jamb wall Channel is mounted on the lead end of a standard layout. An access hole is pre-cut into the top of the channel recess. This hole is used to attach cable leads from the control box to the ComforTronic.

A second access hole is pre-cut in the bottom of the channel to use as cable access for MOVEO partition with blinds.

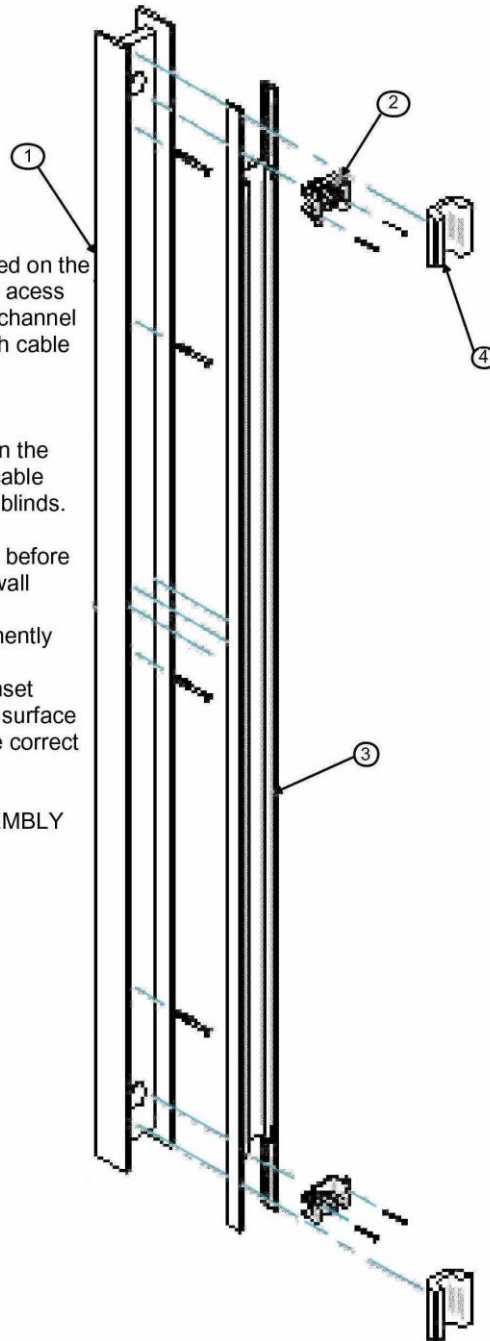
NOTE: Cable(s) must be in place before the final installation of the Jamb wall channel.

The Jamb wall channel is permanently mounted to the wall.

The Jamb wall channel may be inset mounted to be flush with the wall surface if you trust the GC to give you the correct size recess.

### JAMB WALL CHANNEL ASSEMBLY

1. JAMB WALL CHANNEL
2. CONTACT ASSEMBLY
3. VERTICAL RAIL
4. END CAP

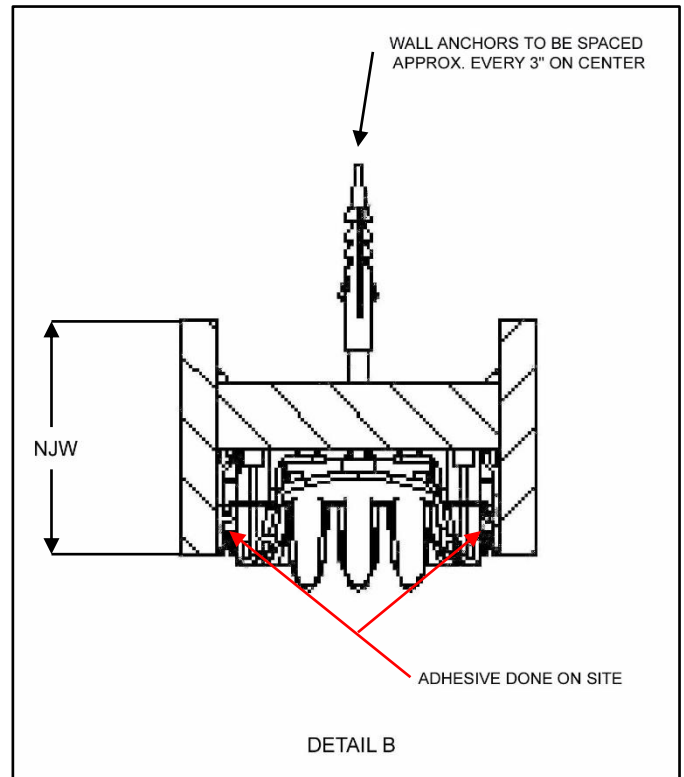


*\*See Addendum 1 for Wiring Installation\**

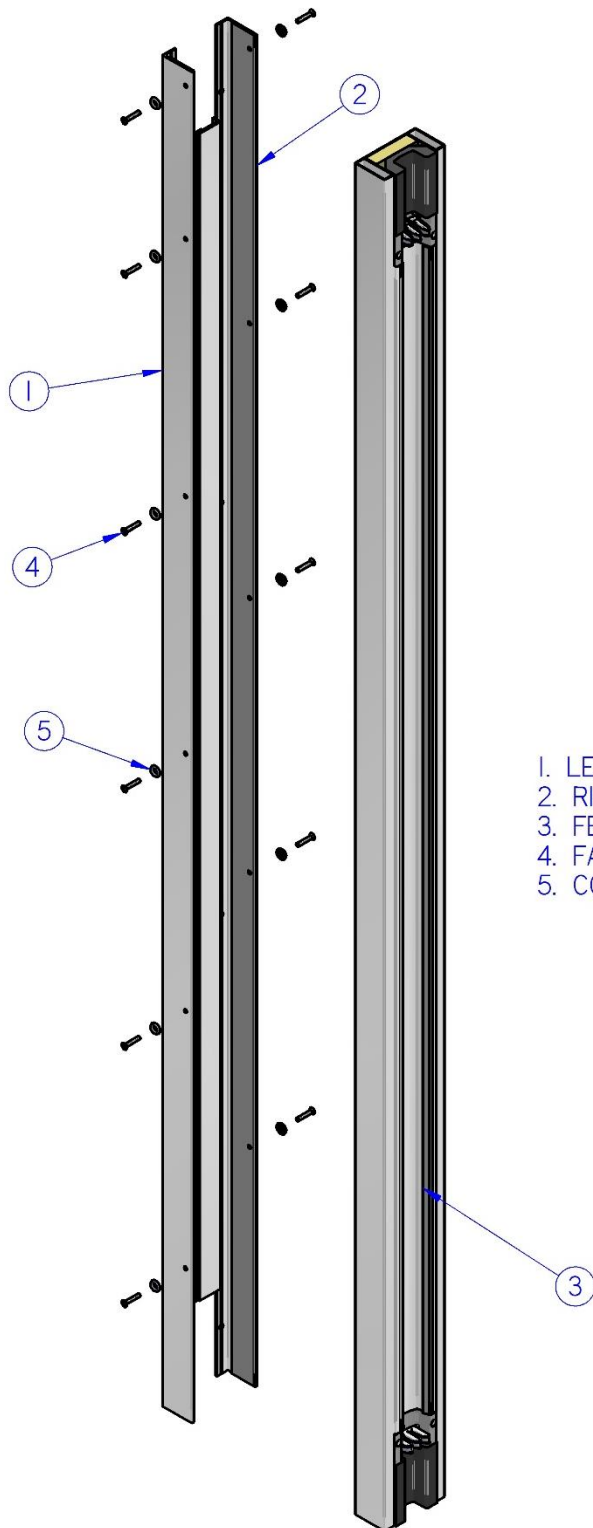
## Installation of Classic Jamb Wall Channel - Continue

To Install (See Details A & B):

1. Using the center of the track as a guide and mark the location of the (1) Jamb Wall Channel.
2. Mount (1) Jamb Wall Channel to the existing wall. (If blinds are required, pull blind wires to bottom access hole before mounting).
3. Connect wires to top jamb male (2) Contact Assembly.
4. A-line top jamb male (2) Contact Assembly with the trail panel female Contact Assembly.
5. Mark the appropriate jamb male (2) Contact Assembly location.
6. Screw the jamb male (2) Contact Assembly into place.
7. If blinds are required, connect wires at bottom access hole to bottom jamb male (2) Contact Assembly.
8. Assemble (3) Vertical Rail.
9. Apply adhesive to the outside of the (3) Vertical Rail. (See Detail B)
10. Slide center portion of the (3) Vertical Rail upward to converge with bottom edge of the top jamb male (2) Contact Assembly.
11. Screw the bottom jamb male (2) Contact Assembly in place.
12. Trim the top and bottom (4) End Caps to size. Install at top and bottom of (1) Jamb Wall Channel and adhere in place.



## Installation of Adjustable Lead Jamb

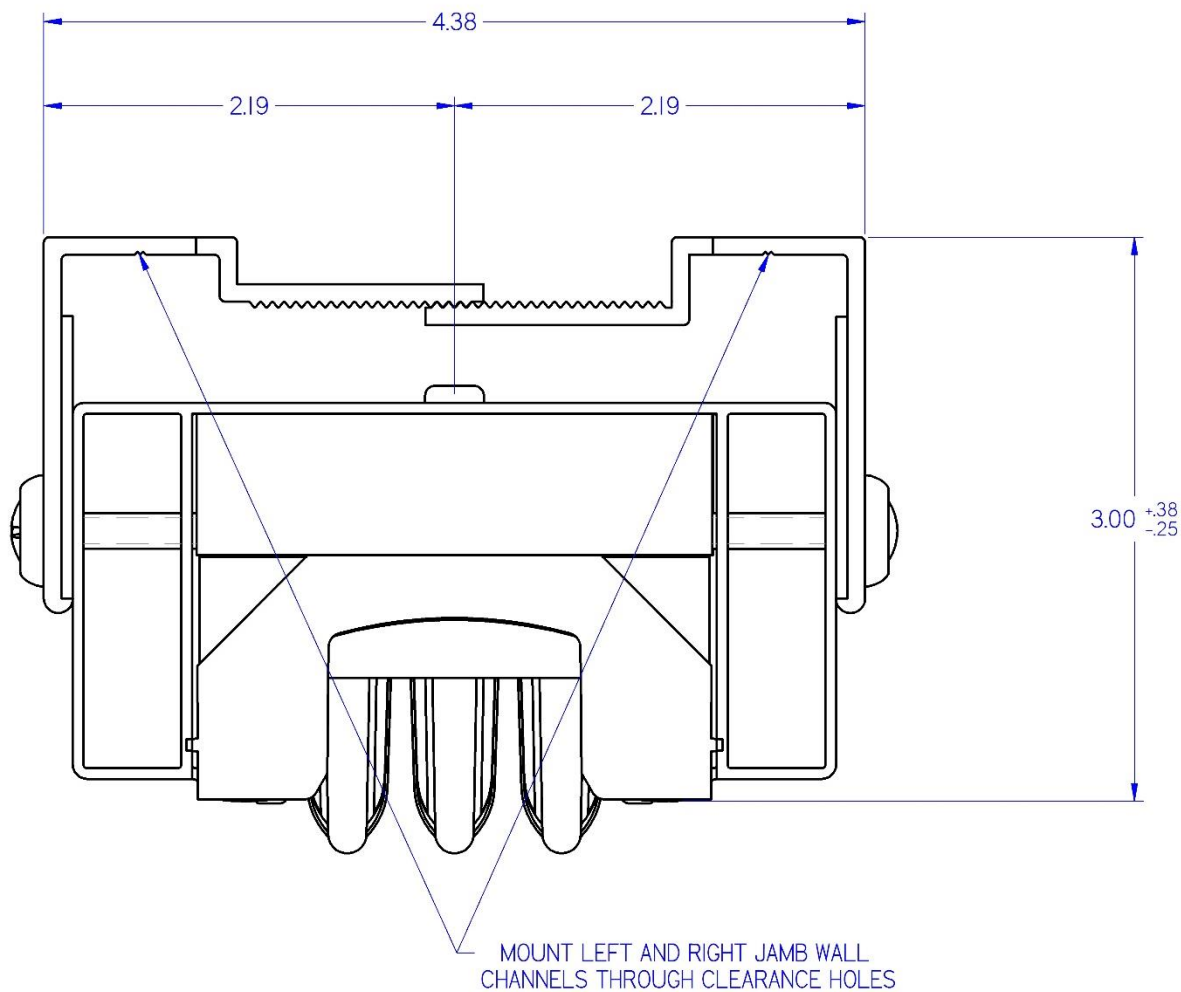


- 1. LEFT JAMB WALL CHANNEL
- 2. RIGHT JAMB WALL CHANNEL
- 3. FEMALE JAMB ASSEMBLY
- 4. FASTENERS
- 5. COVER RING

Matching RAL Paint Pen can be used on the fasteners & cover rings to match the jamb finish.

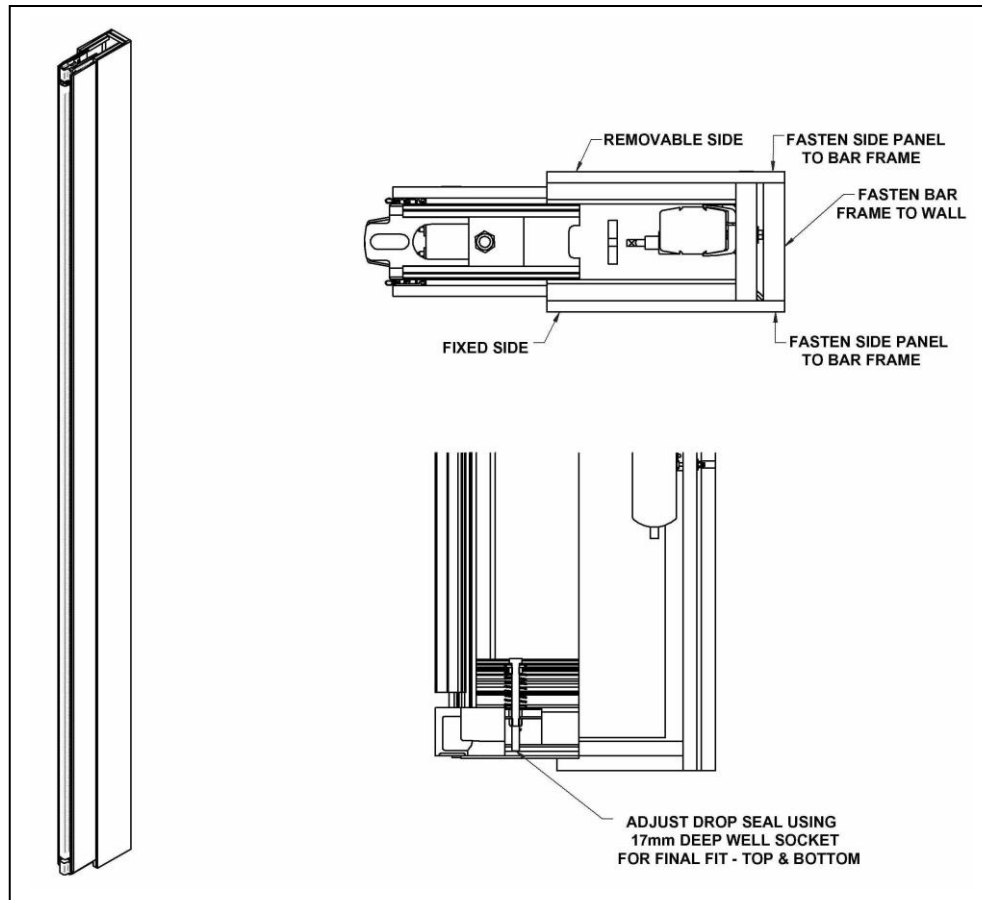
## Installation of Adjustable Lead Jamb - Continue

1. Using the center of the track as a guide and mark the location of the (1) Left & (2) Right Jamb Wall Channel.
2. Mount (1 & 2) Jamb Wall Channels to the existing wall.
3. Slide Female Jamb Assembly into Jamb Wall Channels. Place against the back edge.
4. Connect wires to top jamb male Contact Assembly. See Addendum 1 for wiring instruction.
5. If blinds are required, connect wires at bottom access hole to bottom jamb male Contact Assembly. See Addendum 1 for wiring instruction.
6. The Female Jamb Assembly should be secured with the provided fasteners (4) and Cover Ring (5) after adjustable depth is determined. See Detail below for adjustable range.



## Step 5- Closure Options – AWA, Telescopic Element (TE), & Glass Pivot Door

### Installation of the Adjustable Wall Abutment (AWA)



Listed are the steps to install the a Acousti-Clear Motorized® Adjustable Wall Abutment (AWA)

#### Installation steps:

7. Close the partition and align the panels
8. Center the Bar Frame and attach to the structural wall
9. Mount the AWA assembly onto the Bar Frame and dry fit
10. Check AWA seal assemblies (Top & Bottom) for proper fit
11. If necessary, remove the AWA assembly and adjust fit using a 17 mm deep well socket
12. Re-mount the AWA assembly and fasten to the Bar Frame

**Note: the back surface of the AWA may be scribe cut to match an irregular wall surface. (Up to ¼")**

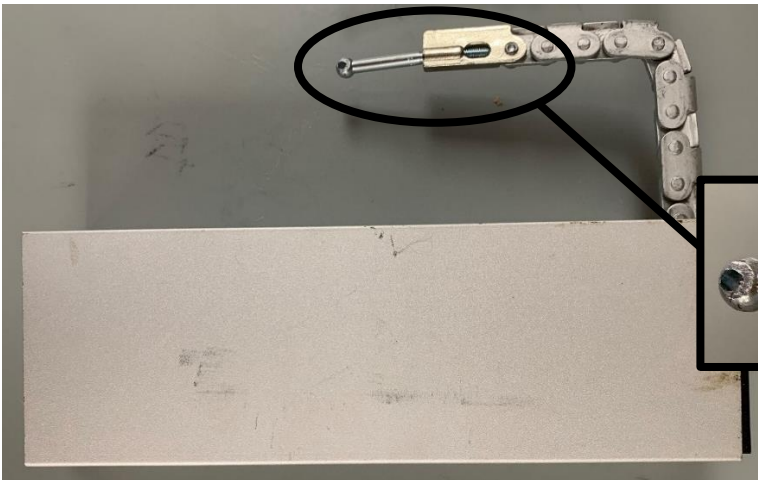
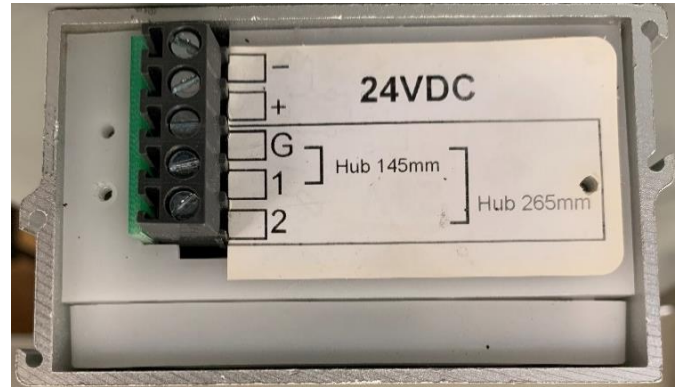
**The bottom of the AWA may be cut to accommodate variation at the job site.**

**The bottom stroke of the AWA is preset at the factory to match your layout.**

- **The AWA motors will stop when they reach their preset stroke or when the motor applies enough force to the adjacent panel.**

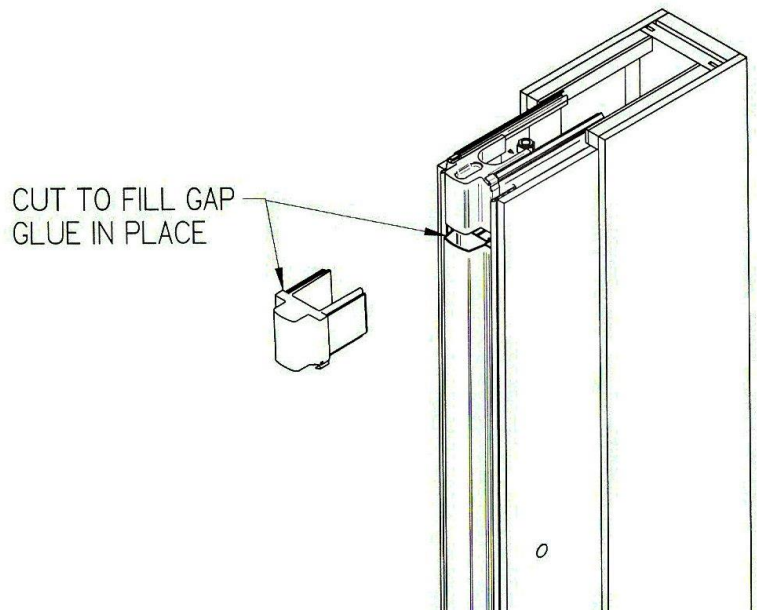
**AWA adjustment**

- The AWA has two setting options for the maximum stroke, 5.70”(145mm) and 10.43”(265mm). This is set in the factory to fit your layout but can be changed in the field by switching the wire in position 1 in the image to the right to position 2 or vice versa.
- If a more finite adjustment is needed the eye bolt on the end of the extension chain can be threaded in and out as needed.



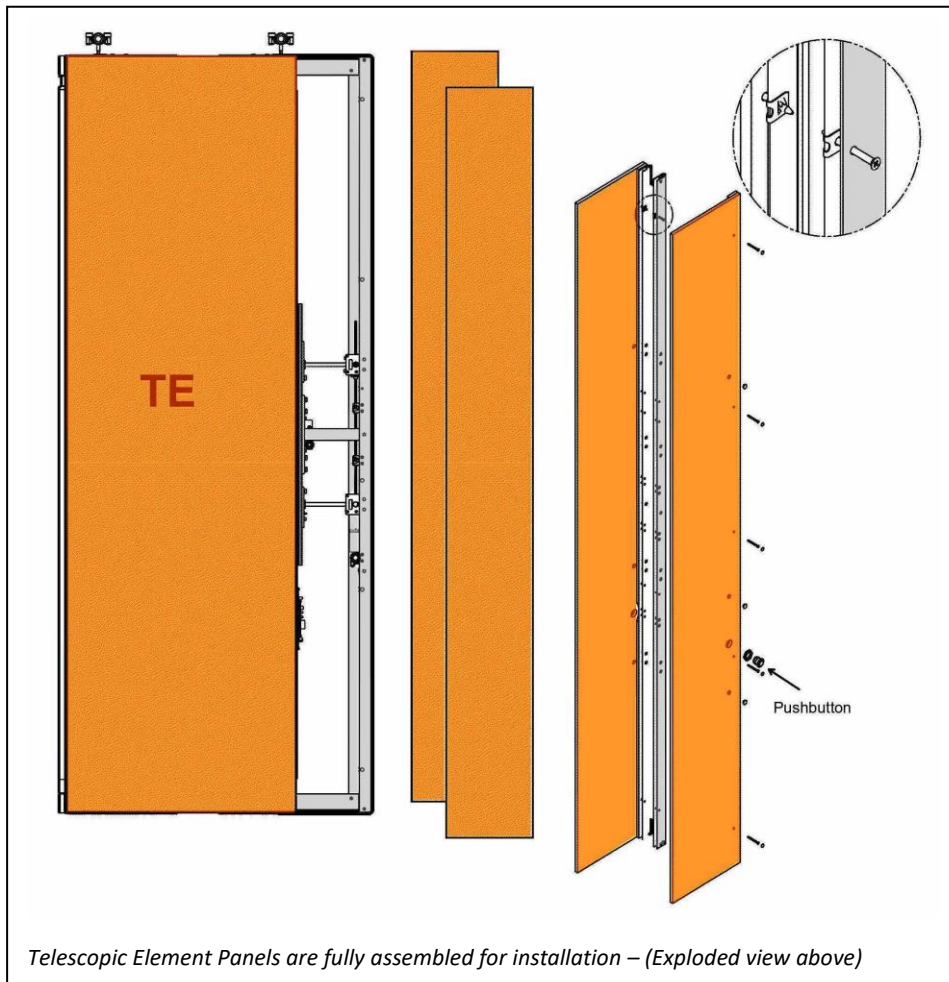
**AWA Spacer Installation**

1. Once the AWA has been installed, a visible gap will appear at the end between the aluminum profile and the top and bottom seals.
2. Close this gap using the two seals provided.
3. Measure and cut spacers to the precise size to fill the gaps.
4. Glue spacers into position to completely fill gaps. (A super glue type adhesive works best)



## Telescopic Element (TE) Closure

The Telescopic Element (TE) consists of a classic intermediate panel with an expandable nose.



**NOTE: See pages 41 & 42 for Operational Instructions.**

**Notes:**

1. TE2 140 Minimum Extended Width = 33.875"  
TE2 140 Maximum Extended Width = 58.25"
2. TE2 260 Minimum Extended Width = 33.675"  
TE2 200 Maximum Extended Width = 63.00"
3. TE2 140 Single Trolley Minimum Extended Width = 38.25"
4. TE2 140 Stroke is Variable from 3.50" to 5.50"  
TE2 260 Stroke is Variable from 8.25" to 10.25"

The drawing includes a side view of the jamb with dimensions: 4.25" width, 2.00" height, and .06" thickness. A top view shows a 5.00" wide jamb with six holes spaced 16" apart. A detail view shows the jamb being installed into a track, with 1/16" clearance on both sides and a 16" spacing between holes. The fabrication height is indicated as FH - .125".

**To Install the Trail Jamb:**

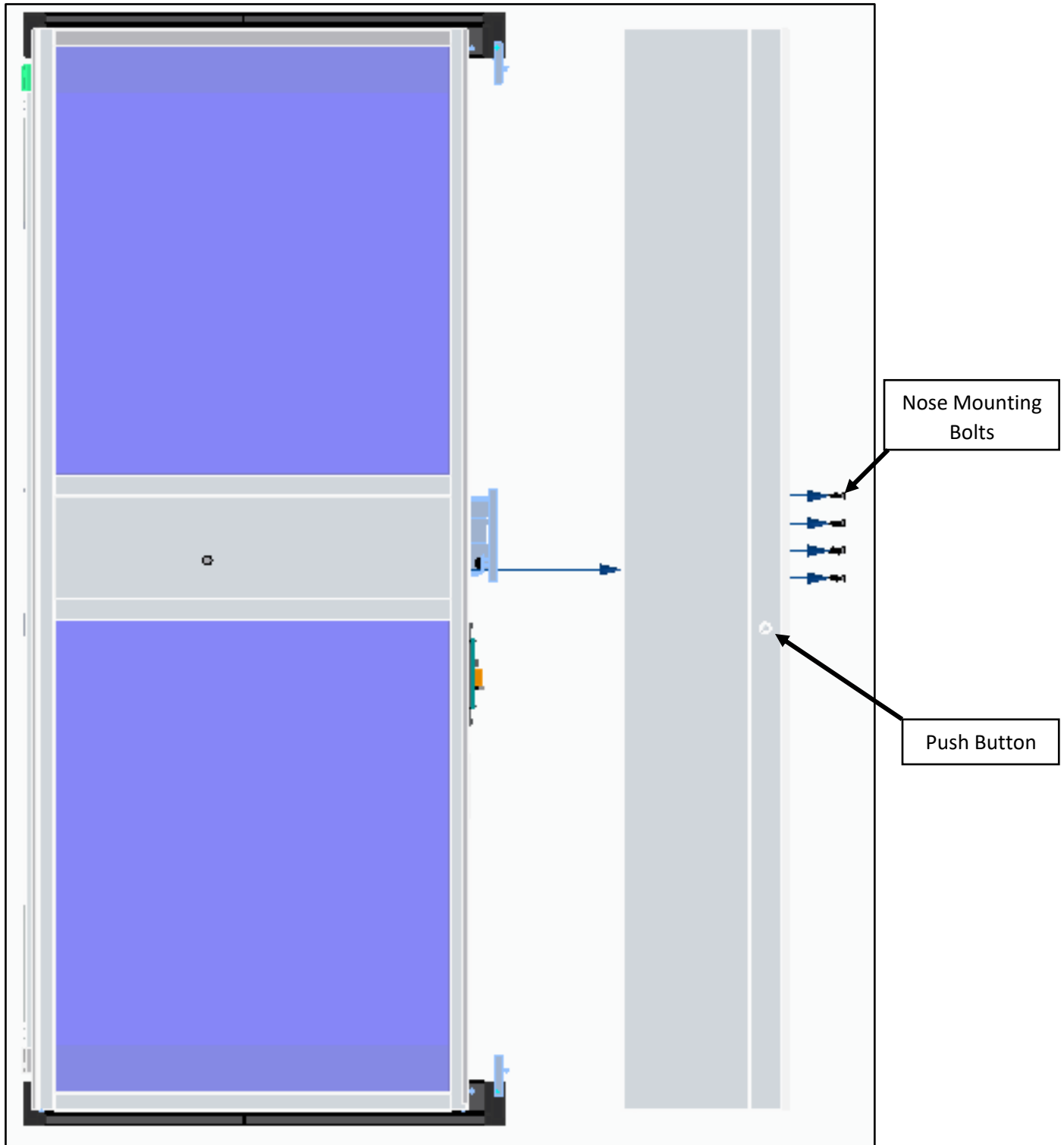
1. Using a level and a plumb line, center the jamb on the track.
2. Predrill the jamb using the proper clearance holes for the fastener used. (see detail above)
3. Space the holes approximately 16" apart and stagger them the length of the jamb.
4. Making sure the jamb is plumb, anchor the jamb to the wall using the proper screws.
5. Complete the install by using the six (6) screw covers provided.

**\* Eliminate Trail Jamb Option:**  
 The Trail Jamb may be eliminated if the existing wall is flat within 1/8" both horizontally and vertically and must comply with ASTM E557.

1	6	SCREW COVERS	
REV. A		EN 0817	APRD AB DATE 07/24/10
RELEASED:		TITLE	
TOLERANCE UNLESS OTHERWISE SPECIFIED		TWO PLACE	±.02
		THREE PLACE	±.010
		ANGLES	±1°
FINISH		SCALE	1/4
		EN	0817
MATERIAL		DATE 06/26/10	
TRAIL JAMB W/TE (EXPANDABLE PANEL)		ASSEMBLY, TRAIL JAMB	
		WA	MOVEO
		PURCHASED	MANUFACTURED
		DRAWN AB	EN

## Glass Expandable Closure

The glass expandable panel is shipped assembled and consists of a glass intermediate panel with an expandable nose attached to the trail end. The glass expandable minimum width is of 26 ¾" with two set stroke options of 7 ¾" and 10".



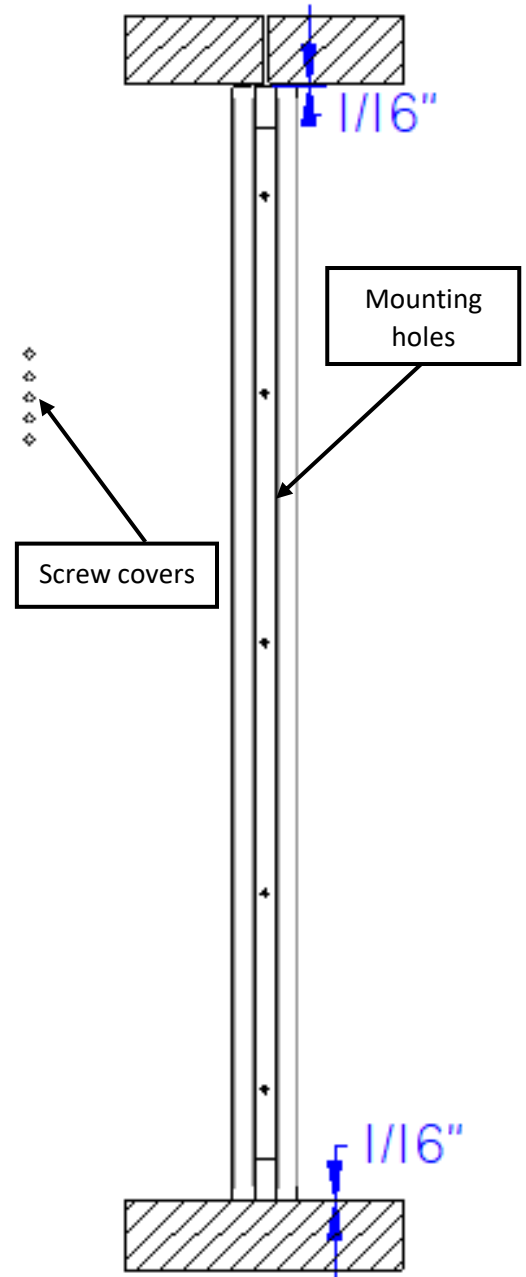
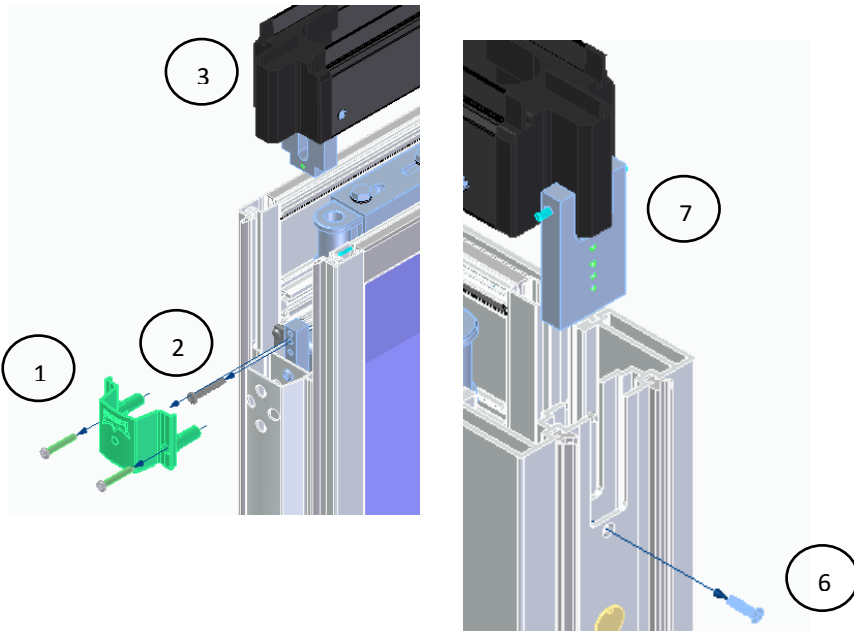
## Trail Jamb Installation

1. Using a level and plumb line, center the jamb on the track.
2. Mount the jamb to the wall, fasteners not included.
3. Use the provided hold covers to cover the mounting holes.

## Glass Expandable Adjustable Fixed Sweeps

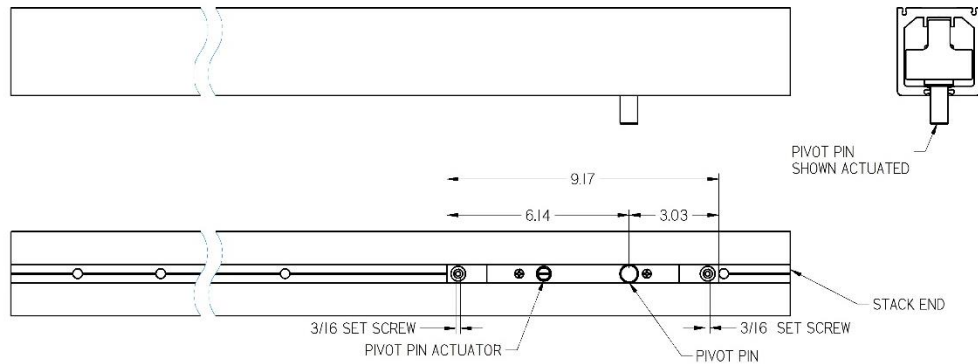
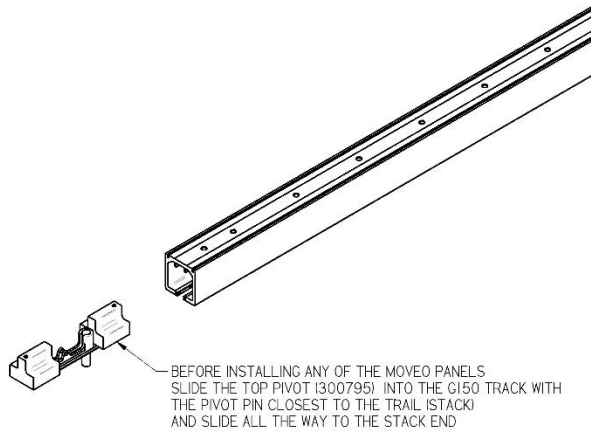
The glass expandable panel has adjustable fixed top and bottom seals. Follow instructions below to adjust these sweeps, Step numbers correspond the labelled images below.

1. Start on the lead side of the panel. Remove the lead endcap.
2. Remove lead sweep mounting screw.
3. slide the lead side of the sweep to the desired position. There are 3 pre-set heights choices.
4. replace the mounting screw in the new position.
5. Replace the endcap and move to the trail side of the panel.
6. Remove trail sweep mounting screw.
7. Slide trail end of the sweep to the desired pre-set choices.
8. Replace the trail sweep mounting screw.



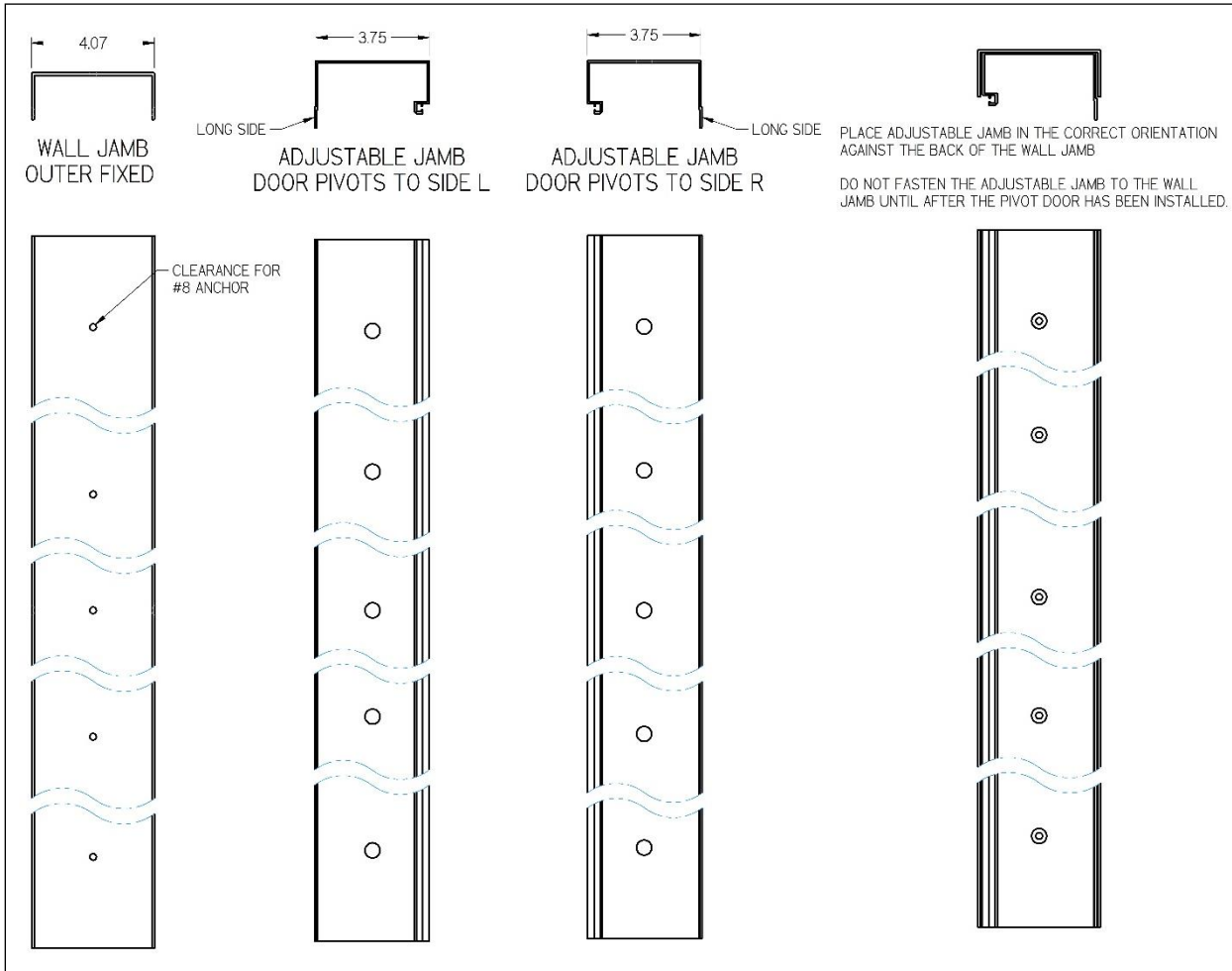
## Installation of the Glass Pivot Door

- A. Install the Top Pivot by sliding the assembly into the G150 Track. This must be done prior to installing any of the Acousti-Clear Motorized Panels.**



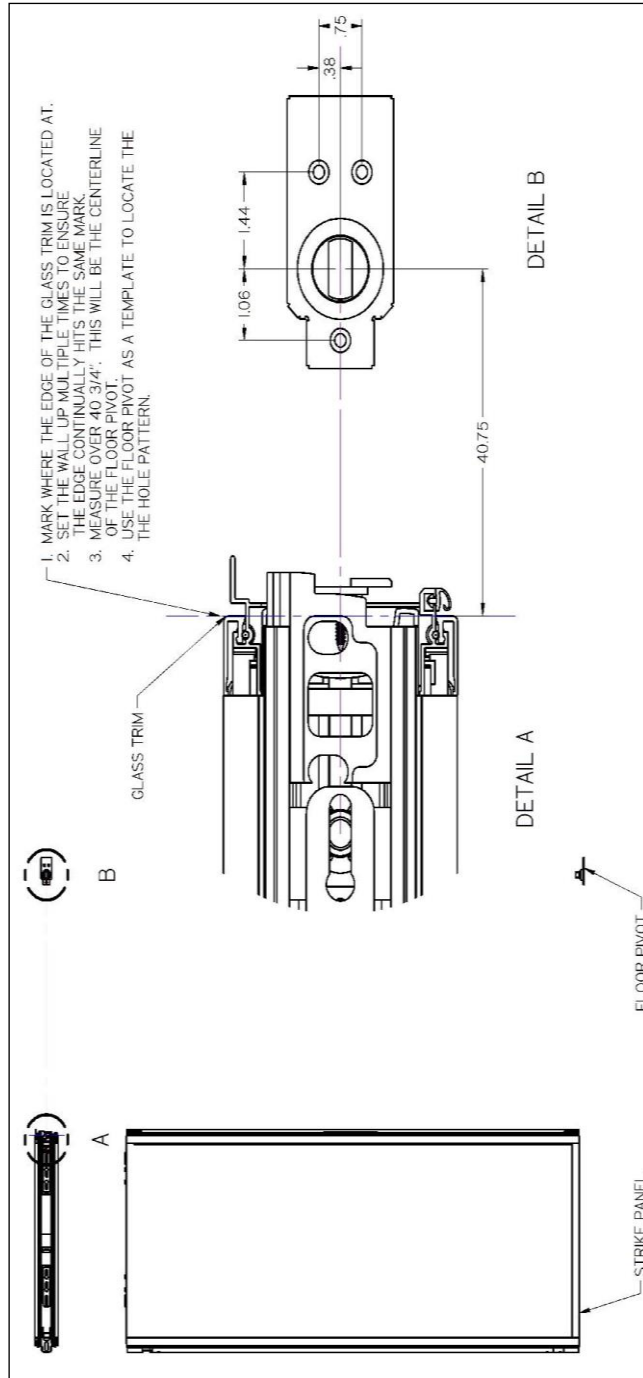
**B. Install the Adjustable Jamb**

- a. Attach the Wall Jamb to the fixed wall. Clearance holes for #8 Anchors are provided on the centerline of the extrusion.
- b. Place the Adjustable Jamb in the correct orientation against the back of the Wall Jamb. **DO NOT FASTEN THE ADJUSTABLE JAMB TO THE WALL JAMB UNTIL AFTER THE PIVOT DOOR HAS BEEN INSTALLED.**



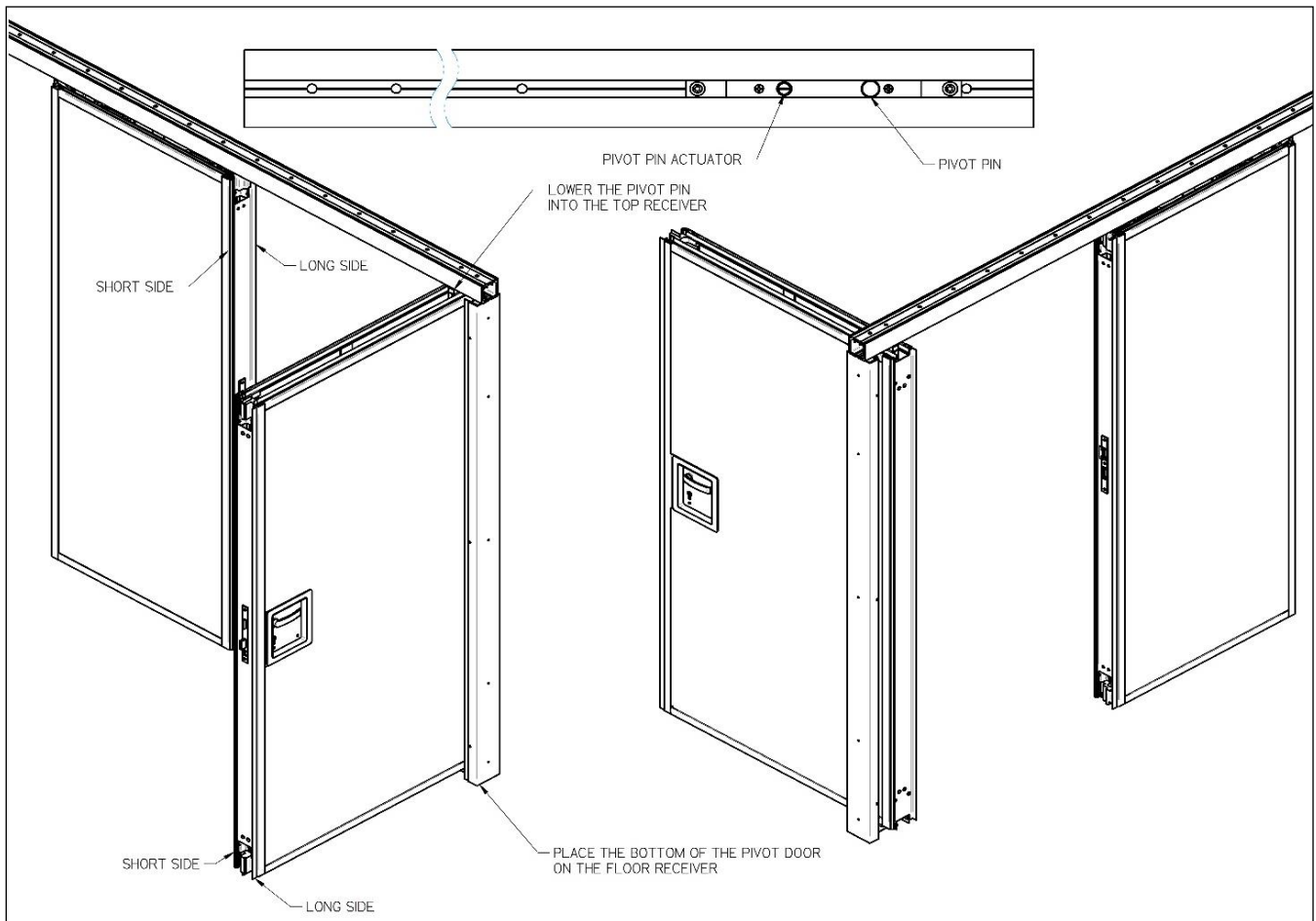
**C. Installing the Floor Pivot**

- a. Mark the Edge of the Glass Trim.
- b. Set the Wall up multiple times to ensure the glass edge continually hits the same mark.
- c. Measure over 40 3/4" to mark the centerline of the Floor Pivot.
- d. Use the Floor Pivot as a guide to mark the mounting hole locations.
- e. Mount the Pivot with the provided hardware.

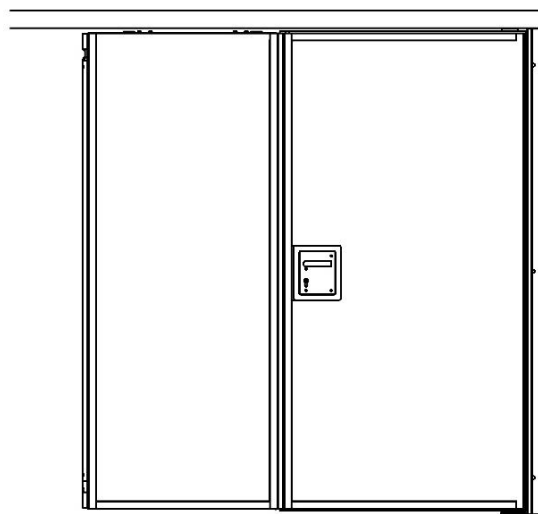
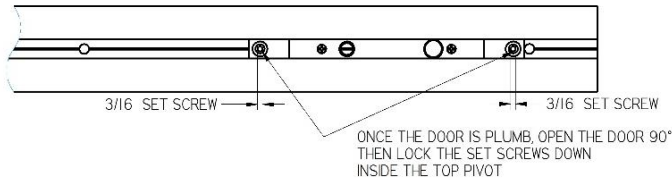


**D. Installing the Pivot Door**

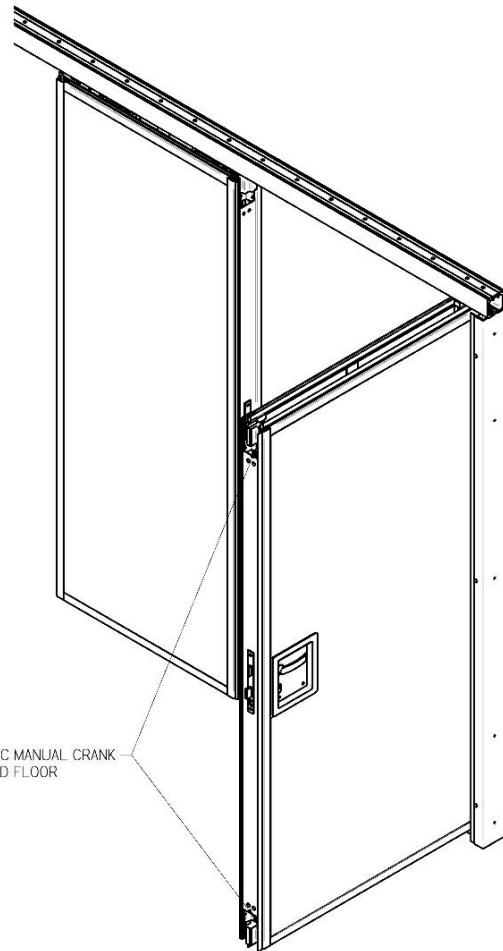
- a. The Pivot Door, Adjacent Panel, and Adjustable Trail Jamb all have similar extrusions with a Long Side and Short Side. The Pivot Door should be installed where the short side passes by the Adjacent Panel short side and seals against the Adjacent Panel long side.
- b. The Centerline of the Floor Pivot should align with the Top Pivot Pin. Slide the Top Pivot over and lock the set screws down.
- c. The Floor Pivot fits into a pivot receiver mounted to the bottom of the Pivot Door. Carefully align the two and stand the Pivot Door up.
- d. Lower the Pivot Pin into the Block located in the Door by turning the Pivot Pin Actuator with a flat head screw driver.



- e. To Plumb the Door, open the Door 90°, raise the Pivot Pin out of the Pivot Block, and slide the Top Pivot accordingly. Once the Door is plumb, lock the 4mm Set Screws down. **Note the Door must be supported while the Pin is out of the Pivot Block.**
- f. Actuate the Top and Bottom Seals by using the Comfortronics Manual Crank. Crank the Drop Seals until the seals brush against the track and floor.

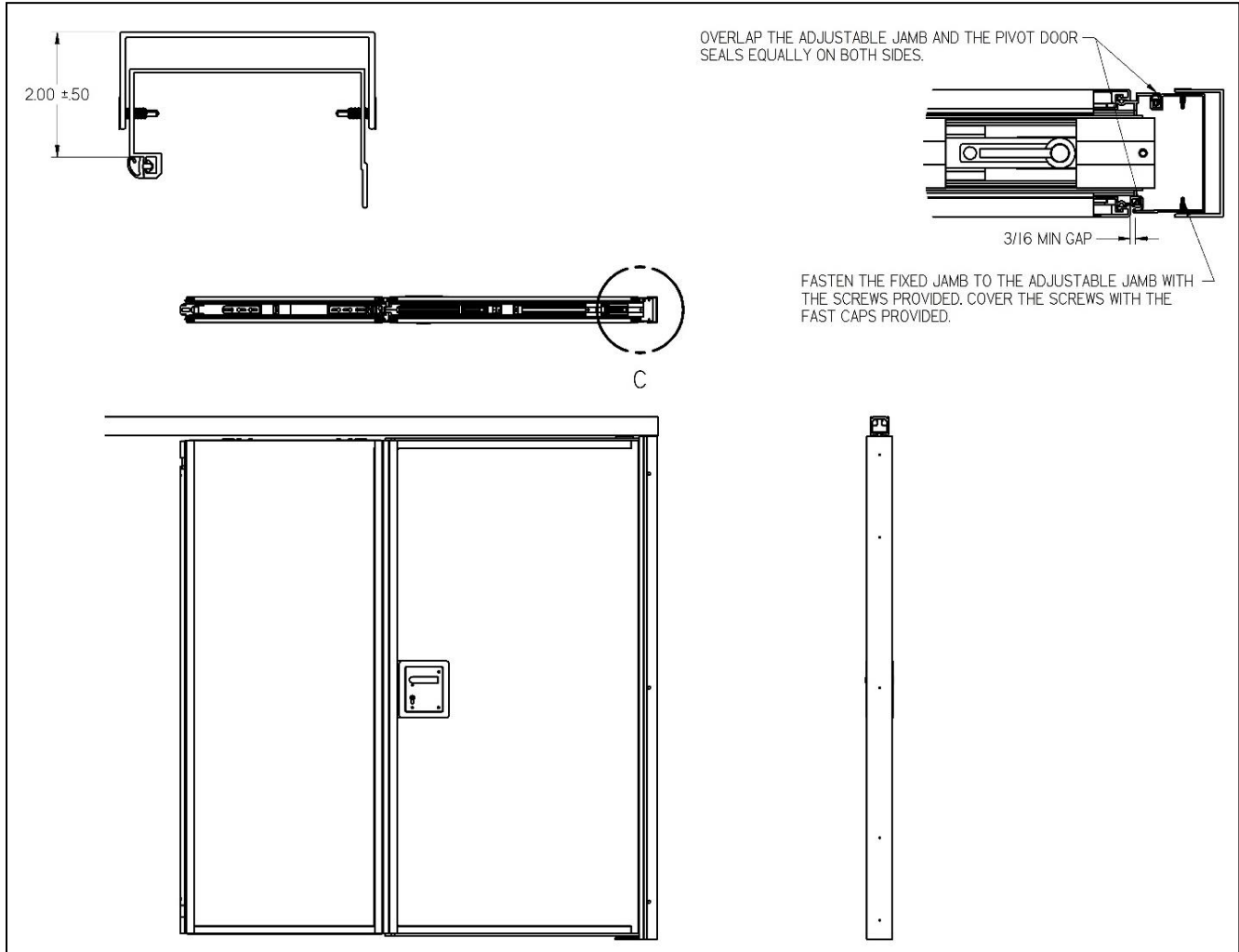


CRANK THE DROP SEALS WITH THE COMFORTRONIC MANUAL CRANK UNTIL THE SEALS BRUSH AGAINST THE TRACK AND FLOOR



**E. Finishing the Adjustable Jamb Installation**

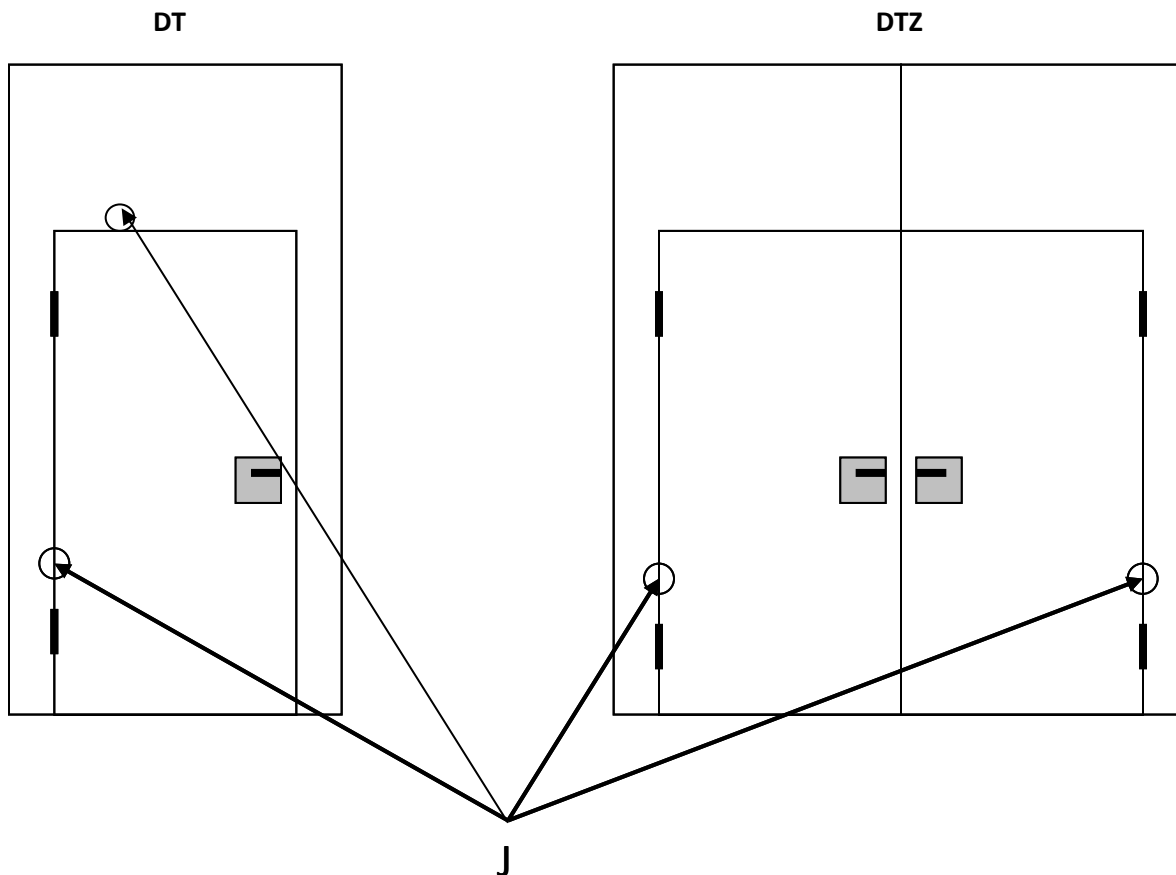
- a. Overlap the Adjustable Jamb Seal and the Pivot Door Seal equally on both sides. You should have a 3/16" minimum gap.
- b. Fasten the Fixed Wall Jamb to the Adjustable Jamb by using the screws provided.
- c. Cover the Flat Head Screws with the Fast Caps provided.



## Step 6- Pass Door Installation

### Installation of Pass doors, Single and Double leaf (DT and DTZ)

Pass doors arrive pre-assembled. Fine adjustment may be required as shown below.



### ***Fine-adjustment of the doors***

The adjusting screw (J) is (located in the top hole) inside the side door frame on the hinge side (leaf needs to be opened). Using crank handle, turn the screw clockwise or counter-clockwise to adjust the angular position of the door leaf.

### Pass Door Floor Socket



Floor socket

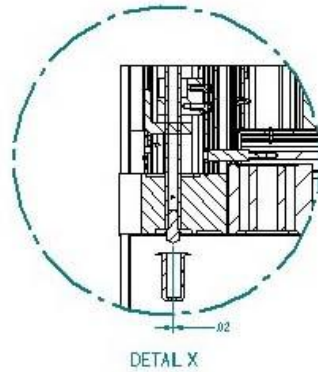
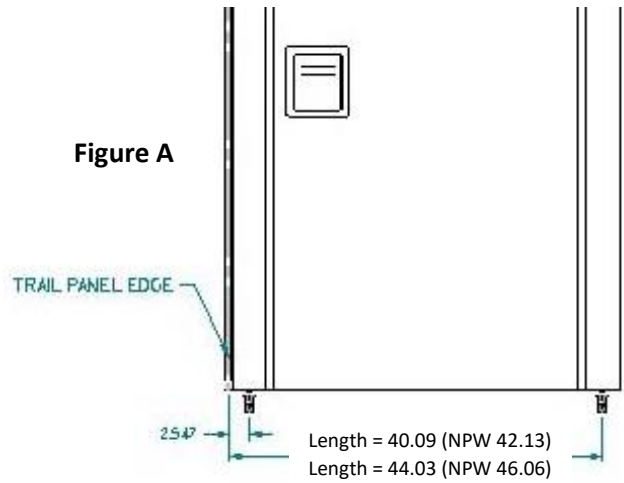


Figure A

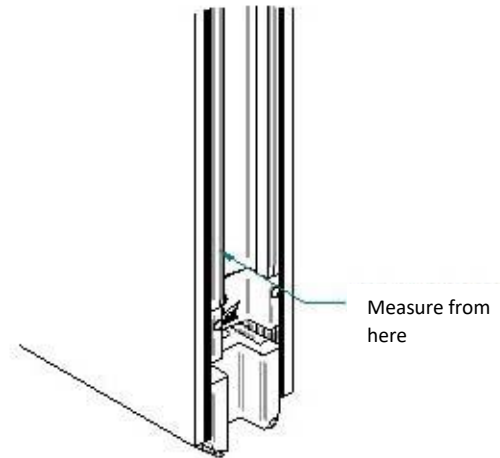


### Floor Socket Installation for Pass Doors

Move the panels into their respective positions for closing the partition.

Measure 2-9/16" (2.55 inches) from the previous panel's vertical rail. For the second hole match NPW from Figure A above and measure matching length from previous panels' vertical rail.

Drill 1-inch holes in diameter, and using grout, insert floor socket.

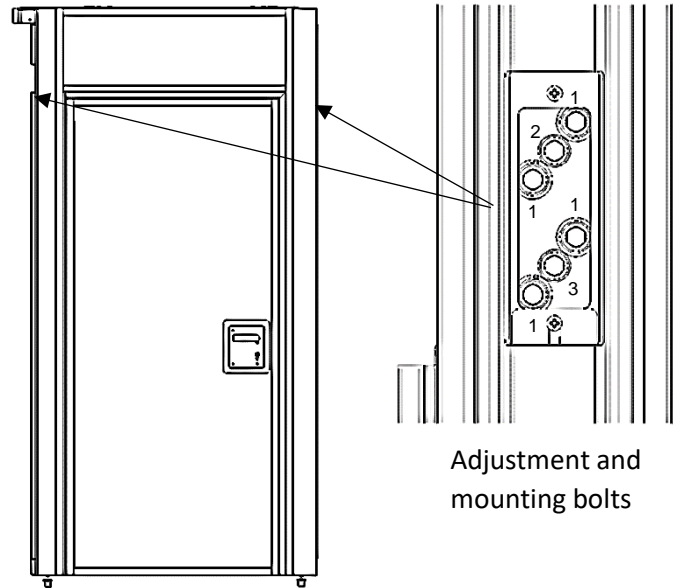


## Installation of Single Glass Pass Door

### #1. Leg Adjustment

If the panel legs do not appear square the legs can be adjusted to square up the panel.

1. Remove adjustment hatch covers
2. Begin by loosening the leg mounting bolts marked by the number 1.
3. If the bottom of the leg needs moved inward back out the lower adjustment bolt, marked by number 3, and thread the upper adjustment bolt, marked by number 2, in until the leg is in its desired position.
4. If the bottom of the leg needs to move outward do the same but back the upper bolt, item 2, out and thread in the lower bolt, item 3, to the desired position.
5. Once the leg is adjusted hand tighten all the mounting bolts and the secondary adjustment bolt. Then tighten down the mounting bolts to 45 ft/lbs.
6. Repeat these steps for both sides until they are square with the door.



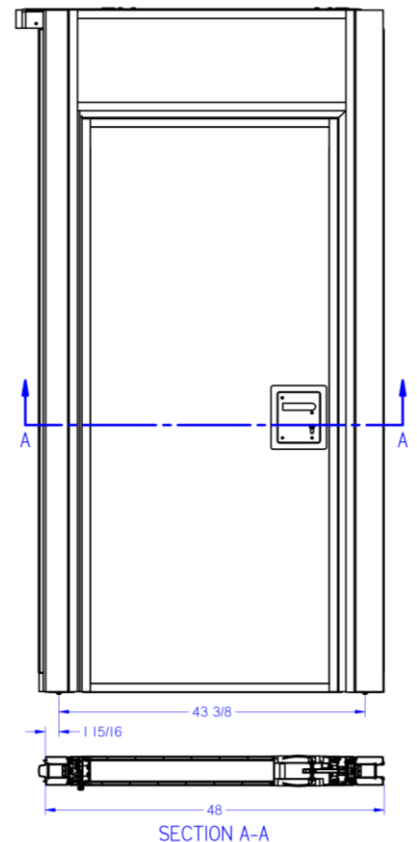
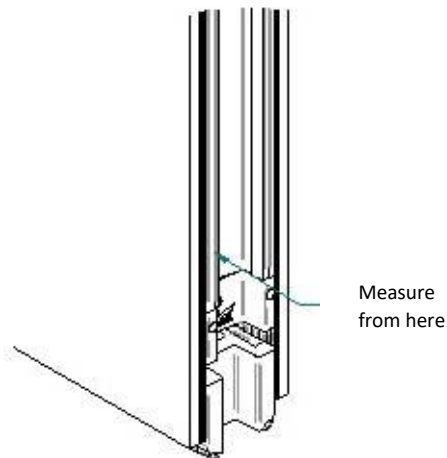
#2. Prior to opening the door, Legs should be adjusted, and the two adjacent panels **must** be in place.

#3. Install floor sockets.

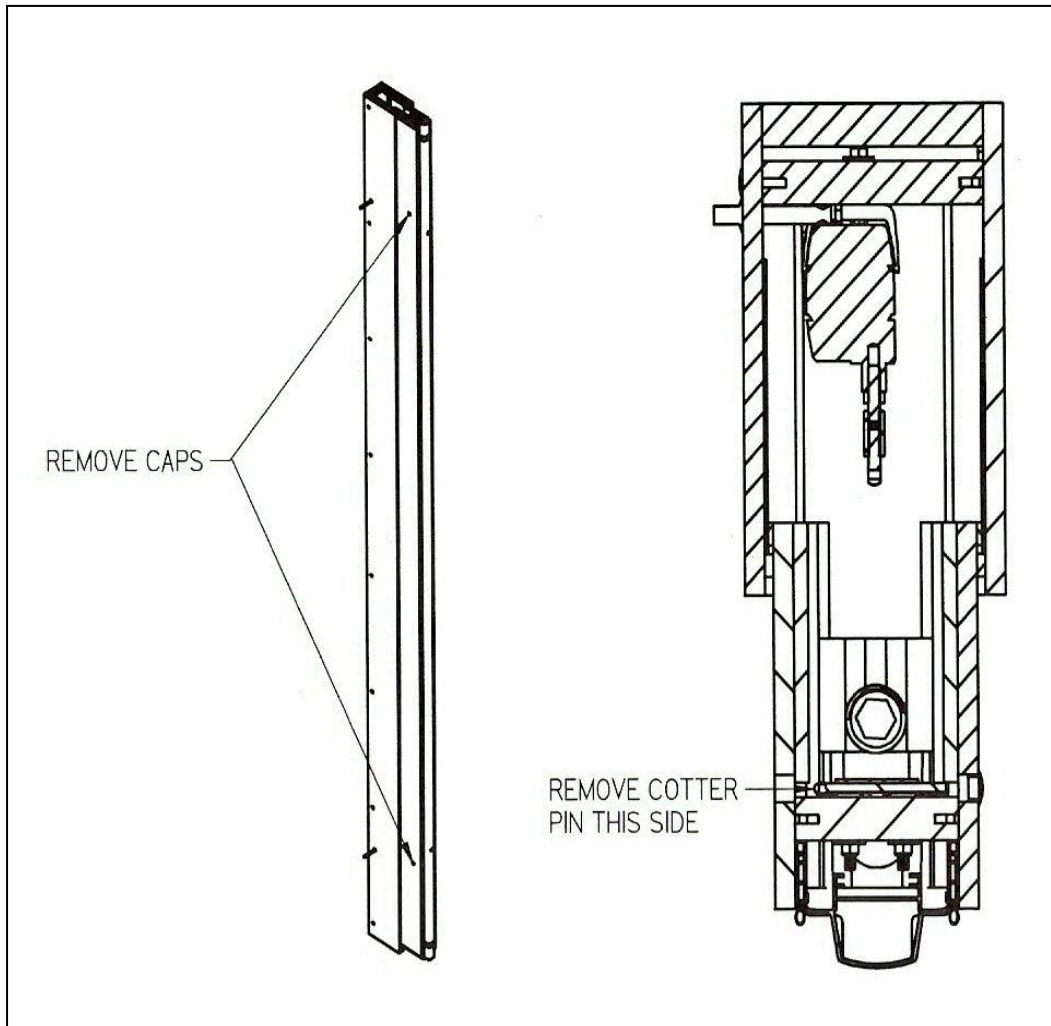
### Floor Socket Installation for Pass Doors

Measure 1-15/16" (1.94 inches) from the previous panel's vertical rail. For the second hole measure over 43-3/8" (43.38 inches) from the previous panel's vertical rail.

Drill 1-inch holes in diameter, and using grout, insert floor socket.



## Emergency Release of the AWA Nose



**When cotter pins are removed, manually retract nose by pushing inward with palms.**

**Note: Refer to Pages 26 & 27 for stroke adjustment instructions.**

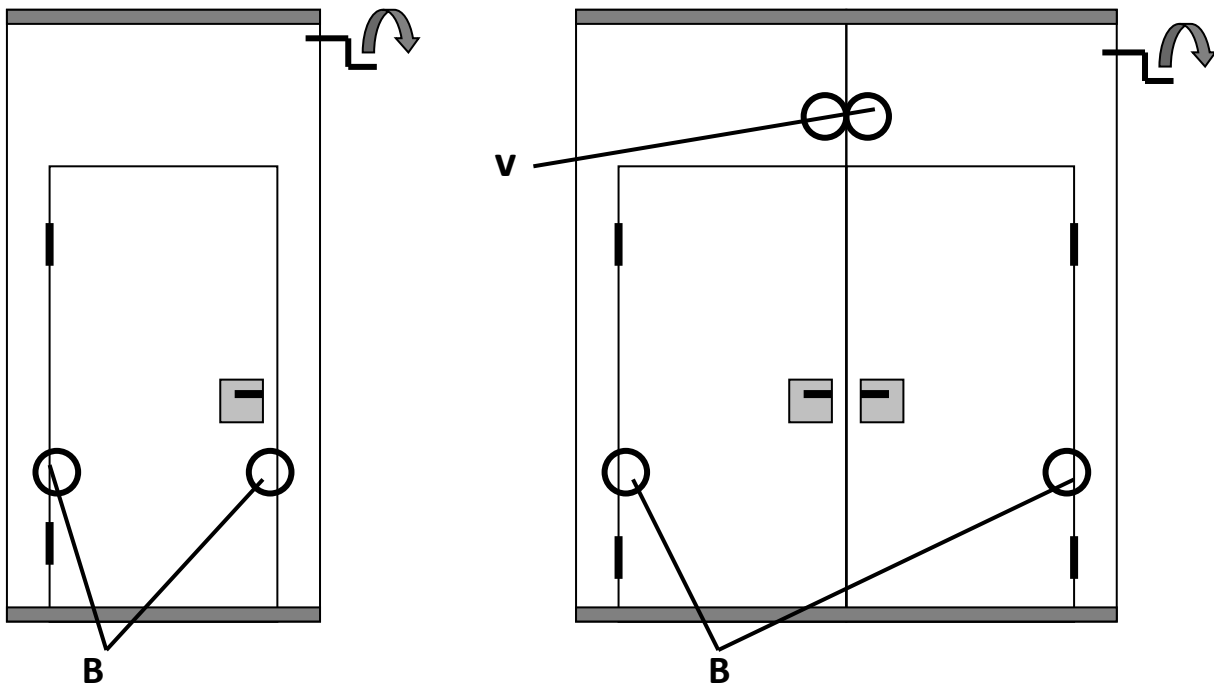
## Emergency Release of the Pass Door Panels

### Single-leaf Pass Door DT

1. Release pass door panel at the top as described for Classic panel
2. Open door leaf 90°
3. **Always** release the end in direction to the concave wall abutment first!
4. The emergency crank insertion hole (B) is located approx. 2 ft. from the bottom of the frame. Turn clockwise. (Bottom Hole)
5. Then release the other end. **Caution!** Secure the pass door panel to prevent it tilting sideways (door leaf could impact on floor.)
6. Close the door leaf and lock with the key.

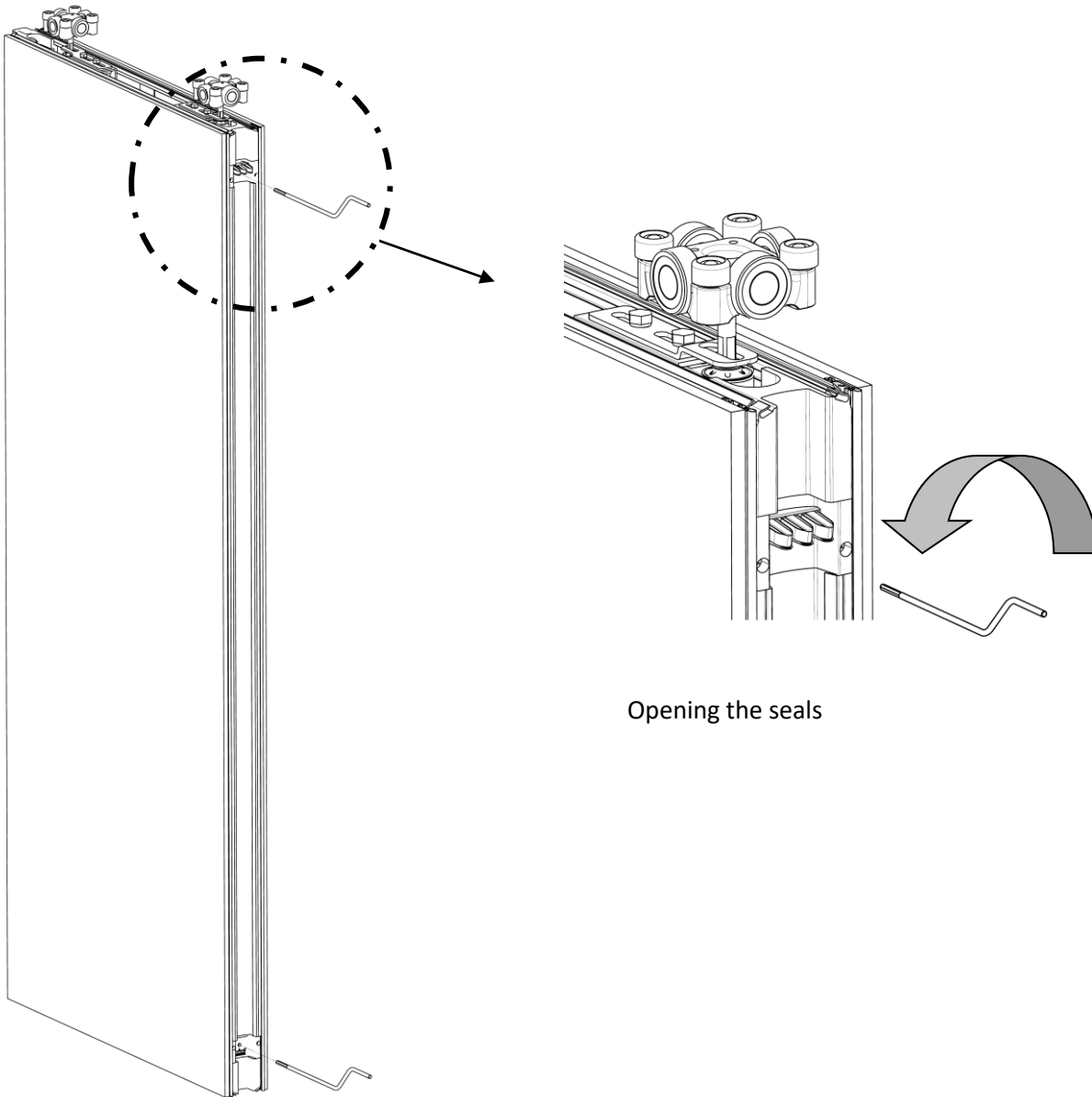
### Double-leaf Pass Door DTZ

1. Release pass door panel at the top as described for Classic panel
2. Unlock the two door leaves (life leaf / dead leaf) and open 90°.
3. Release as described for the DT panel above by undoing locking bolts (B) in the frame sides.
4. Then close door leaves and separate DTZ panel from the following panel. Approximately 1 m (3-feet).
5. Secure the DTZ panel against opening by engaging locking devices (V) in the transom (approx. 15 cm from the bottom edge).
6. Release the following panel (life leaf / dead leaf) in the frame area and then secure against opening in the transom.
7. Only then should the DTZ panel be disconnected from the following panel



**CAUTION:** When manually opening partitions with DT pass door panels, first release the sealing strips/corner seals of the side posts of the DT pass door panel at the bottom before moving the panels away!!

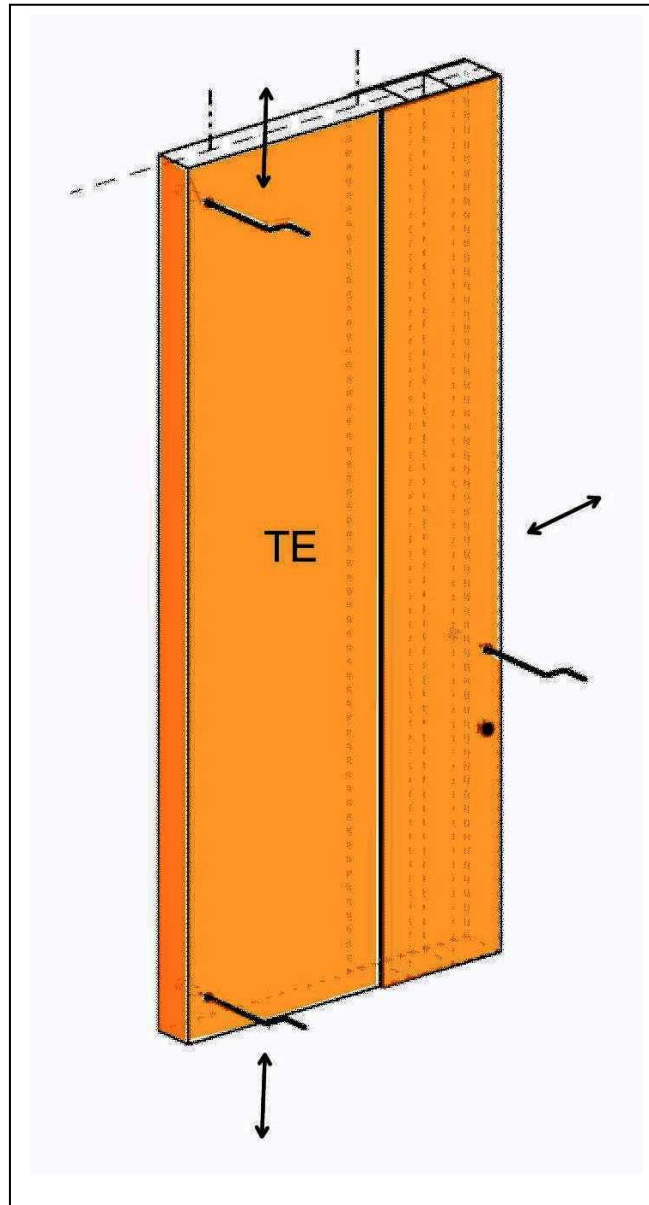
## Emergency Operation Cranking Locations for Acousti-Clear Motorized® Panels



Opening the seals

## Emergency Release Telescopic Element (TE) Panel

---



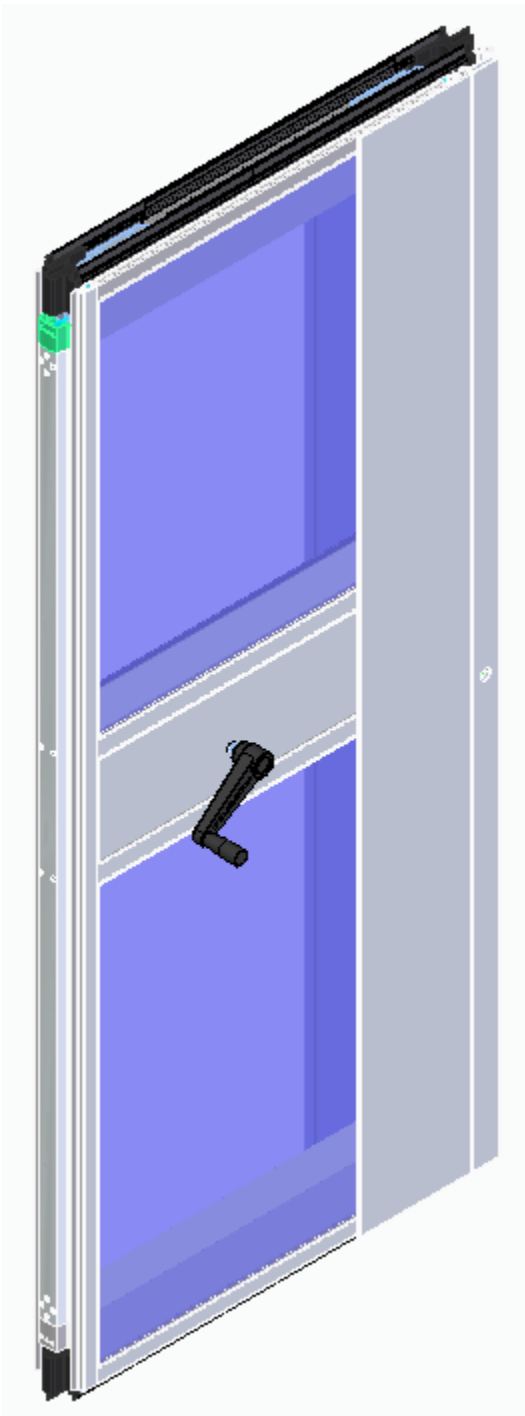
Above detail show the emergency crank operating points for the TE (telescopic element) panel. The emergency operating points are located on both sides of the TE panel.

Crank Operation Sequence:

1. Retract top seal.
2. Retract Bottom Seal.
3. Retract Expandable nose.

## Emergency Release Glass Expandable Panel

---

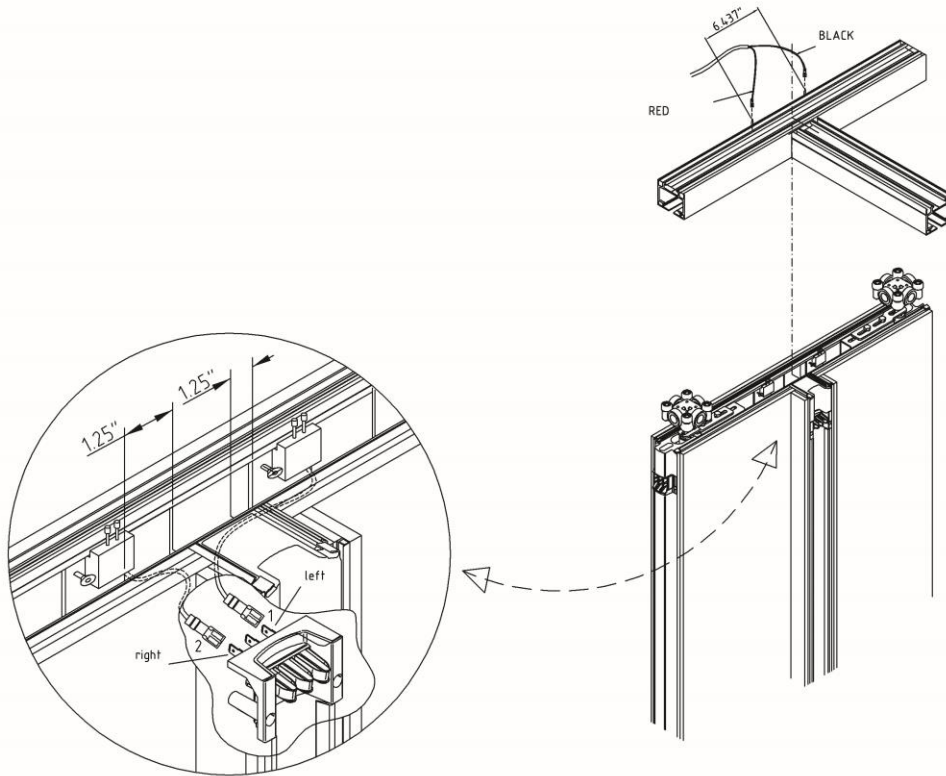


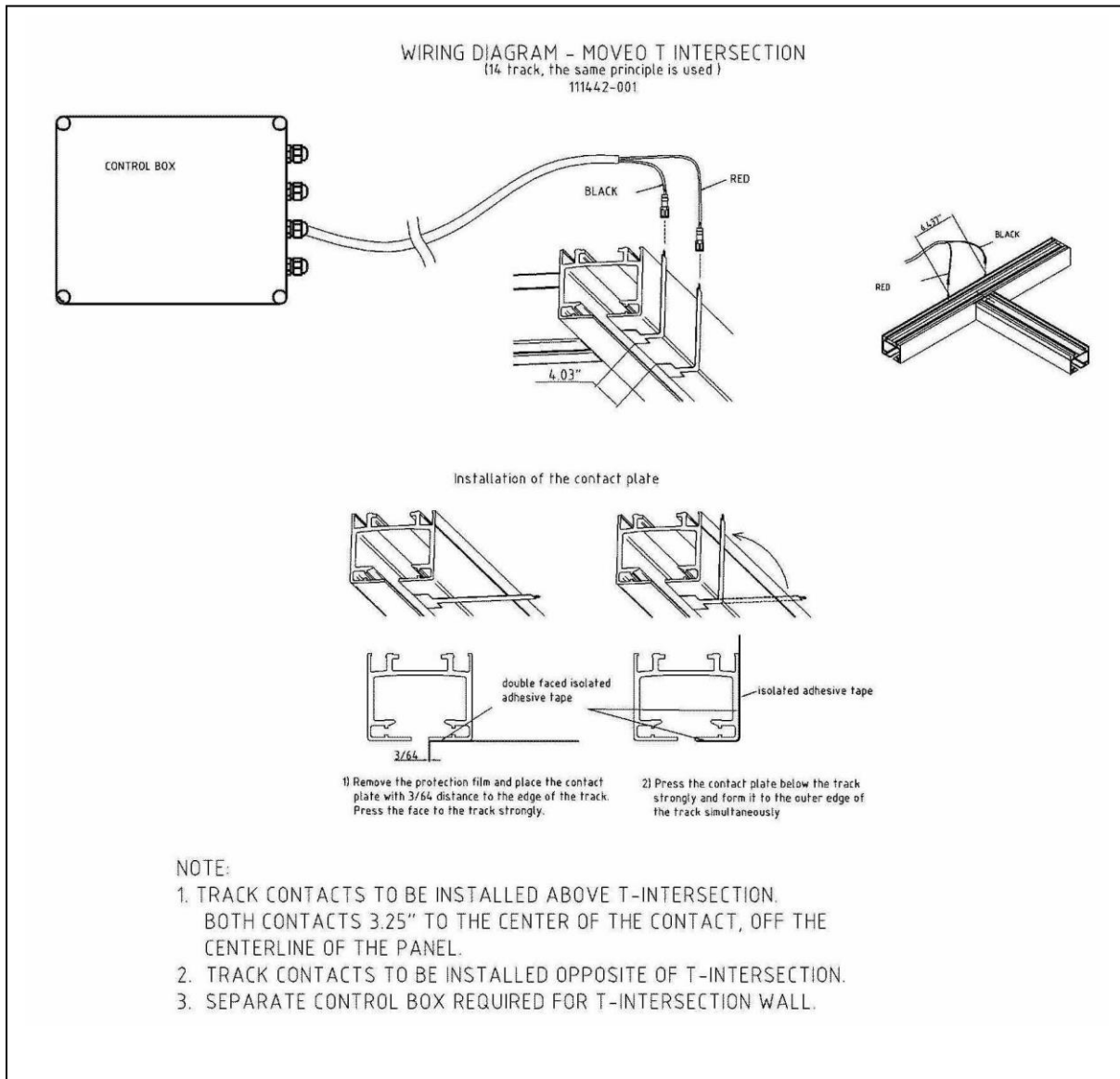
The detail to the left shows the emergency crank operating point for the glass expandable panel. The emergency operating point is located on one side of the panel behind the hole cover.

## Step 7- Classic & Glass Panel T- Intersections

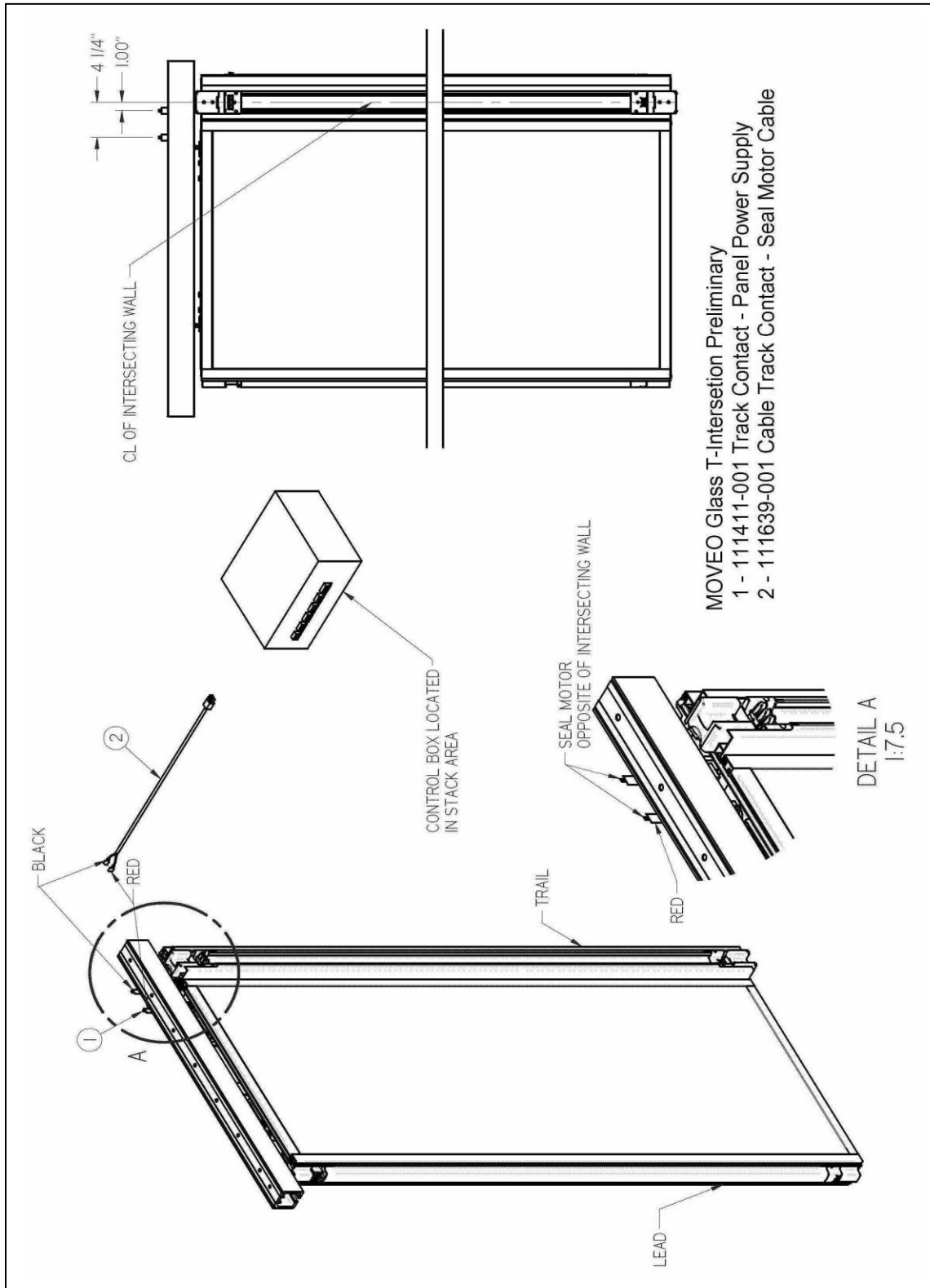
### Classic Panel T-Intersection

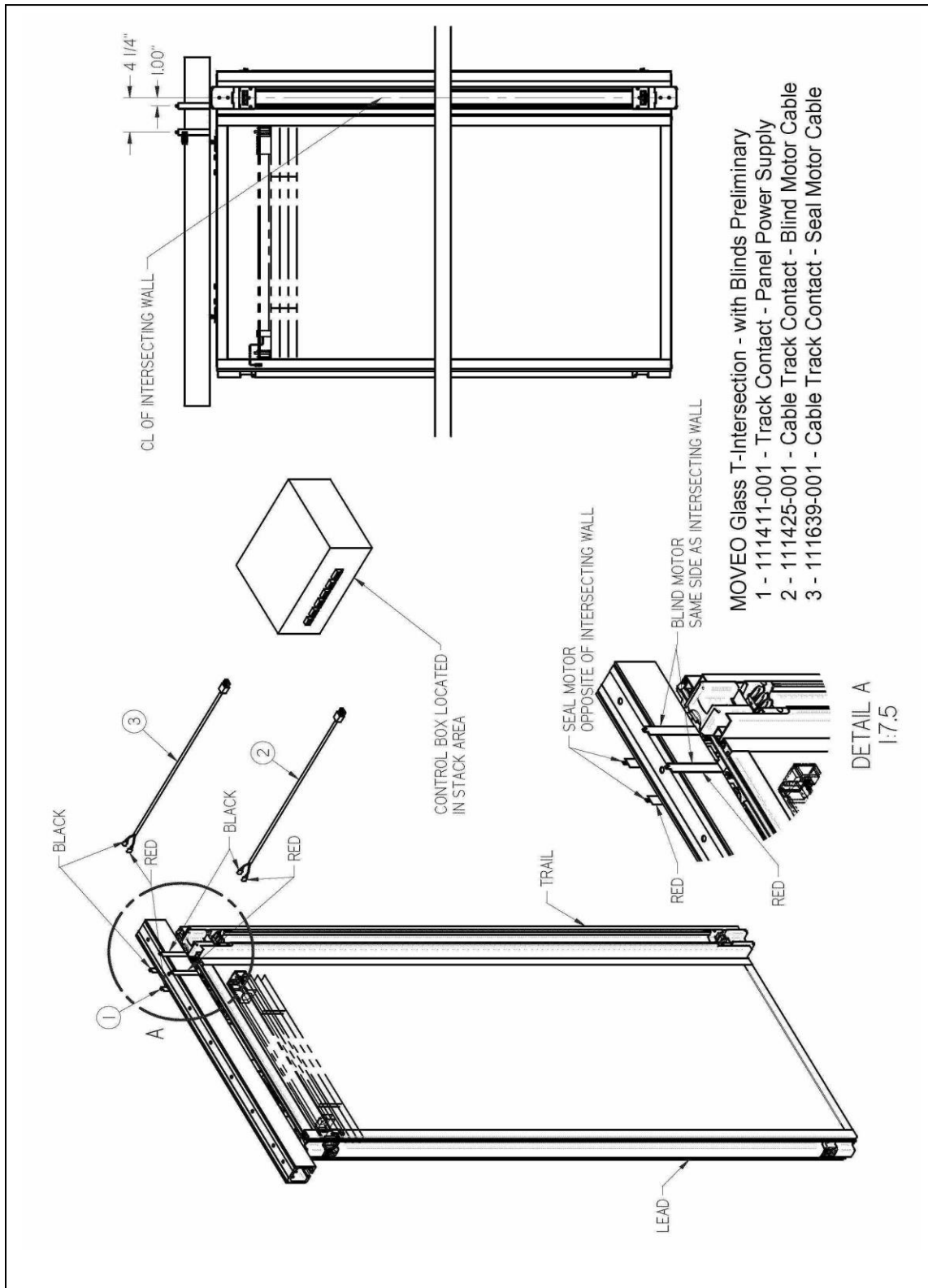
Track contacts to be installed above T-Intersection. Both contacts 3 1/4-inches to the edge of the contact off the centerline of the panel (see addendum I).

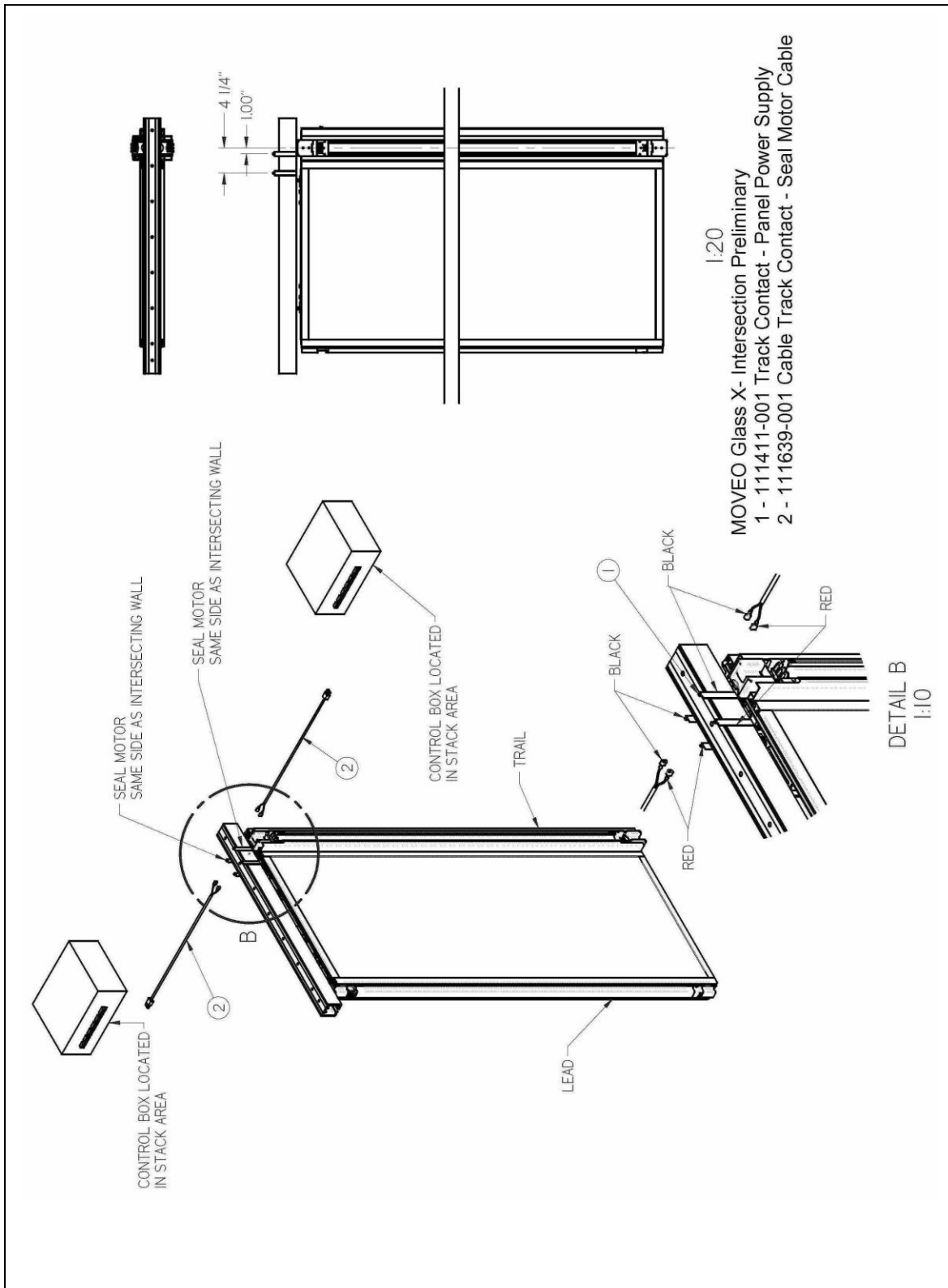


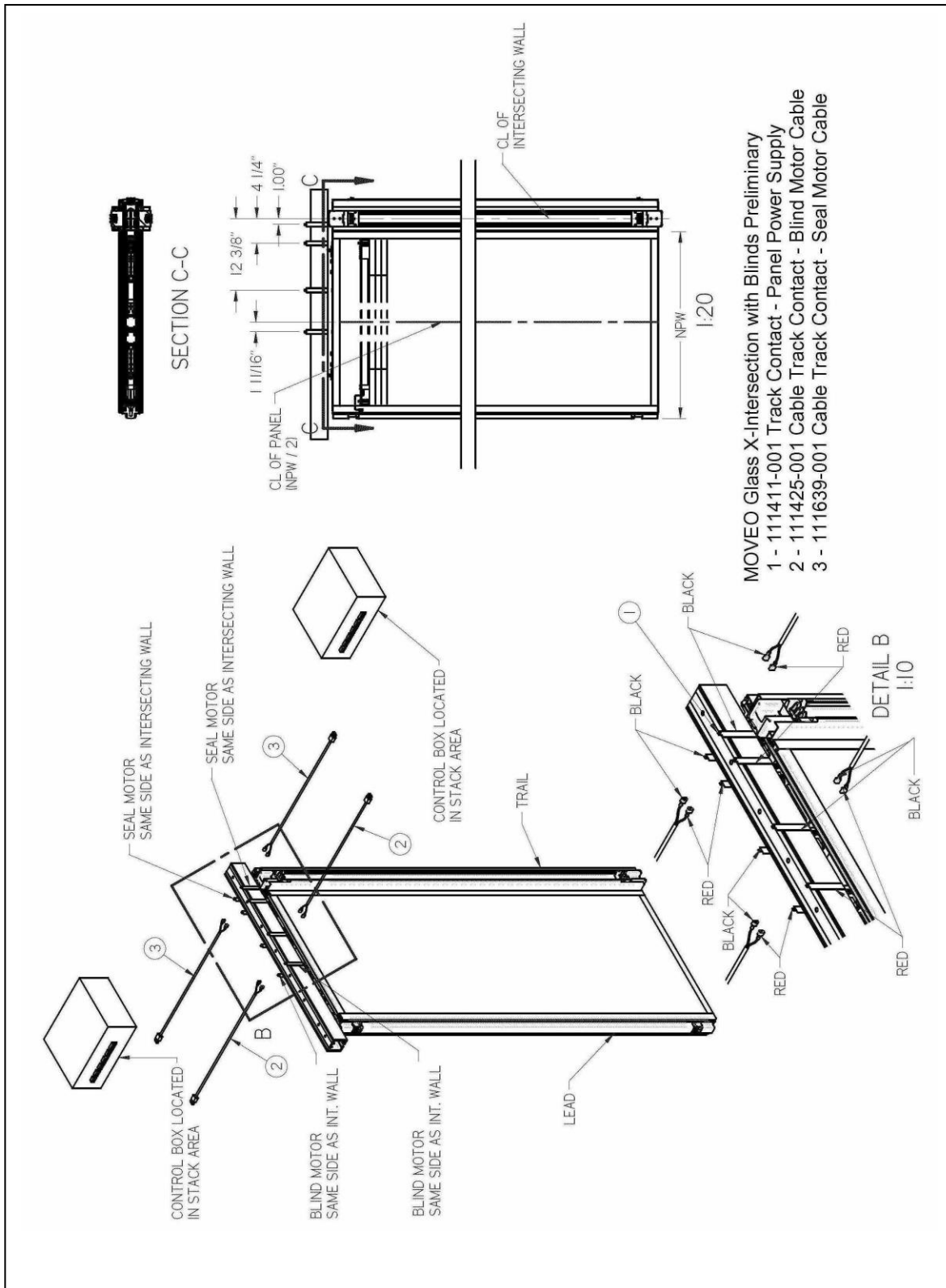


### Glass Panel T- Intersections









## Step 8 - ComforTronic Actuators

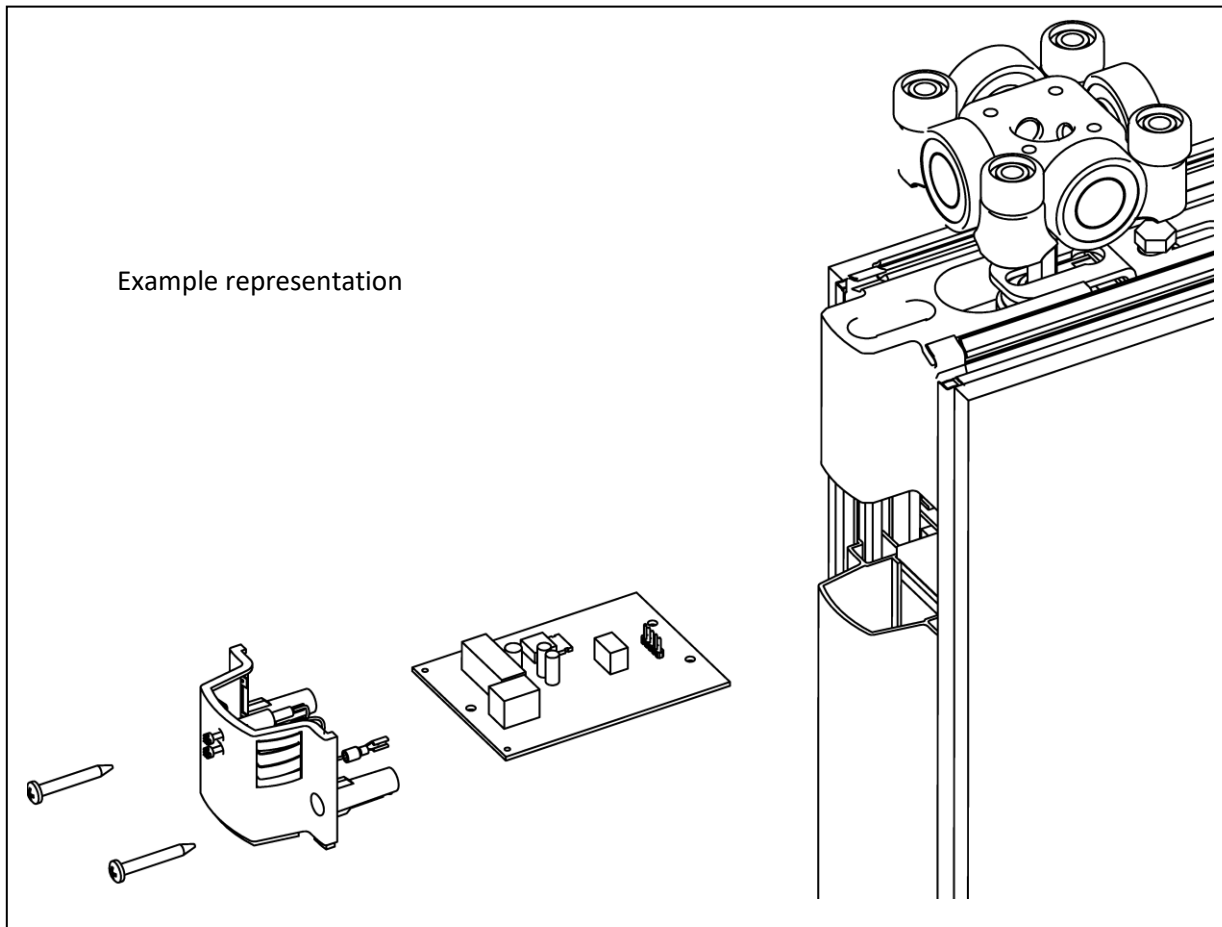
### Removing and re-fitting the ComforTronic® actuators for the top and bottom seals

Using the emergency crank, retract the seals to release the panels and then separate the panels.

Unscrew and remove the contact cap on the convex side.

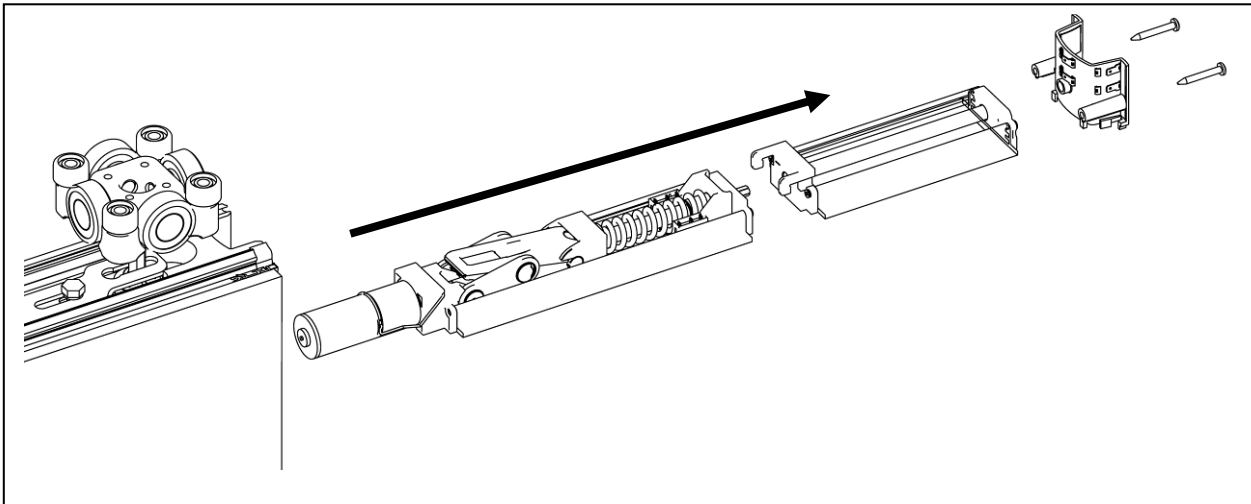
Disconnect and remove the circuit board.

Tie a cord to the cable of the ComforTronic actuator assembly so that the cable can be drawn through the top profile when re-installing.



Using the emergency crank, raise the seal approx. 3/8-inch (10 mm).

Undo the contact cap on the concave side and remove cable.



The crank coupling device and the actuator module are interconnected by hooks. Gently remove the complete assembly.

In so doing, gently tap the sealing strip back in order to release the clip connection between the sealing strip holder and the ComforTronic actuator.

Pull the assembly completely out, unhook the crank coupling device and detach the cable harness connector.

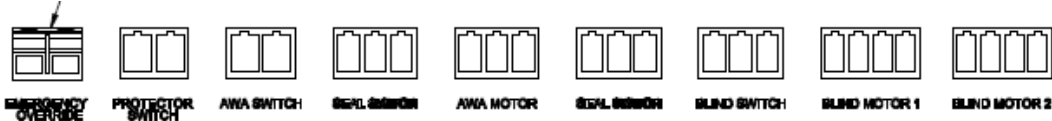
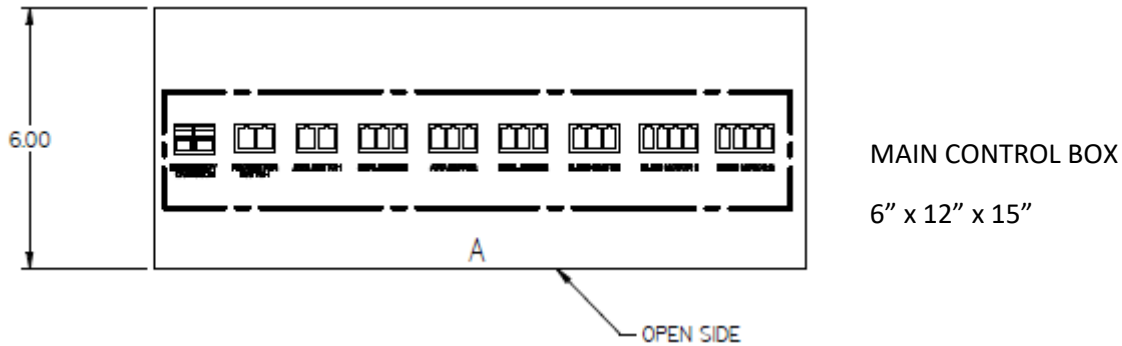
Check the actuator and replace as necessary.

Re-install in reverse order. Then re-connect the connector contacts in accordance with the wiring diagram.

**Note: Once the system has been re-assembled, re-check all operations**

### Step 9 - Protector Series

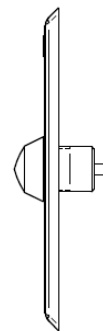
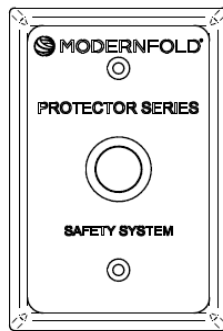
Protector Series allows an additional push button activation of the blinds in the case of an emergency. (2) Protector Switches are provided. One should be located inside the partition room and a 50' Cable is provided. The other should be in a location specified by the customer. The wiring is by others.



↑

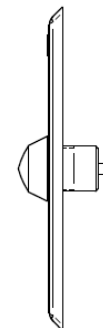
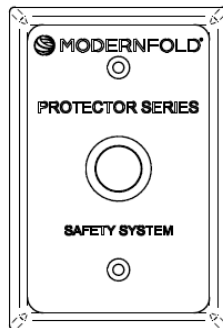
↑

PROTECTOR SWITCH  
LOCATED INSIDE PARTION ROOM

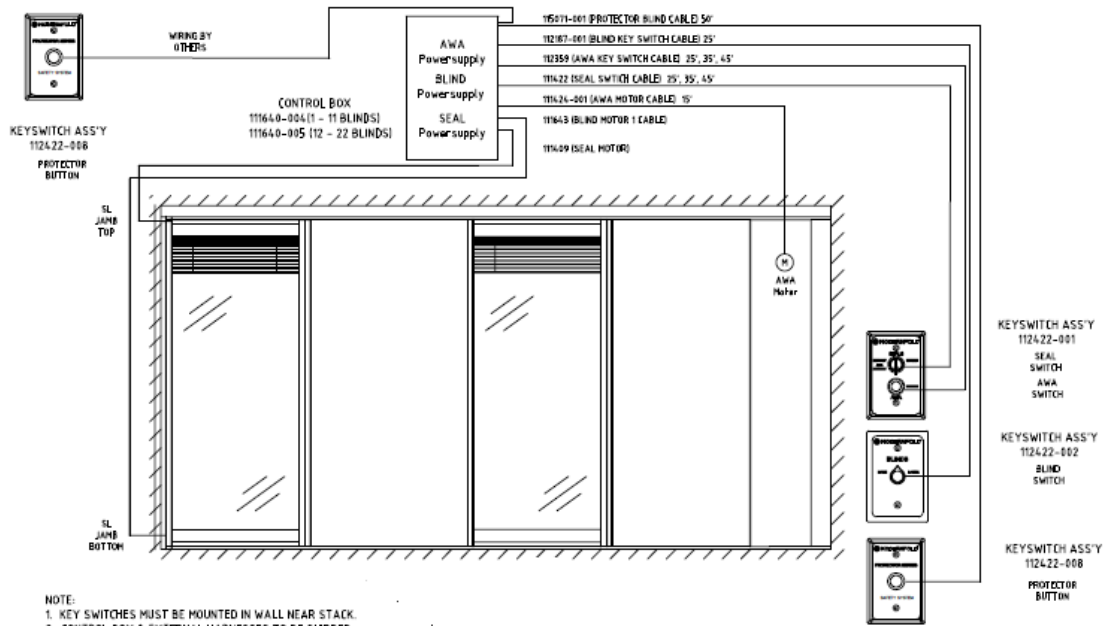


↑

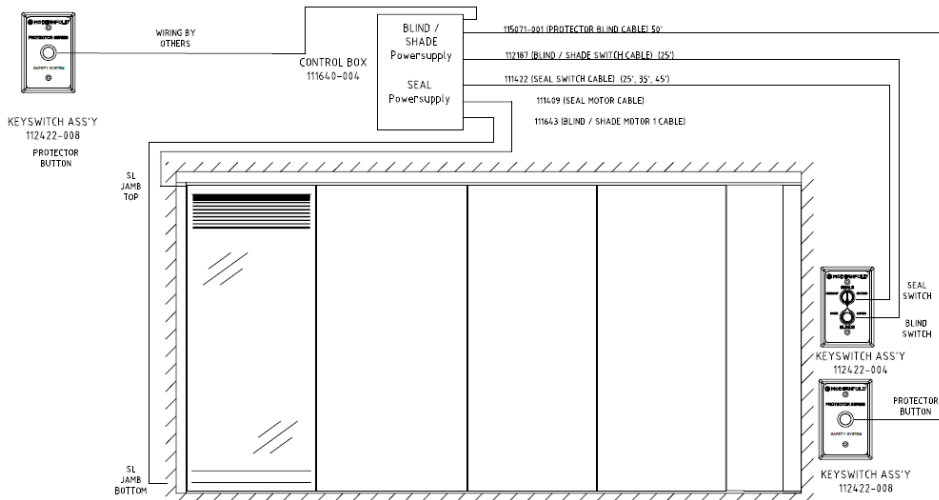
EMERGENCY OVERRIDE  
EXTERNAL LOCATION – 16ga WIRING BY OTHERS.  
REQUIRES (2) .187" TAB CONNECTORS.



## Wiring Diagram for 1 Opening with Blinds or Shades

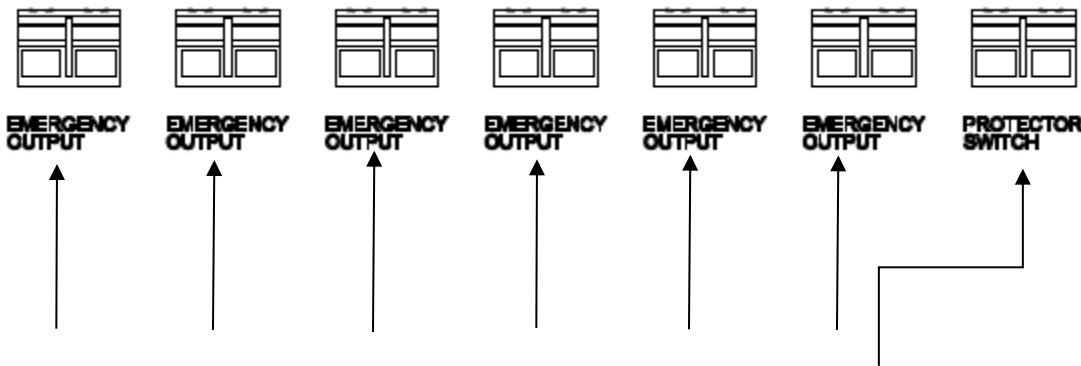
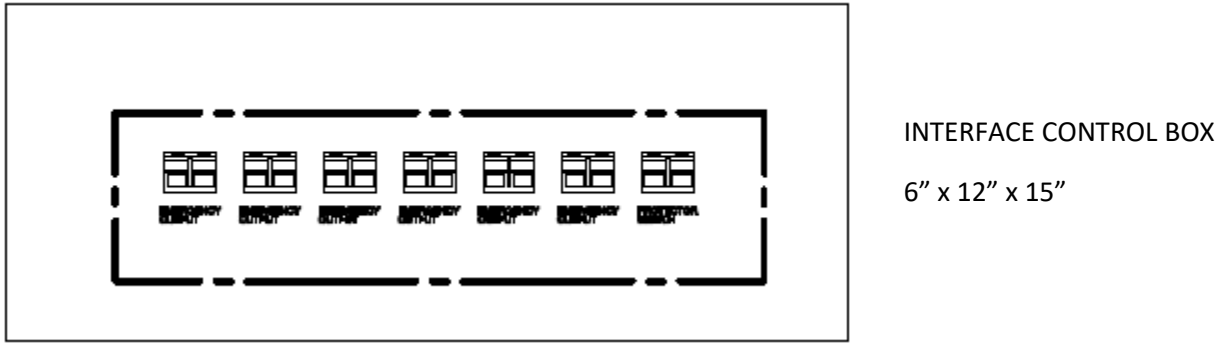


- NOTE:**
1. KEY SWITCHES MUST BE MOUNTED IN WALL NEAR STACK.
  2. CONTROL BOX & EXTERNAL HARNESSSES TO BE SHIPPED WITH PRELIMINARY PACKAGE.
  3. CONTROL BOX
    - A. UL 508A LISTED
    - B. SIZE - 7" X 14" X 16"
  4. ACCESS PANEL
    - A. SIZE - 24" X 36"



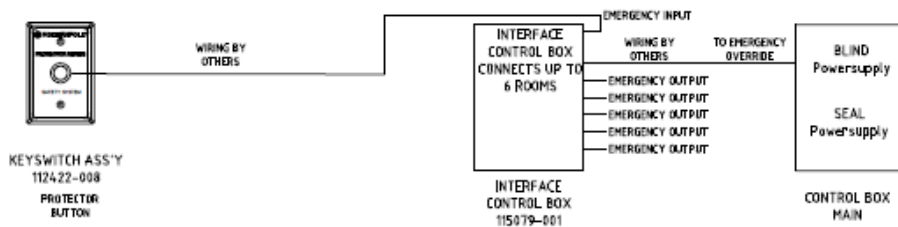
- NOTE:**
1. KEY SWITCHES MUST BE MOUNTED IN WALL NEAR STACK.
  2. CONTROL BOX & EXTERNAL HARNESSSES TO BE SHIPPED WITH PRELIMINARY PACKAGE.
  3. CONTROL BOX
    - A. UL 508A LISTED
    - B. SIZE - 7" X 14" X 16"
  4. ACCESS PANEL
    - A. SIZE - 24" X 36"

2 – 6 openings can be controlled by 1 protector switch by an interface control box.



EMERGENCY OUTPUT  
16ga CABLE BY OTHERS – CONNECT EACH MAIN CONTROL BOX TO THE INTERFACE CONTROL BOX

EMERGENCY OVERRIDE  
EXTERNAL LOCATION – WIRING BY OTHERS.  
REQUIRES (2) .187" TAB CONNECTORS.  
REFERENCE TYCO #3-520276-2

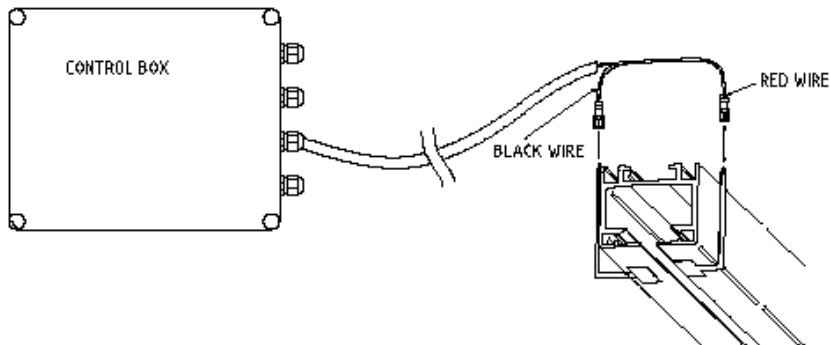


Wiring Diagram for up to 6 openings.

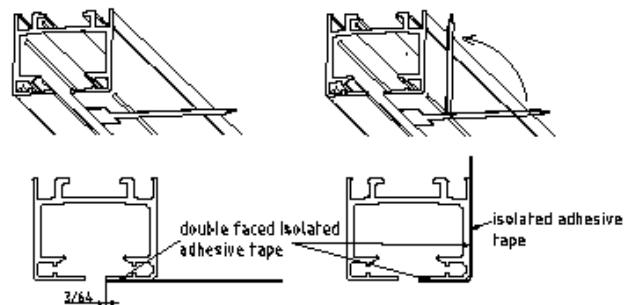


## Step 10 - PDLC GLASS

WIRING DIAGRAM - Acousti-Clear w/ PDLC Glass



PDLC GLASS TRACK CONTACT INSTALLATION

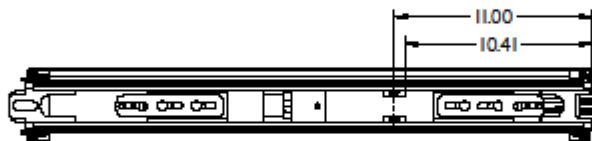


1) Remove the protection film and place the contact plate with  $3/64$  distance to the edge of the track. Press the face to the track strongly.

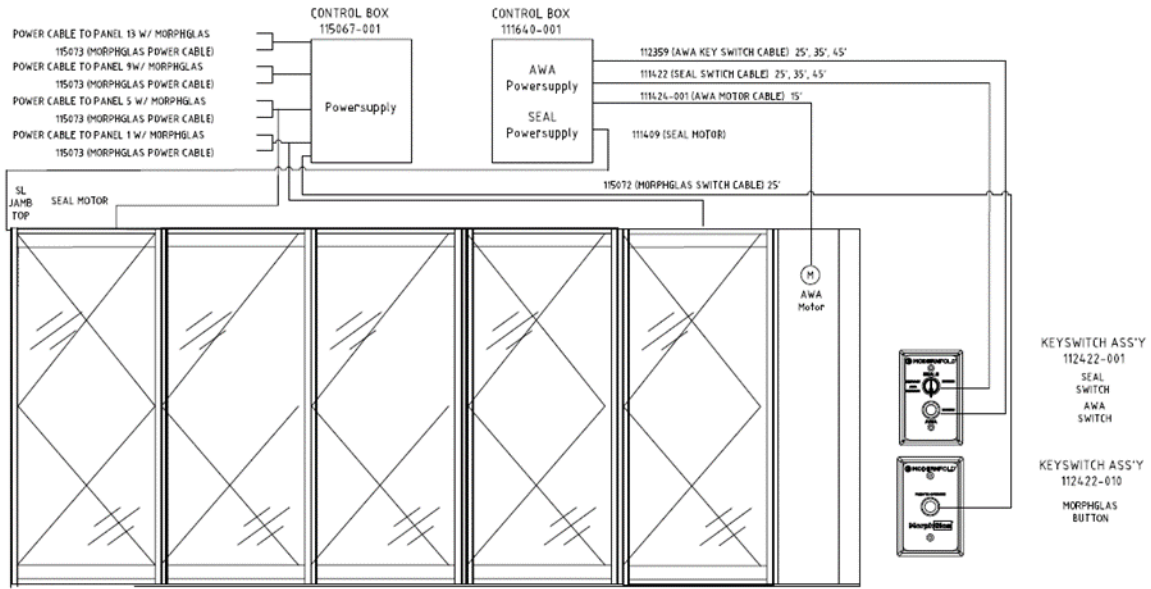
2) Press the contact plate below the track strongly and form it to the outer edge of the track simultaneously

NOTE:

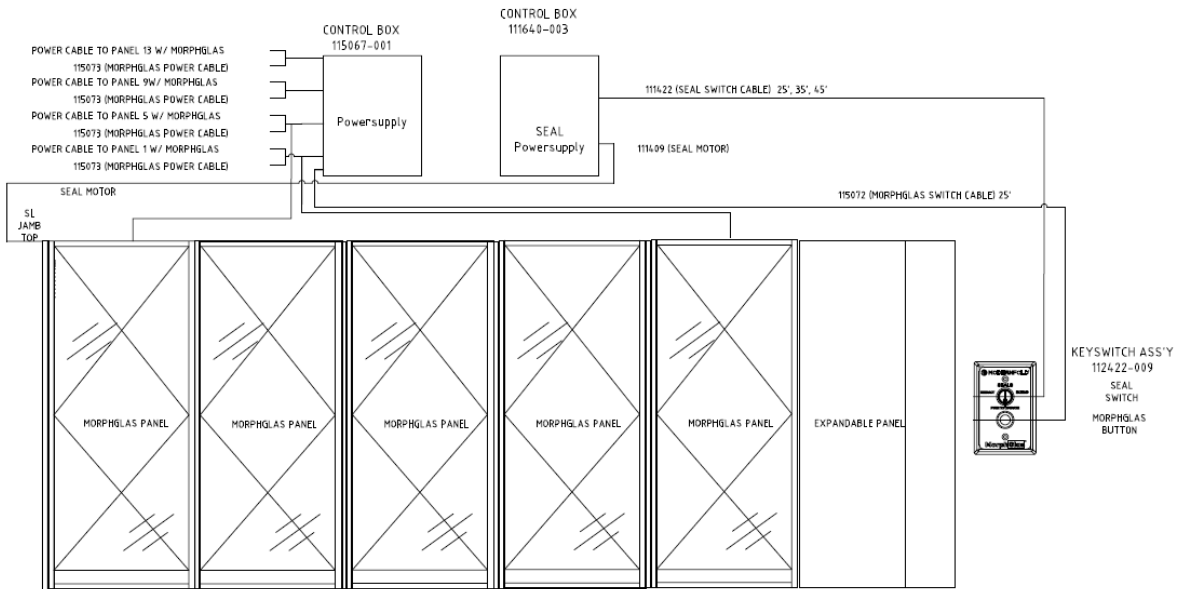
1. TRACK CONTACTS TO BE INSTALLED ABOVE THE TRAIL PANEL WITH PDLC GLASS. BOTH CONTACTS SHOULD BE LOCATED 11.00" O/C FROM THE TRAIL PANEL EDGE.



TRAIL PDLC GLASS PANEL



- NOTE:
1. KEY SWITCHES MUST BE MOUNTED IN WALL NEAR STACK.
  2. CONTROL BOX & EXTERNAL HARNESSSES TO BE SHIPPED WITH PRELIMINARY PACKAGE.
  3. CONTROL BOX
    - A. UL 508A LISTED
    - B. SIZE - 7" X 14" X 16" - 111640-001
    - C. SIZE - 6" X 12" X 15" - 115067-001
  4. ACCESS PANEL
    - A. SIZE - 24" X 36"



- NOTE:
1. KEY SWITCHES MUST BE MOUNTED IN WALL NEAR STACK.
  2. CONTROL BOX & EXTERNAL HARNESSSES TO BE SHIPPED WITH PRELIMINARY PACKAGE.
  3. CONTROL BOX
    - A. UL 508A LISTED
    - B. SIZE - 6" X 9" X 12" - 111640-003
    - C. SIZE - 6" X 12" X 15" - 115067-001
  4. ACCESS PANEL
    - A. SIZE - 24" X 36"

## Step 11 - Operation

Once the installation is complete, the partition needs to be checked for proper operation. Following the procedures outlined here will help to insure that the Modernfold Acousti-Clear Motorized® partition operates as required.

### Safety Precautions

To insure proper safe operation of the Acousti-Clear Motorized® partition, and to prevent damage to them, please use the following guidelines:

- Always move panels at a walking pace.
- Keep hands and fingers clear of meeting edges and hinged joints.
- Be sure that the path of the partition on its track is clear of any obstructions.
- Raise footbolts before moving a pass door panels.
- Close and latch pass doors prior to operating the partition.



### Setting the Acousti-Clear Motorized® Floor Seals

**Automatic top and bottom seals are standard for the Acousti-Clear Motorized® partition**

To extend the partition, turn the **Seals** key switch to the **Extend** position. Move the first panel out of the stack position along the track until it is fully seated in the Jamb Wall Channel.

Both the top and bottom seals will automatically engage. Continue moving each panel in sequence until all of the panels are in the run out of the stack position. As each panel engages the proceeding panel, both the top and bottom seals will automatically engage.

**Note: There is a normal delay between the operation of the top and bottom seal.**

To extend the **AWA**, push the button labeled **AWA**. Continue pushing the button until the Awa has completely sealed against the adjacent panel.

**Note: AWA will only operate with Seal key switch in the “Extend” position**

**Caution: Never operate the AWA switch unless all of the partition is in the opening and automatic seals have been set**

### Operating Pass Doors

Before operating the pass doors, make sure foot bolts and seals have seated, then open and close the door to check for proper operation.

### Stacking the Partition

When the partition is no longer needed, it can be stacked to reopen the space. To stack the Acousti-Clear Motorized® partition, engage the Seals key switch to the retract position until the top and bottom seals of the first panel are recessed into the panel cavity (AWA recesses automatically when the Acousti-Clear Motorized® seals are in the retract position) then move panel into the stack area.

Continue with each panel in turn until all panels are back in the stack position.

**Be sure all foot bolts and seals are fully retracted before attempting to move any panels.**



**NOTE: Stacking the partition normally requires finesse, rather than force. Each stack configuration is designed to allow the panels to flow smoothly into the stack area. Do not force the panels into the stack area.**

#### Operating Acousti-Clear Motorized® Blinds

Operation of the Acousti-Clear Motorized® blinds is done using the **Blinds** Switch. The Blinds switch has three positions, **Neutral**, **Raise**, and **Lower**.

Move switch from **Neutral** position to the **Lower** position to lower blinds. Or, to raise blinds, move the switch from the **Neutral** position to the **Raise** position.

**Jog the Blinds** Switch to the left or the right to open or close the blinds always returning to the **Neutral** position.



#### Operating Acousti-Clear Motorized® Shades

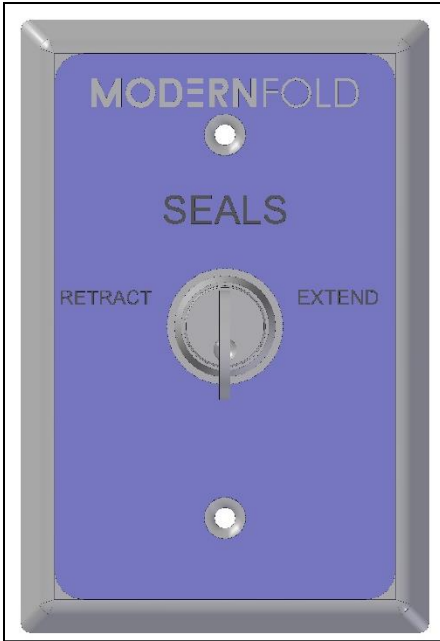
Operation of the Acousti-Clear Motorized® shades is done using the **Shades** Switch. The Shades switch has three positions, **Neutral**, **Raise**, and **Lower**.

Move switch from **Neutral** position to the **Lower** position to lower blinds. Or, to raise blinds, move the switch from the **Neutral** position to the **Raise** position.

**Operating Acousti-Clear Motorized® Telescopic Element (TE) Closure**

Operation of the Acousti-Clear Motorized® Telescopic Element Closure is done using the Push Button Switch located on the either side of the TE panel’s expandable nose. **(See Figure Below)**

The procedure is as follows:



To extend the partition, turn the **Seals** key switch to the **Extend** position. Move the first panel out of the stack position along the track until it is fully seated in the Jamb Wall Channel.

Both the top and bottom seals will automatically engage. Continue moving each panel in sequence until all of the panels are in the run out of the stack position. As each panel engages the proceeding panel, both the top and bottom seals will automatically engage.

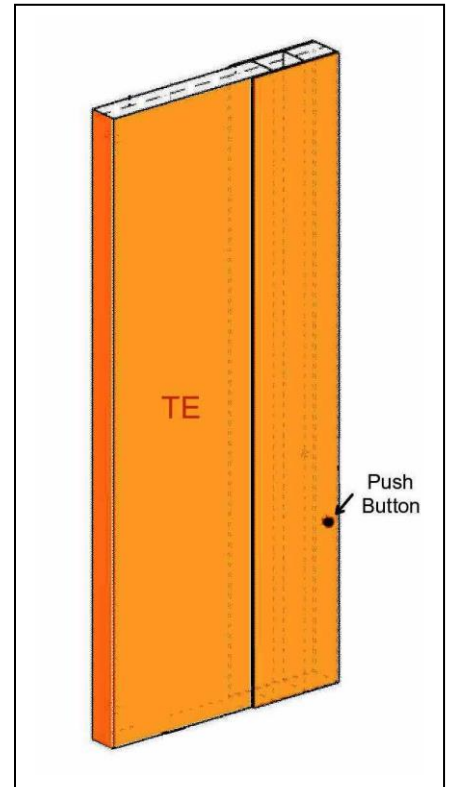
**Note: There is a normal delay between the operation of the top and bottom seal.**

To extend the **TE or Glass Expandable** panel, move the panel from the stack onto the track snugly against the proceeding panel.

Push the button located on the panel’s expandable nose. Continue pushing the button until the expandable nose seals against the trail Jamb and release after the top seal begins to extend.

The bottom seal will sequence automatically.

Glass expandable panel does not have motorized top/bottom seals once the nose is extend the wall is completely set up.



### Stacking the Partition

When the partition is no longer needed, it can be stacked to reopen the space. To stack the Acousti-Clear Motorized® partition, engage the Seals key switch to the retract position until the top and bottom seals of the first panel are recessed into the panel cavity (The TE expandable nose recesses automatically when the Acousti-Clear Motorized® seals are in the retract position) then move panel into the stack area.

Continue with each panel in turn until all panels are back in the stack position.

**Be sure all foot bolts and seals are fully retracted before attempting to move any panels.**

**NOTE: Stacking the partition normally requires finesse, rather than force. Each stack configuration is designed to allow the panels to flow smoothly into the stack area. Do not force the panels into the stack area.**

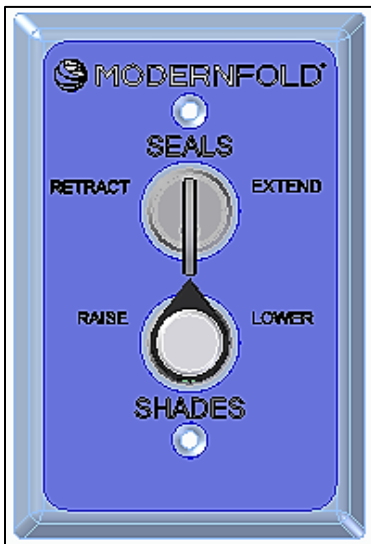
### Operating Acousti-Clear Motorized® Blinds



Operation of the Acousti-Clear Motorized® blinds is done using the **Blinds** Switch. The Blinds switch has three positions, **Neutral**, **Raise**, and **Lower**.

Move switch from **Neutral** position to the **Lower** position to lower blinds. Or, to raise blinds, move the switch from the **Neutral** position to the **Raise** position.

**Jog the Blinds** Switch to the left or the right to open or close the blinds always returning to the **Neutral** position.



### Operating Acousti-Clear Motorized® Shades

Operation of the Acousti-Clear Motorized® shades is done using the **Shades** Switch. The Shades switch has three positions, **Neutral**, **Raise**, and **Lower**.

Move switch from **Neutral** position to the **Lower** position to lower blinds. Or, to raise blinds, move the switch from the **Neutral** position to the **Raise** position.

**Operating Acousti-Clear Motorized® Protector Series**

Operation of the Acousti-Clear Protector Series® for blinds is done using the **Protector** Switch. Press the button in to lower the blinds. The maintained switch will automatically deploy all the blinds in the room / rooms.

**Operating the Protector Switch will disable power to the top / bottom seals. The Protector Switch will need pressed again to clear the signal and allow normal key switch operation.**

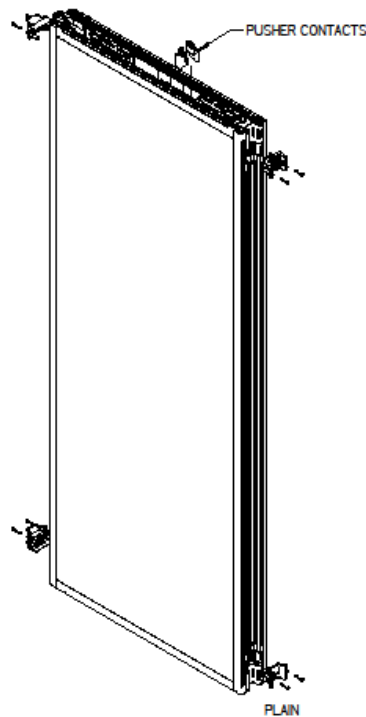


**Operating Acousti-Clear Motorized® PDLC Glass**



Operation of the Acousti-Clear PDLC Glass is done using the **MorphGlas** Switch. Press the button in to turn the glass from opaque to translucent. The switch is maintained.

The PDLC Glass is powered by the trail panel with PDLC Glass which makes all the contacts dead until the trail panel is moved into place. Once the top seal is extended, the PDLC Glass can be powered by pushing the key switch button. The glass will then change from opaque to translucent.



TRAIL PDLC GLASS PANEL

TRAIL PDLC GLASS PANEL

## Step 12 - Maintenance

---

By maintaining your installation after it is complete, you can keep its operation and appearance in good condition for many years.

### Track Maintenance

Tracks should be cleaned and inspected yearly. Use a rag dampened with mineral spirits, to thoroughly clean the inside surfaces of the entire layout. After cleaning, apply a light coat of petroleum jelly (Vaseline) to the entire surface upon which the trolley runs.

After the first and third years, check the track for proper level and readjust as necessary. This is particularly important on long spans, as truss deflections generally show up within the first three years.

### Top and Bottom Seal Contact

Should the top or bottom seals appear to no longer come in contact with the soffit or floor, maintenance of the Comfortronic seal mechanism may be required. Comfortronic mechanisms can be replaced while panels are in the standing position.

### Panel Maintenance

The panels should be periodically checked for damage and repaired as necessary. Regularly inspect all seal mechanisms and operate the closure. Any adjustments necessary should be made and/or any damaged or inoperable parts should be replaced.

After the first and third years of operation, panel vertical edges should be checked for plumb, and if necessary, plumbed again by adjusting the trolleys. (This can also be a result of header deflection.)

### Cleaning

Regular cleaning of the partition is a housekeeping procedure that your customer should perform. However, during installation and operation, the panels can also get soiled or marked.

- Clean the laminate surfaces using a damp cloth or sponge and a mild soap. For more on cleaning more difficult stains go to [wilsonart.com](http://wilsonart.com) for instructions.
- Clean the vertical profiles using only a weak soap solution.
- Use a standard glass cleaner when cleaning the Acousti-Clear Motorized® glass

**Note: Because the panels are electrically operated, take care not to use soap cleaners, water and/or glass cleaner in electrical areas.**

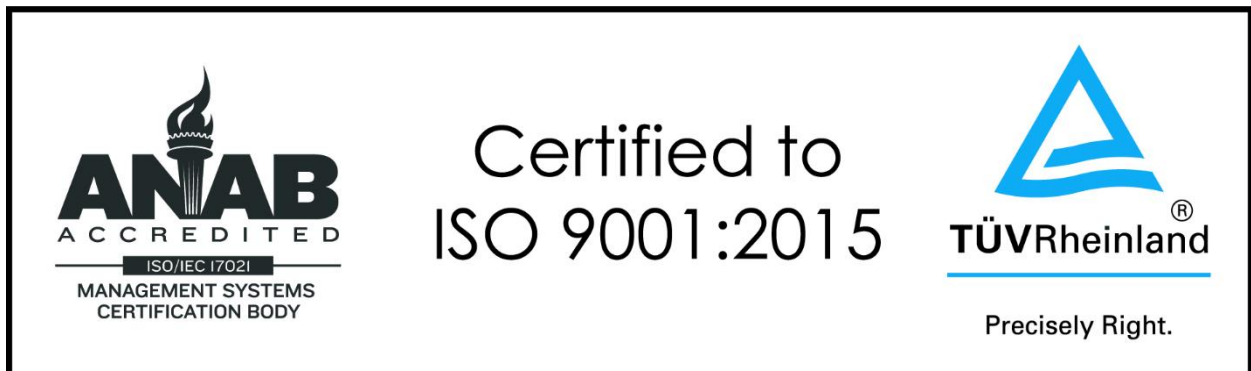
### IDENTIFICATION FOR THE DISTRIBUTOR

This label with the appropriate numbers applied is installed on the top of the panel assembly. It can help you later, if this partition should ever need repairs.

<b>ORDER #</b> _____ <b>LEAD</b> →
<b>PARTITION:</b> _____

### IDENTIFICATION FOR THE END USER

<b>Installer Information</b>
Company: _____
Install Date: _____
Job # _____





215 West New Road  
Greenfield, IN 46140

Toll Free: 800.869.9685

email: [info@modernfold.com](mailto:info@modernfold.com)

[www.modernfold.com](http://www.modernfold.com)

A Dormakaba Group Company

[www.dormakaba.com](http://www.dormakaba.com)

Form No. 8201

Revision Date: December 21, 2020

Manufacturer reserves the right to change design or specifications at any time without notice.

Please contact your local Modernfold distributor for further assistance, or visit our website at [www.modernfold.com](http://www.modernfold.com)