

LINE

PA 100

concept

## PA 100

PA100 is a modular demountable partition that is composed of double independent panels allowing access points throughout its length. The system was developed according to the principles of modern partitioning systems.

It is a versatile structure that allows for a wide range of finish options including glass. It is the perfect solution for dynamic spaces.



PA 100  
conceito

LINE

PA 100

## TYPE

Modular demountable partition is composed of double independent panels that allows access points throughout the length of the system. The total thickness of this product is 108mm.

## STRUCTURE

Freestanding structure that is composed of vertical and horizontal elements that are anodized, lacquered aluminum or galvanized steel, depending on the project requirements.

## FLOOR AND CEILING VIEW

Aluminum floor and ceiling track with a view of 3mm.

PA 100  
concept



LINE

## PA 100 - OPAQUE

### MODULES

The panels are placed through a clipping system, allowing for an easy and quick installation. Space between each panel is 3 to 5mm.

Melamine 19mm panels with various finishes available (natural wood veneer or HPL) with a 3mm PVC edge banding. Acoustic insulation through 60mm mineral rock wool with a density of 40 kg/m<sup>3</sup>.



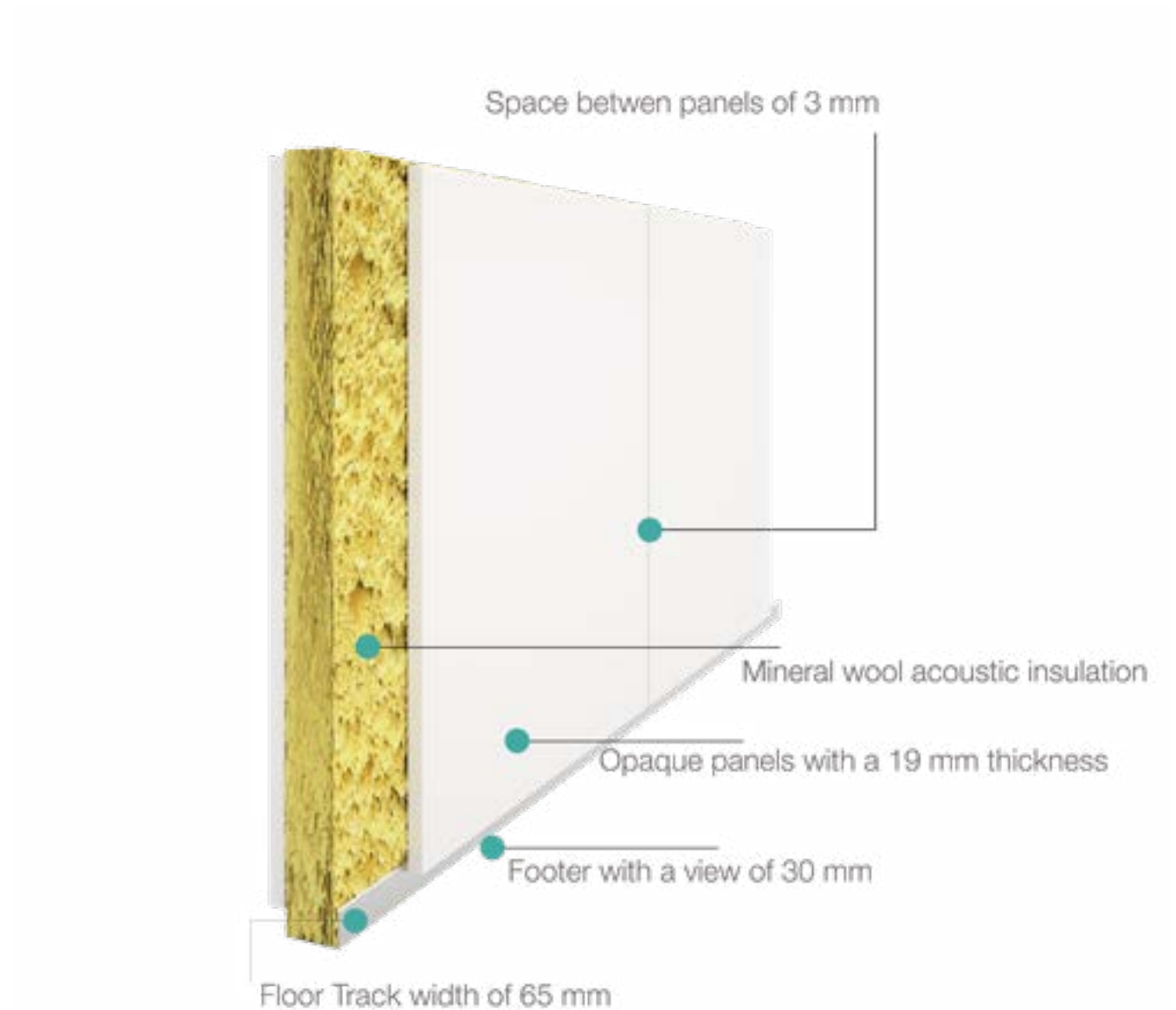
PA 100  
concept

LINE

PA 100 - GLASS

### ACOUSTIC INSULATION

Certified by the Portuguese National Engineering Laboratory, with an acoustic insulation of 46 to 53 dB Rw



PA 100  
concept

LINE

PA 100 - GLASS

## MODULES

Double glazed framed modules with glass of 4 or 6mm. There is an interior space between the two panels of glass which allows for incorporation of blinds up to 80mm thick.



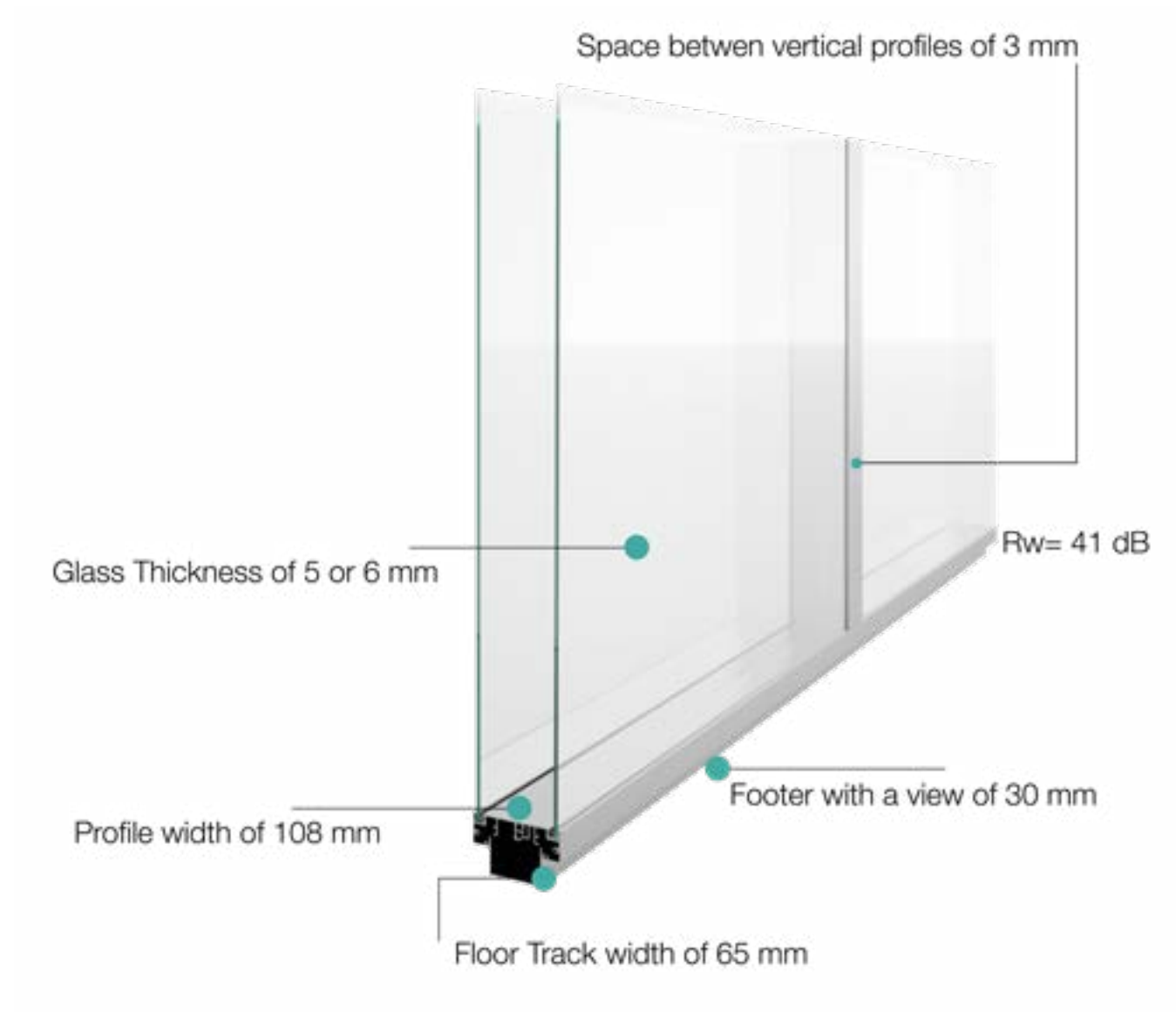
PA 100  
concept

LINE

PA 100 - GLASS

## ACOUSTIC INSULATION

Certified by the Portuguese National Engineering Laboratory with an acoustic insulation of 41 dB Rw



PA 100  
concept

LINE

PA 100

**TECHNICAL DETAILS**



PA 100 Opaque with a full height panel



PA 100 Opaque with vertical modules



PA 100 Glass Modules

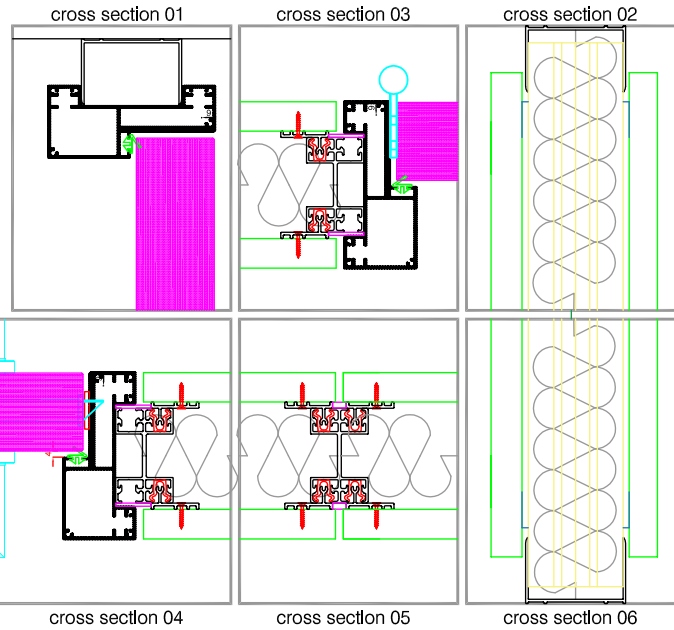
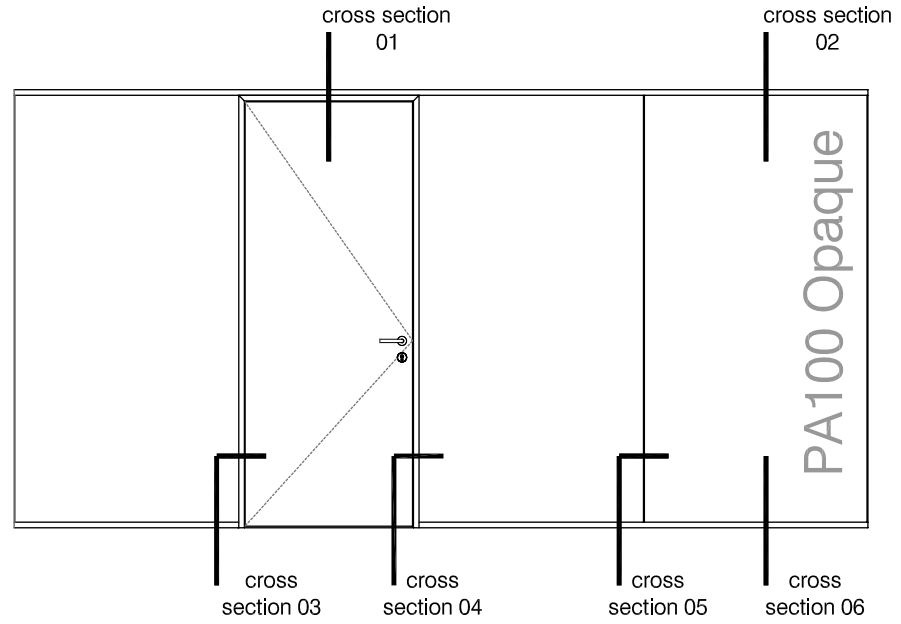
PA 100  
concept

LINE



PA 100

TECHNICAL DETAILS



PA 100  
concept

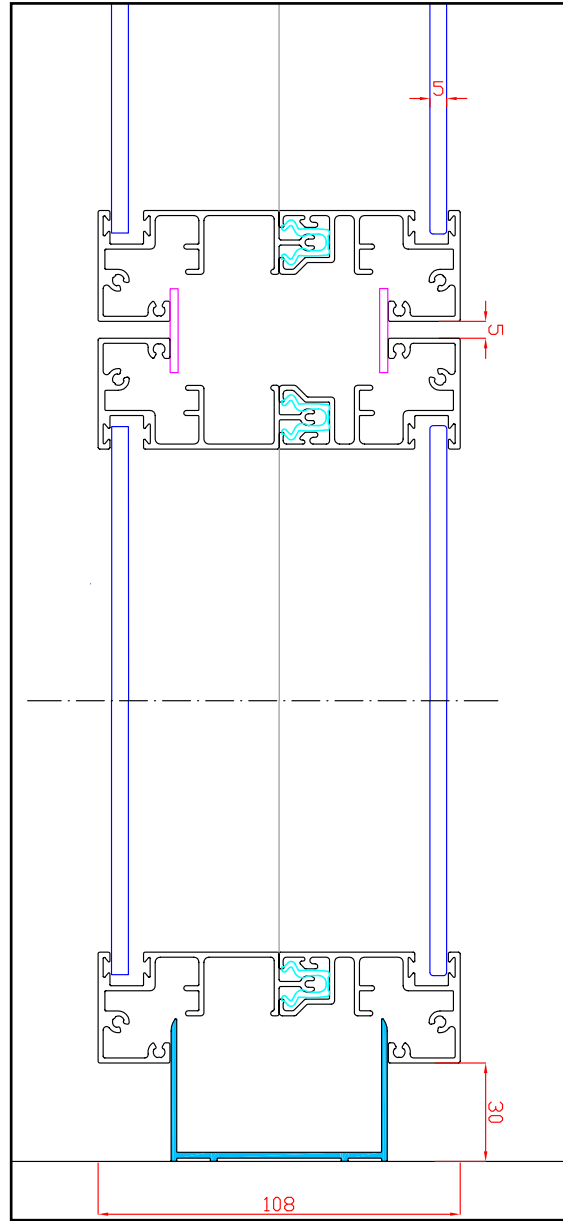
LINE

PA 100

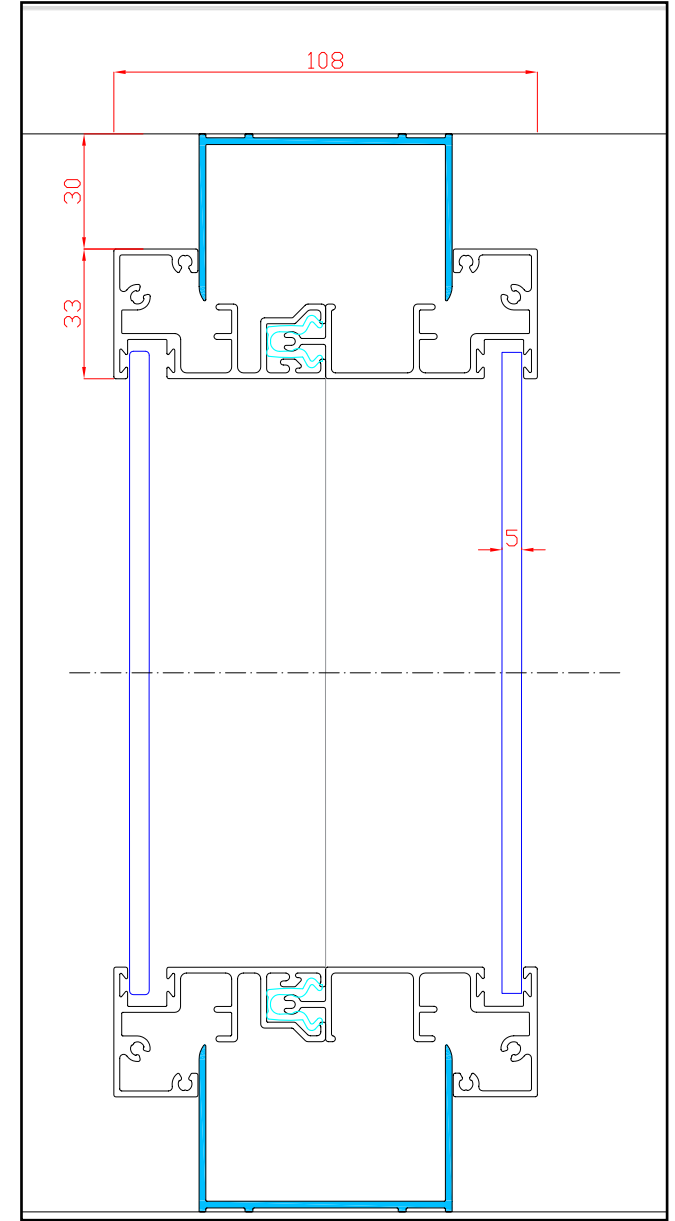
**TECHNICAL DETAILS**

PA 100  
concept

LINE



PA 100 Glass Horizontal Section



PA 100 Glass Vertical Section



[www.linesystems.eu](http://www.linesystems.eu)