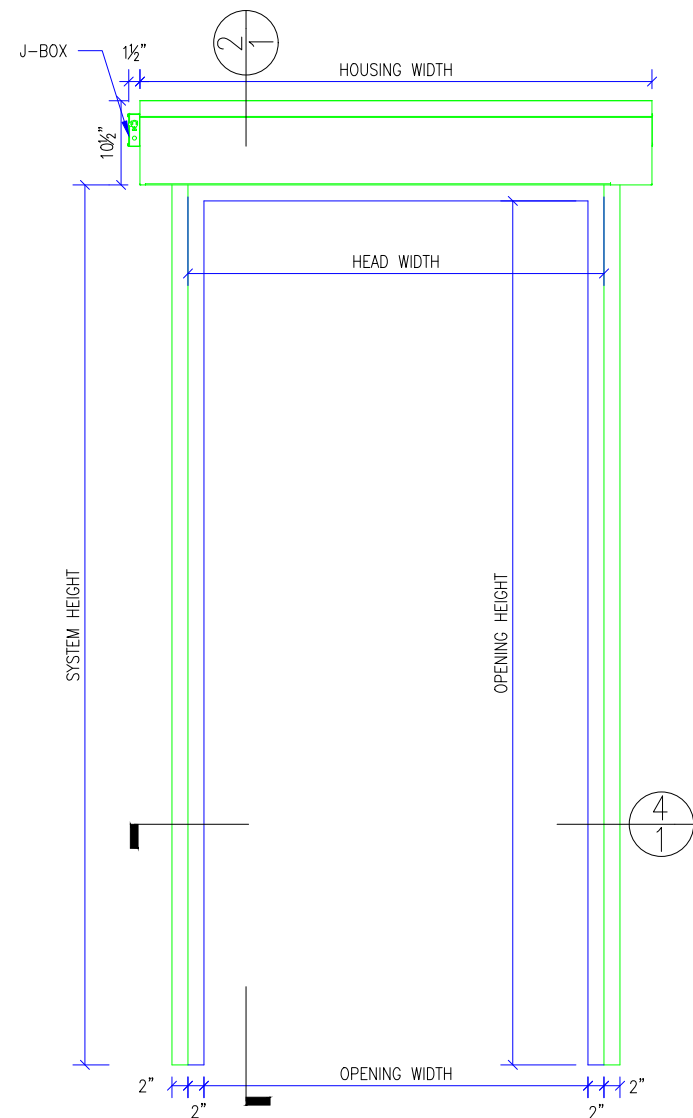
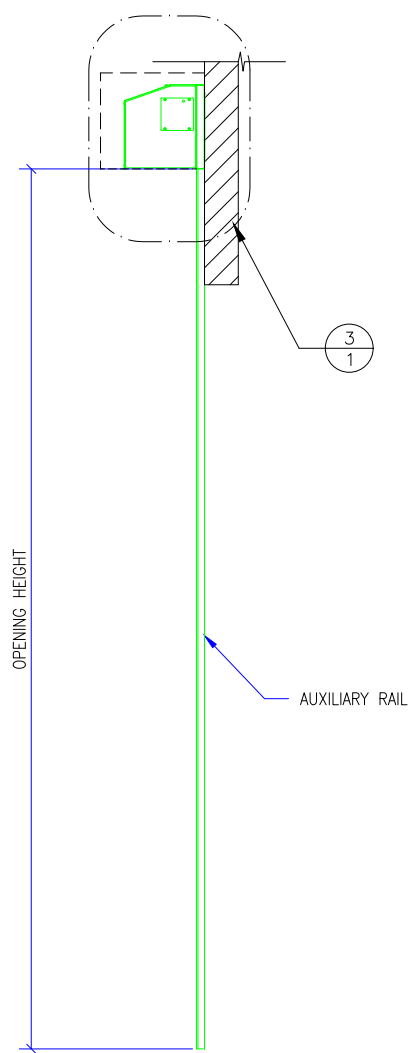


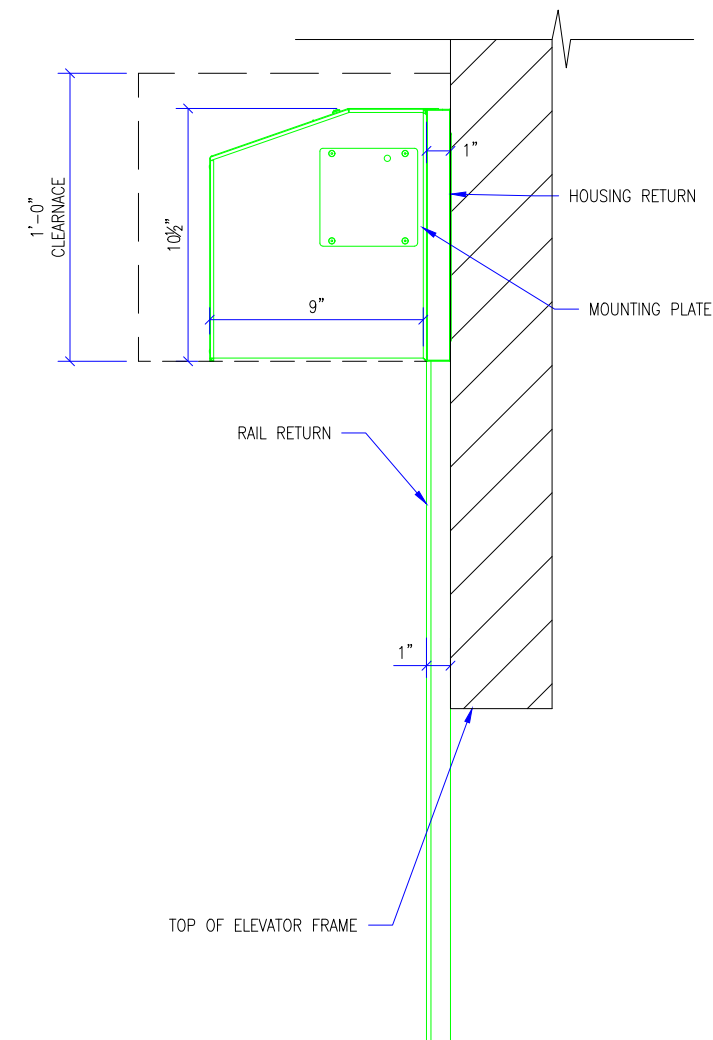
- M200/400 GENERAL NOTES:
1. CLIENT TO PROVIDE CONTINUOUS MOUNTING SURFACE FOR STRUCTURAL AND SHEET METAL ATTACHMENT.
 2. TOLERANCE: FLOOR TO CEILING VARIANCE MUST BE WITHIN +/- 1/2" ACROSS LENGTH OF MACHINE..
 3. ORDER LENGTHS TO BE AT 1/4" INCREMENTS ONLY.
 4. DIMENSIONS DO NOT INCLUDE HEADS OF EXTERNAL FASTENERS.
 5. SMOKE RATING FOR ENCLOSURE ABOVE HOUSING DESIGNED BY OTHERS.
 6. INTERNAL MOTORS ARE ACCESSIBLE THROUGH HOUSING OPENING WHEN UNIT IS DEPLOYED.



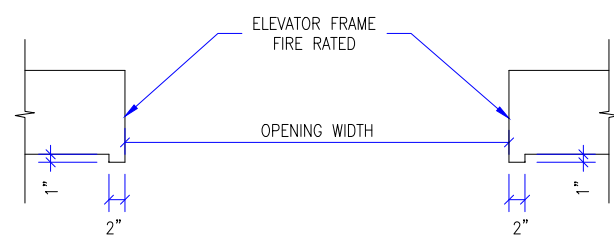
1 M200 ELEVATION
SCALE: 1/2" = 1'-0"



2 M200 SECTION
SCALE: 1/2" = 1'-0"



3 M200 HOUSING DETAIL
SCALE: 1 1/2" = 1'-0"



4 M200 PLAN-JAMB
SCALE: 1/2" = 1'-0"

M200	
MAX LENGTH (IN)	MAX WEIGHT (LB)
55	75

REVISION

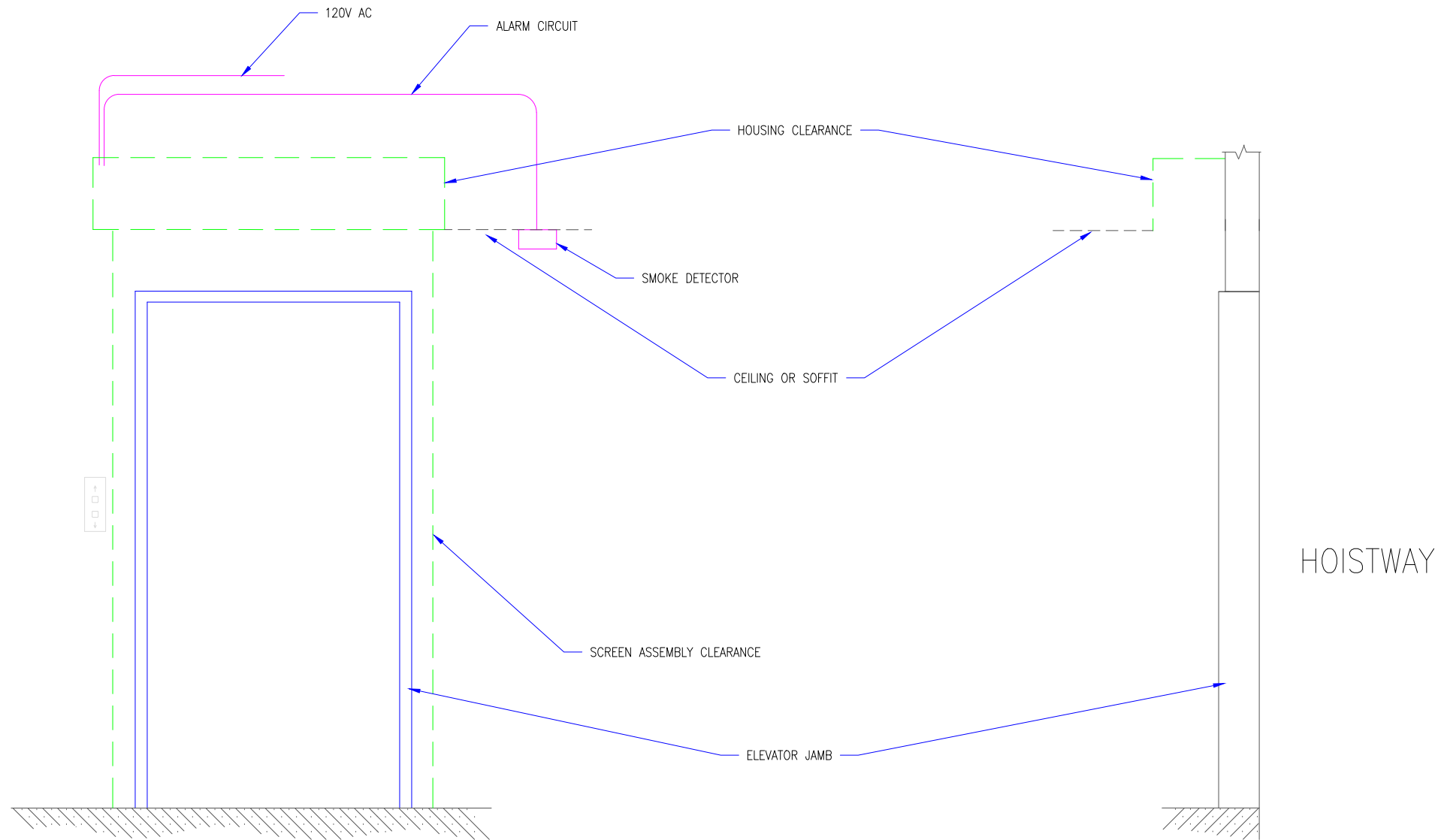
REVISION NUMBER	REVISION DATE	REVISION DESCRIPTION
D1	9.16.20	INITIAL RELEASE
---	---	---

QUOTE: ---
CONFIGURATION: ---
PROJECT: ---
DIST.: ---

DESIGN SET: D1	SIZE B
MODEL: M200	SHEET
SHEET TITLE: M200 DETAILS	1 OF 5
DRAWN: TLM	9.16.2020

THESE DRAWINGS SHOW OUR INTERPRETATION OF THE PRINCIPAL PLANS AND SPECIFICATIONS. THEY ARE SUBMITTED AS CHECK PRINTS REQUIRING REVIEW AND POSSIBLE REVISIONS TO DETAILS AND/OR DIMENSIONS. BEFORE FABRICATION OF MATERIALS CAN BEGIN, DRAWING PACKAGE MUST MATCH O.P.M. ORDER AND BE RETURNED SIGNED AND DATED. IF THERE ARE SIZE DISCREPANCIES BETWEEN THIS DRAWING PACKAGE AND O.P.M. ORDER, THESE DRAWING SUPERCEDE O.P.M. DIMENSIONS. IF CONSIDERABLY DIFFERENT, A RE-SUBMITTAL OF O.P.M. ORDER WILL BE REQUIRED. THIS SIGNATURE INDICATES PURCHASER'S FULL ACCEPTANCE OF DETAILS SHOWN AND THE PRODUCT IN CONFORMANCE TO SAME. THESE DESIGNS AND DRAWINGS ARE THE EXCLUSIVE PROPERTY OF SMOKE GUARD, INC. AND ARE NOT TO BE USED OR DUPLICATED WITHOUT PERMISSIONS.

- M200/400 GENERAL NOTES:
1. CLIENT TO PROVIDE CONTINUOUS MOUNTING SURFACE FOR STRUCTURAL AND SHEET METAL ATTACHMENT.
 2. TOLERANCE: FLOOR TO CEILING VARIANCE MUST BE WITHIN +/- 1/2" ACROSS LENGTH OF MACHINE..
 3. ORDER LENGTHS TO BE AT 1/4" INCREMENTS ONLY.
 4. DIMENSIONS DO NOT INCLUDE HEADS OF EXTERNAL FASTENERS.
 5. SMOKE RATING FOR ENCLOSURE ABOVE HOUSING DESIGNED BY OTHERS.
 6. INTERNAL MOTORS ARE ACCESSIBLE THROUGH HOUSING OPENING WHEN UNIT IS DEPLOYED.



LANDING ELEVATION

SECTION

1 M200 ELEVATION DETAILS
SCALE: 1/2" = 1'-0"

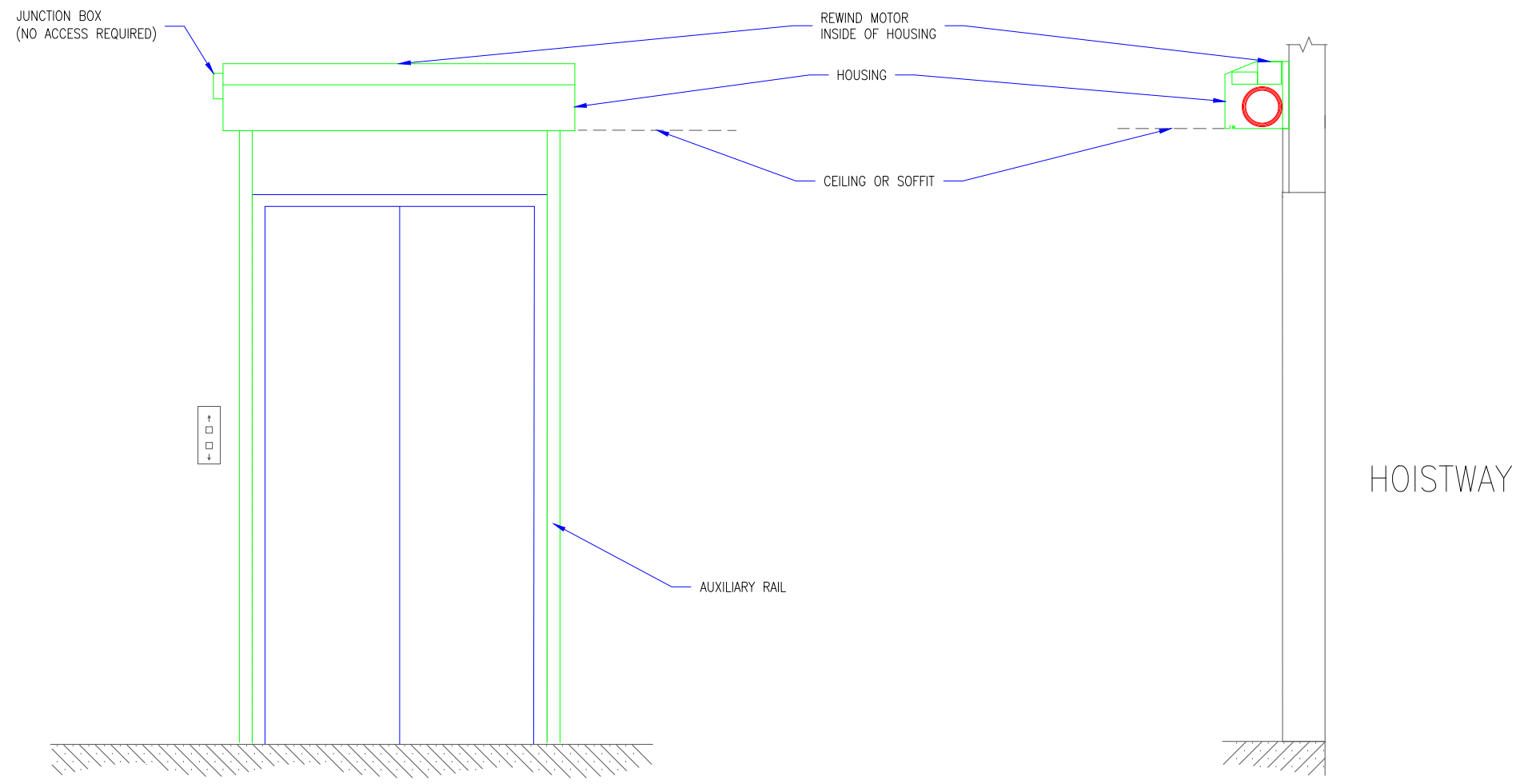
REVISION		
REVISION NUMBER	REVISION DATE	REVISION DESCRIPTION
D1	9.16.20	INITIAL RELEASE
---	---	---

QUOTE: ----
CONFIGURATION: ----
PROJECT: ----
DIST.: ----

DESIGN SET: D1	SIZE B
MODEL: M200	SHEET
SHEET TITLE: M200 ELEVATION DETAILS	2 OF 5
DRAWN: TLM	9.16.2020

THESE DRAWINGS SHOW OUR INTERPRETATION OF THE PRINCIPAL PLANS AND SPECIFICATIONS. THEY ARE SUBMITTED AS CHECK PRINTS REQUIRING REVIEW AND POSSIBLE REVISIONS TO DETAILS AND/OR DIMENSIONS. BEFORE FABRICATION OF MATERIALS CAN BEGIN, DRAWING PACKAGE MUST MATCH O.P.M. ORDER AND BE RETURNED SIGNED AND DATED. IF THERE ARE SIZE DISCREPANCIES BETWEEN THIS DRAWING PACKAGE AND O.P.M. ORDER, THESE DRAWING SUPERCEDE O.P.M. DIMENSIONS. IF CONSIDERABLY DIFFERENT, A RE-SUBMITTAL OF O.P.M. ORDER WILL BE REQUIRED. THIS SIGNATURE INDICATES PURCHASER'S FULL ACCEPTANCE OF DETAILS SHOWN AND THE PRODUCT IN CONFORMANCE TO SAME. THESE DESIGNS AND DRAWINGS ARE THE EXCLUSIVE PROPERTY OF SMOKE GUARD, INC. AND ARE NOT TO BE USED OR DUPLICATED WITHOUT PERMISSIONS.

- M200/400 GENERAL NOTES:
1. CLIENT TO PROVIDE CONTINUOUS MOUNTING SURFACE FOR STRUCTURAL AND SHEET METAL ATTACHMENT.
 2. TOLERANCE: FLOOR TO CEILING VARIANCE MUST BE WITHIN +/- 1/2" ACROSS LENGTH OF MACHINE..
 3. ORDER LENGTHS TO BE AT 1/4" INCREMENTS ONLY.
 4. DIMENSIONS DO NOT INCLUDE HEADS OF EXTERNAL FASTENERS.
 5. SMOKE RATING FOR ENCLOSURE ABOVE HOUSING DESIGNED BY OTHERS.
 6. INTERNAL MOTORS ARE ACCESSIBLE THROUGH HOUSING OPENING WHEN UNIT IS DEPLOYED.



LANDING ELEVATION - READY STATE

SECTION - READY STATE

① M200 READY STATE DETAILS
SCALE: 1/2" = 1'-0"

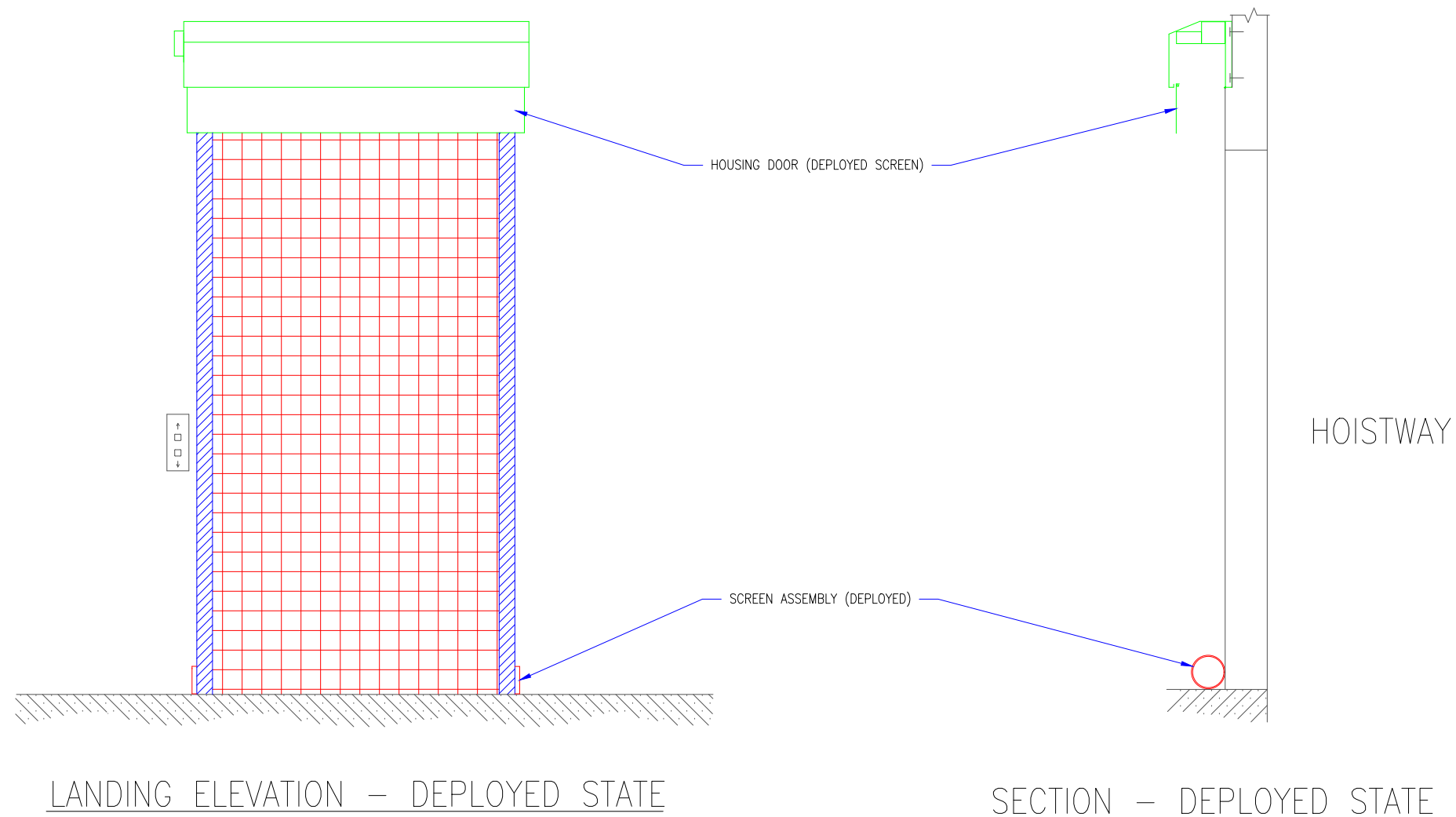
REVISION		
REVISION NUMBER	REVISION DATE	REVISION DESCRIPTION
D1	9.16.20	INITIAL RELEASE
---	---	---

QUOTE: ----
CONFIGURATION: ----
PROJECT: ----
DIST.: ----

DESIGN SET: D1	SIZE B
MODEL: M200	SHEET
SHEET TITLE: M200 READY STATE DETAILS	3 OF 5
DRAWN: TLM	9.16.2020

THESE DRAWINGS SHOW OUR INTERPRETATION OF THE PRINCIPAL PLANS AND SPECIFICATIONS. THEY ARE SUBMITTED AS CHECK PRINTS REQUIRING REVIEW AND POSSIBLE REVISIONS TO DETAILS AND/OR DIMENSIONS. BEFORE FABRICATION OF MATERIALS CAN BEGIN, DRAWING PACKAGE MUST MATCH O.P.M. ORDER AND BE RETURNED SIGNED AND DATED. IF THERE ARE SIZE DISCREPANCIES BETWEEN THIS DRAWING PACKAGE AND O.P.M. ORDER, THESE DRAWING SUPERCEDE O.P.M. DIMENSIONS. IF CONSIDERABLY DIFFERENT, A RE-SUBMITTAL OF O.P.M. ORDER WILL BE REQUIRED. THIS SIGNATURE INDICATES PURCHASER'S FULL ACCEPTANCE OF DETAILS SHOWN AND THE PRODUCT IN CONFORMANCE TO SAME. THESE DESIGNS AND DRAWINGS ARE THE EXCLUSIVE PROPERTY OF SMOKE GUARD, INC. AND ARE NOT TO BE USED OR DUPLICATED WITHOUT PERMISSIONS.

- M200/400 GENERAL NOTES:
1. CLIENT TO PROVIDE CONTINUOUS MOUNTING SURFACE FOR STRUCTURAL AND SHEET METAL ATTACHMENT.
 2. TOLERANCE: FLOOR TO CEILING VARIANCE MUST BE WITHIN +/- 1/2" ACROSS LENGTH OF MACHINE..
 3. ORDER LENGTHS TO BE AT 1/4" INCREMENTS ONLY.
 4. DIMENSIONS DO NOT INCLUDE HEADS OF EXTERNAL FASTENERS.
 5. SMOKE RATING FOR ENCLOSURE ABOVE HOUSING DESIGNED BY OTHERS.
 6. INTERNAL MOTORS ARE ACCESSIBLE THROUGH HOUSING OPENING WHEN UNIT IS DEPLOYED.



1 M200 DEPLOYED DETAIL
SCALE: 1/2" = 1'-0"

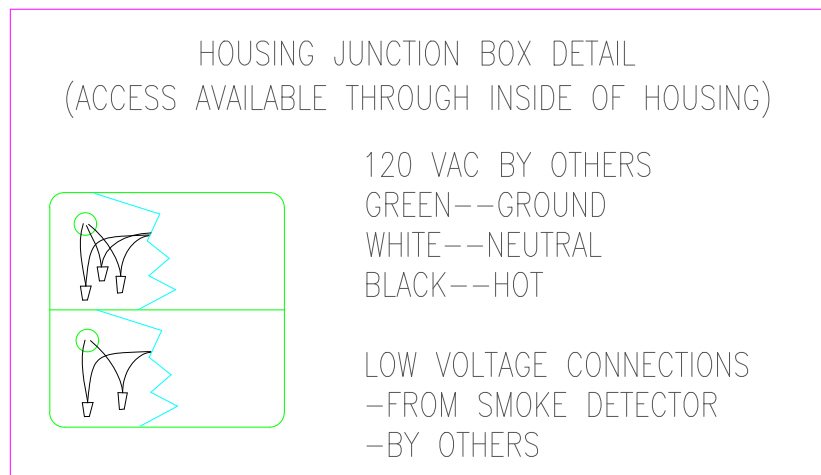
REVISION		
REVISION NUMBER	REVISION DATE	REVISION DESCRIPTION
D1	9.16.20	INITIAL RELEASE
---	---	---

QUOTE: ----
CONFIGURATION: ----
PROJECT: ----
DIST.: ----

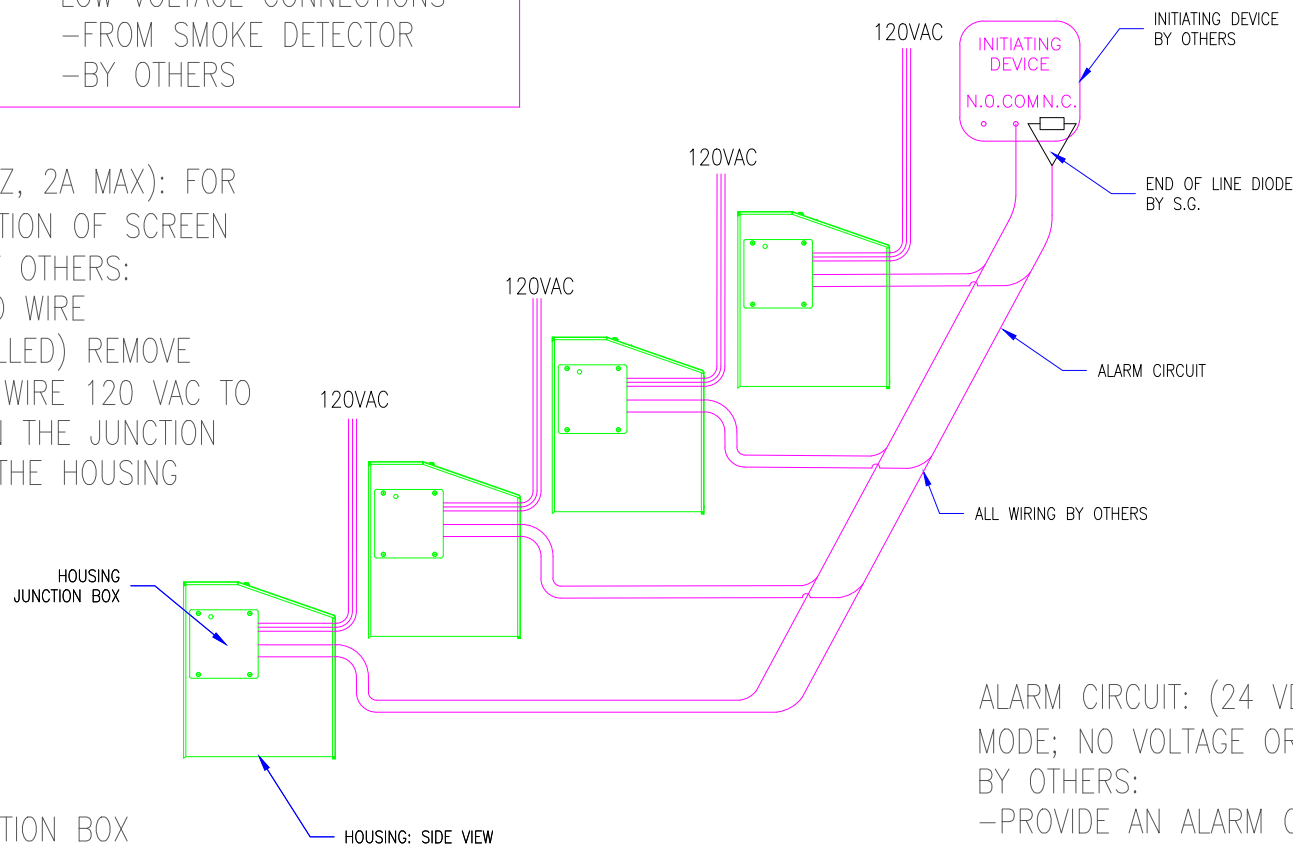
DESIGN SET: D1	SIZE B
MODEL: M200	SHEET
SHEET TITLE: M200 DEPLOYED DETAILS	4 OF 5
DRAWN: TLM	9.16.2020

THESE DRAWINGS SHOW OUR INTERPRETATION OF THE PRINCIPAL PLANS AND SPECIFICATIONS. THEY ARE SUBMITTED AS CHECK PRINTS REQUIRING REVIEW AND POSSIBLE REVISIONS TO DETAILS AND/OR DIMENSIONS. BEFORE FABRICATION OF MATERIALS CAN BEGIN, DRAWING PACKAGE MUST MATCH O.P.M. ORDER AND BE RETURNED SIGNED AND DATED. IF THERE ARE SIZE DISCREPANCIES BETWEEN THIS DRAWING PACKAGE AND O.P.M. ORDER, THESE DRAWING SUPERCEDE O.P.M. DIMENSIONS. IF CONSIDERABLY DIFFERENT, A RE-SUBMITAL OF O.P.M. ORDER WILL BE REQUIRED. THIS SIGNATURE INDICATES PURCHASER'S FULL ACCEPTANCE OF DETAILS SHOWN AND THE PRODUCT IN CONFORMANCE TO SAME. THESE DESIGNS AND DRAWINGS ARE THE EXCLUSIVE PROPERTY OF SMOKE GUARD, INC. AND ARE NOT TO BE USED OR DUPLICATED WITHOUT PERMISSIONS.

- M200/400 GENERAL NOTES:
1. CLIENT TO PROVIDE CONTINUOUS MOUNTING SURFACE FOR STRUCTURAL AND SHEET METAL ATTACHMENT.
 2. TOLERANCE: FLOOR TO CEILING VARIANCE MUST BE WITHIN +/- 1/2" ACROSS LENGTH OF MACHINE.
 3. ORDER LENGTHS TO BE AT 1/4" INCREMENTS ONLY.
 4. DIMENSIONS DO NOT INCLUDE HEADS OF EXTERNAL FASTENERS.
 5. SMOKE RATING FOR ENCLOSURE ABOVE HOUSING DESIGNED BY OTHERS.
 6. INTERNAL MOTORS ARE ACCESSIBLE THROUGH HOUSING OPENING WHEN UNIT IS DEPLOYED.



120 VAC POWER (60 HZ, 2A MAX): FOR MOTOR REWIND/RETRACTION OF SCREEN AFTER DEPLOYMENT. BY OTHERS:
-PROVIDE CONDUIT AND WIRE
-(AFTER UNIT IS INSTALLED) REMOVE TEMPORARY PLUG AND WIRE 120 VAC TO HIGH VOLTAGE WIRES IN THE JUNCTION BOX ON THE SIDE OF THE HOUSING
-PROVIDE GROUND



HOUSING JUNCTION BOX
(ACCESS THROUGH INSIDE OF HOUSING)

THIS DRAWING ILLUSTRATES THAT UP TO 4 HOUSINGS CAN BE WIRED, IN PARALLEL, TO THE SAME END-OF-DIODE AT AN INITIATING DEVICE (SMOKE DETECTOR) AUXILIARY CONTACT.

SMOKE DETECTOR (UL 268 COMPLIANT) BY OTHERS:
-PROVIDE A NORMALLY CLOSED AUXILIARY CONTACT THAT IS ACTIVATED WHEN THE SMOKE DETECTOR GOES INTO ALARM. THIS CONTACT DOES NOT ACTIVATE ON GENERAL BUILDING ALARM. NO VOLTAGE EXISTS ACROSS THE CONTACT
-(WHEN THERE ARE MULTIPLE-UNIT SYSTEM IN A COMMON AREA THAT ARE ACTIVATED BY A SINGLE SMOKE DETECTOR); WIRE UP TO 4 SMOKE GUARD UNITS TO A SINGLE SMOKE DETECTOR, IN PARALLEL. MULTIPLE UNITS ON A COMMON FLOOR THAT ARE ACTIVATED BY THE SAME SMOKE DETECTOR REQUIRE ALARM CIRCUIT WIRING FROM THE DETECTOR TO EACH UNIT. THE PRINTED CIRCUIT BOARD IN EACH HOUSING MUST SEE THE END-OF-LINE DIODE ON THE SMOKE DETECTOR.

END-OF-LINE DIODE:
BY OTHERS:
-INSTALL 3.9V OR 2 WATT END-OF-LINE DIODE (FURNISHED BY SMOKE GUARD) AT INITIATING DEVICE.
-IN SERIES WITH THE NORMALLY CLOSED AUXILIARY CONTACT.

ALARM CIRCUIT: (24 VDC ,40 MA IN MONITORING MODE; NO VOLTAGE OR AMPS IN ALARM MODE)
BY OTHERS:
-PROVIDE AN ALARM CIRCUIT FROM THE NORMALLY CLOSED AUXILIARY CONTACT OF THE SMOKE DETECTOR TO THE LOW VOLTAGE WIRES IN THE JUNCTION BOX ON THE SIDE OF THE HOUSING, USING STRANDED WIRES, IN RACEWAYS OR CONDUIT.
-(AFTER UNIT IS INSTALLED) TERMINATE THE SMOKE DETECTOR WIRES TO LOW VOLTAGE WIRES IN THE JUNCTION BOX ON THE SIDE OF THE HOUSING.

1 M200 ELECTRICAL DETAILS
SCALE: 1/2" = 1'-0"

REVISION		
REVISION NUMBER	REVISION DATE	REVISION DESCRIPTION
D1	9.16.20	INITIAL RELEASE
---	---	---

QUOTE: ----
CONFIGURATION: ----
PROJECT: ----
DIST.: ----

DESIGN SET: D1	SIZE B
MODEL: M200	SHEET 5 OF 5
SHEET TITLE: M200 ELECTRICAL DETAIL	
DRAWN: TLM	9.16.2020

THESE DRAWINGS SHOW OUR INTERPRETATION OF THE PRINCIPAL PLANS AND SPECIFICATIONS. THEY ARE SUBMITTED AS CHECK PRINTS REQUIRING REVIEW AND POSSIBLE REVISIONS TO DETAILS AND/OR DIMENSIONS. BEFORE FABRICATION OF MATERIALS CAN BEGIN, DRAWING PACKAGE MUST MATCH O.P.M. ORDER AND BE RETURNED SIGNED AND DATED. IF THERE ARE SIZE DISCREPANCIES BETWEEN THIS DRAWING PACKAGE AND O.P.M. ORDER, THESE DRAWING SUPERCEDE O.P.M. DIMENSIONS. IF CONSIDERABLY DIFFERENT, A RE-SUBMITTAL OF O.P.M. ORDER WILL BE REQUIRED. THIS SIGNATURE INDICATES PURCHASER'S FULL ACCEPTANCE OF DETAILS SHOWN AND THE PRODUCT IN CONFORMANCE TO SAME. THESE DESIGNS AND DRAWINGS ARE THE EXCLUSIVE PROPERTY OF SMOKE GUARD, INC. AND ARE NOT TO BE USED OR DUPLICATED WITHOUT PERMISSIONS.