



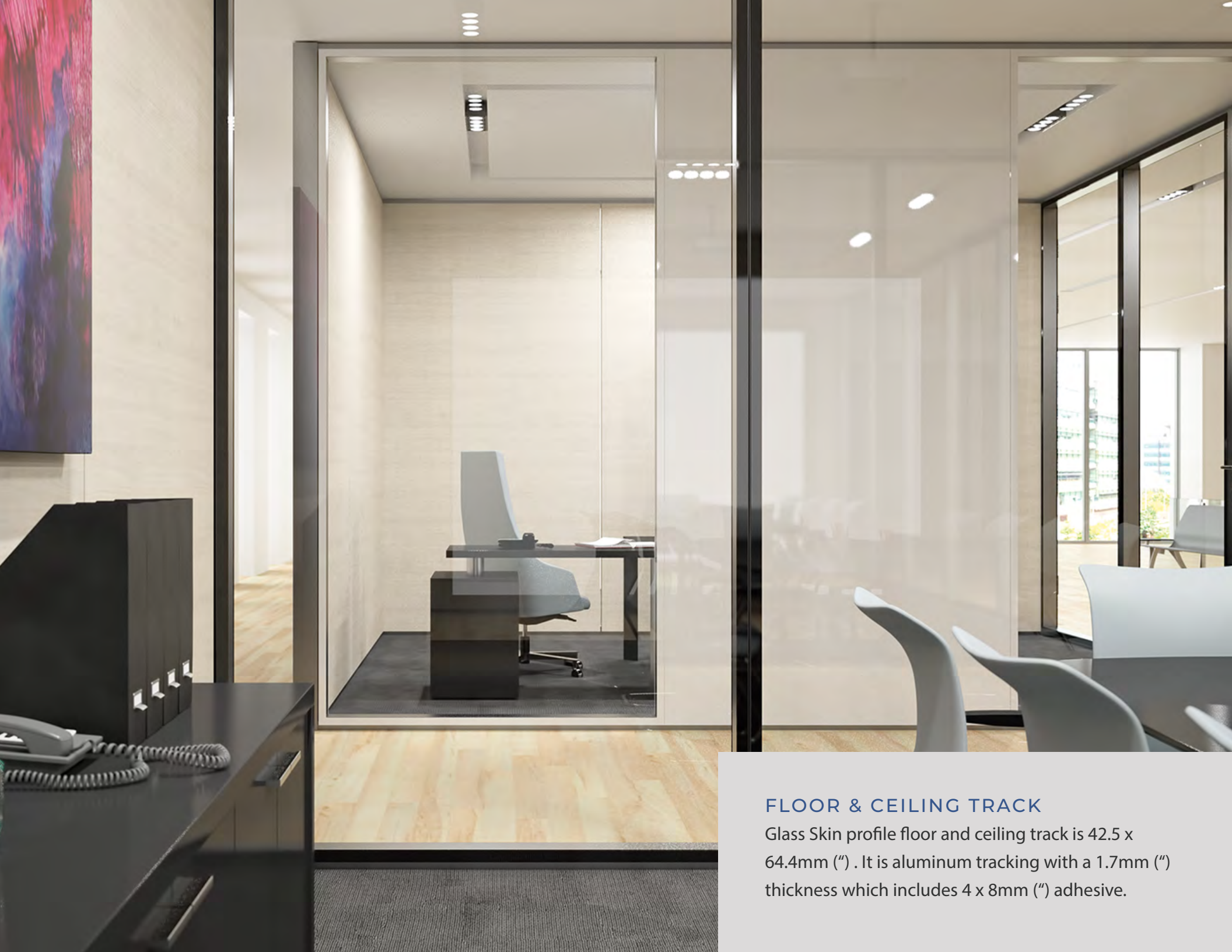
GLASS SKIN DESIGN GUIDE



GLASS SKIN

Skin is an office partition of superior performance. Conceptualized for high-end projects where robustness and minimalism are both required. It is a structural partition that gives the feeling that it is built only with glass, with no vertical profiles in sight. The Glass Skin was developed in order to enable an acoustic performance of 40 dB Rw and up to 49 dB Rw without compromising the aesthetics.





FLOOR & CEILING TRACK

Glass Skin profile floor and ceiling track is 42.5 x 64.4mm (") . It is aluminum tracking with a 1.7mm (") thickness which includes 4 x 8mm (") adhesive.

GLASS MODULES

The male and female Glass Skin profile are each 54 x 33mm (2 1/8" x 1 5/16") with a total thickness of 108mm. Thick aluminum of 1.5mm (1/16") is used with 20 x 1mm (3/4" x 3/64") double sided adhesive 3M strip to accommodate the glass panels.

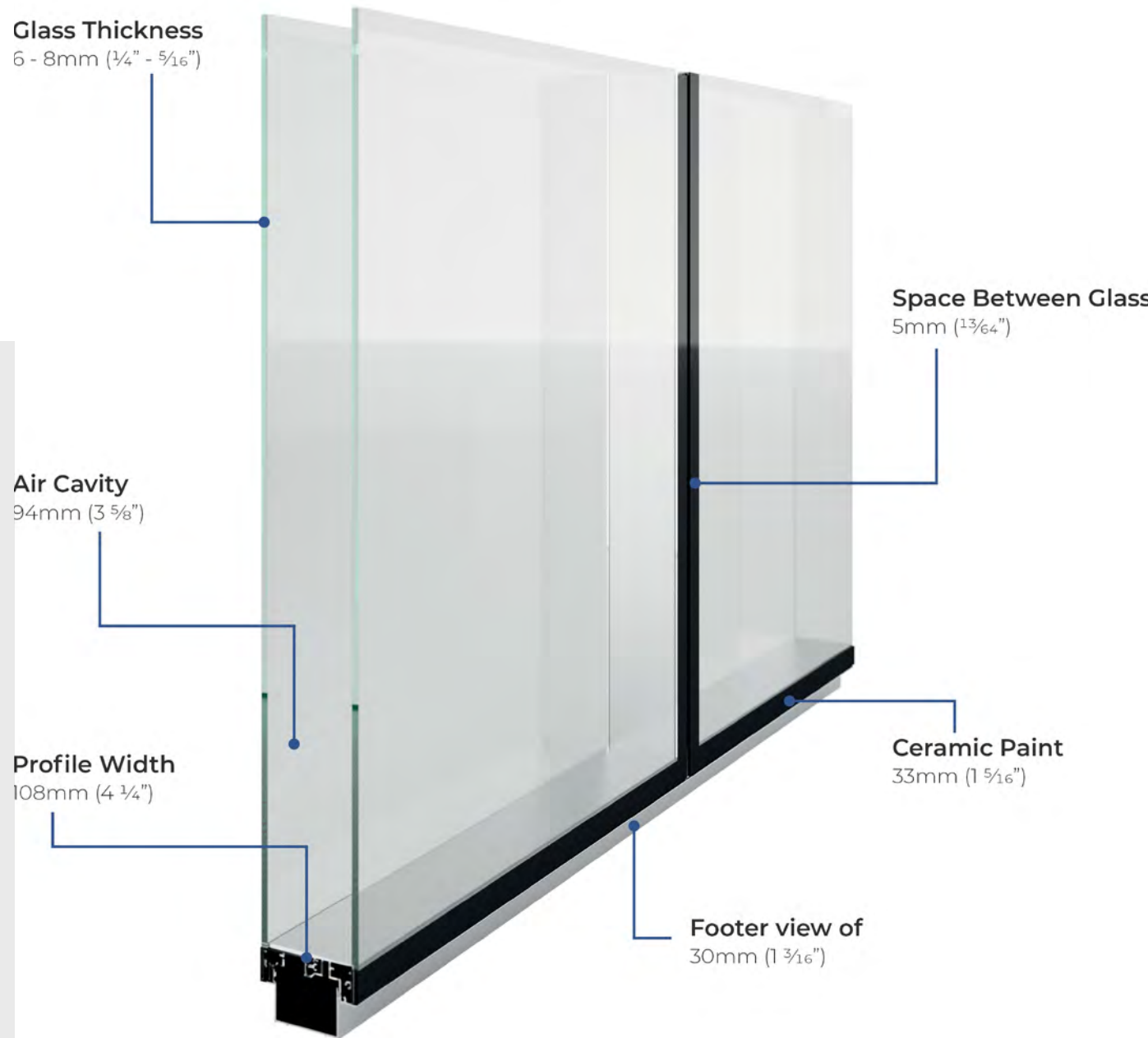
GLASS

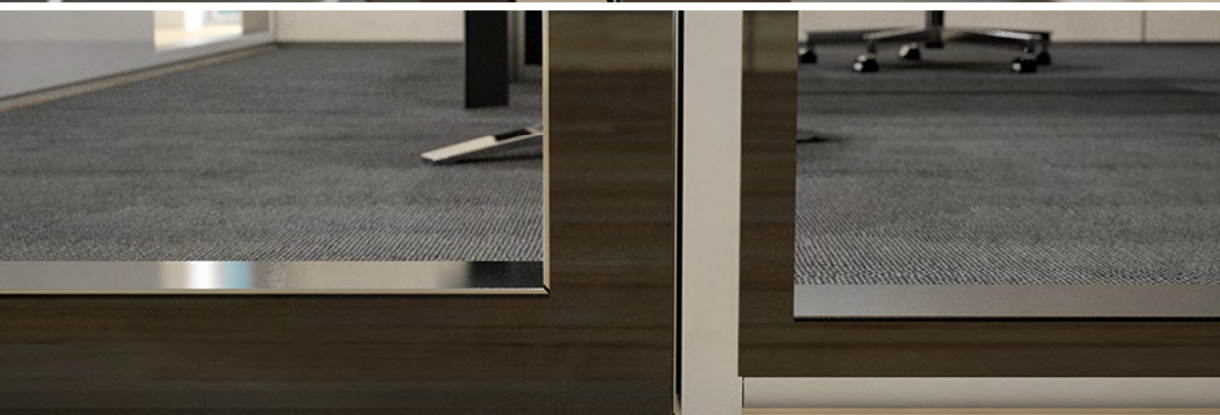
Two glass panels with a space between them of 94mm (3 5/8"). They are 6mm (1/4") and 8mm (3/8") tempered glass both pieces are glass receive a ceramic paint on its frame (RAL colour to define)

MAXIMUM MODULATIONS

Modules must have a maximum of 3000 x 1200mm (10' x 4')

other modulations can be analysed on a project-by-project basis





DOORS

The door has a thickness of 108mm (4 1/4") which is created in an aluminum frame with two pieces of tempered glass. One piece is 8mm (3/8") thick which is placed on the outside of the room and the second 6mm (1/4") on the inside, both pieces of glass are coated in ceramic paint. Doors also receive double sealing rubber and an acoustic sealing brush to enhance performance.

GLASS SKIN



GLASS SKIN MODULES

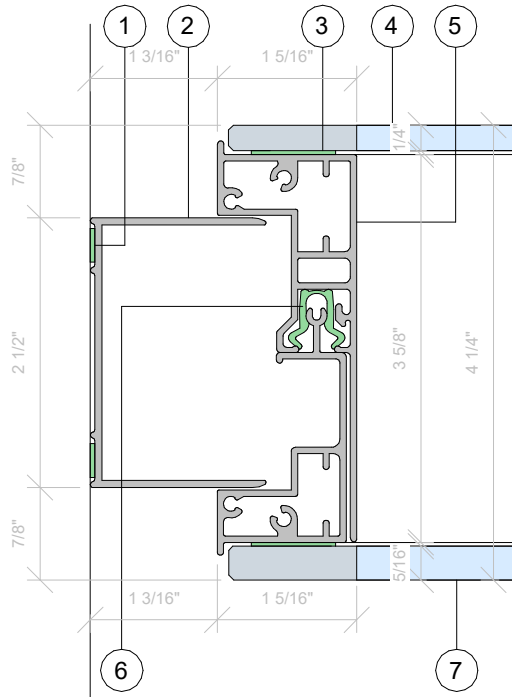


GLASS SKIN MODULES WITH
PA 100 OPAQUE

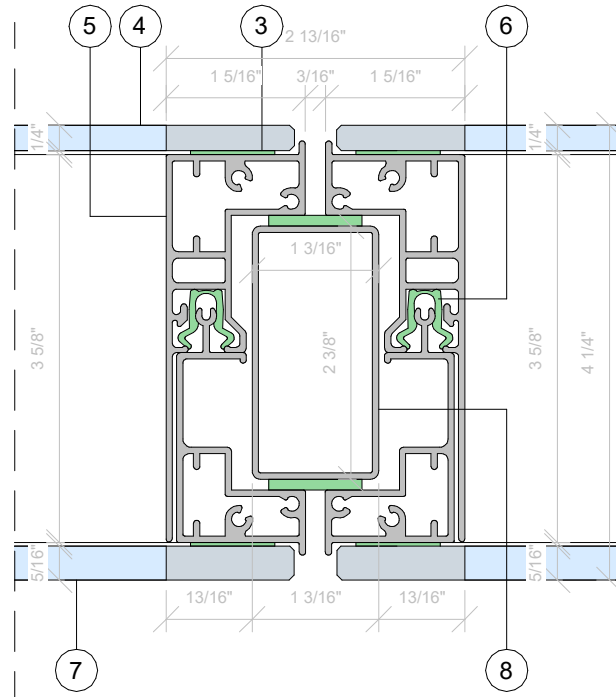


GLASS SKIN DOOR

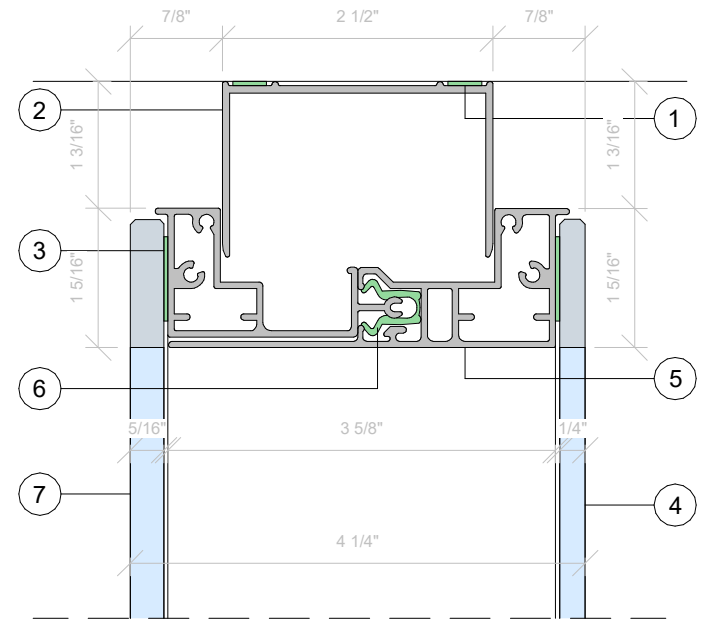




SECTION A



SECTION B



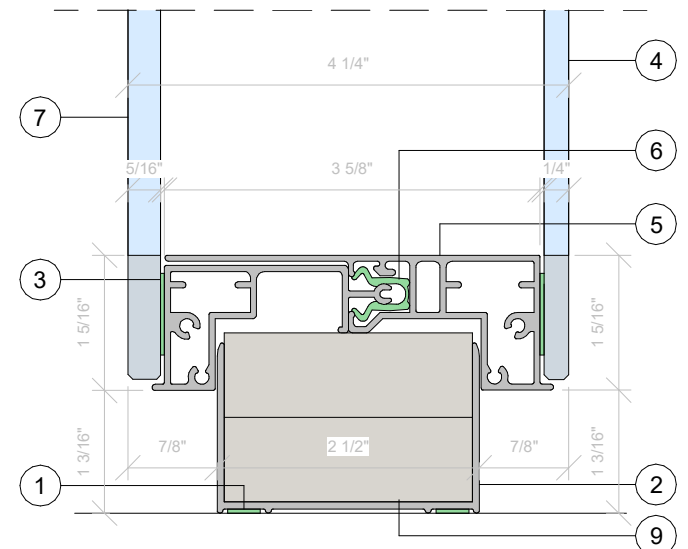
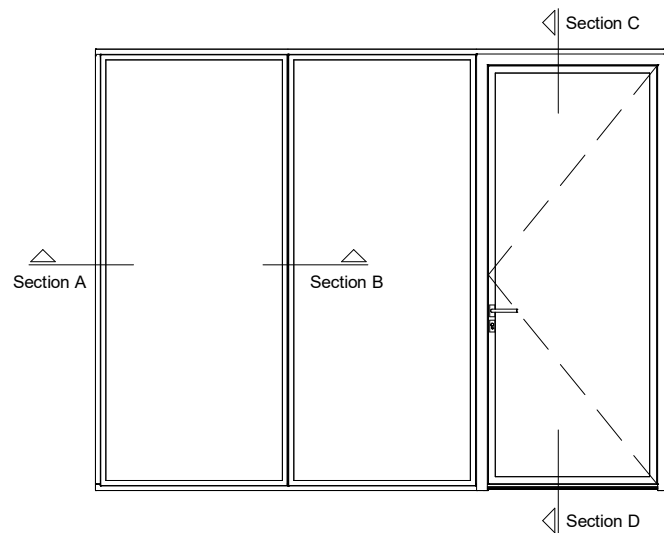
SECTION C

TECH. DETAILS

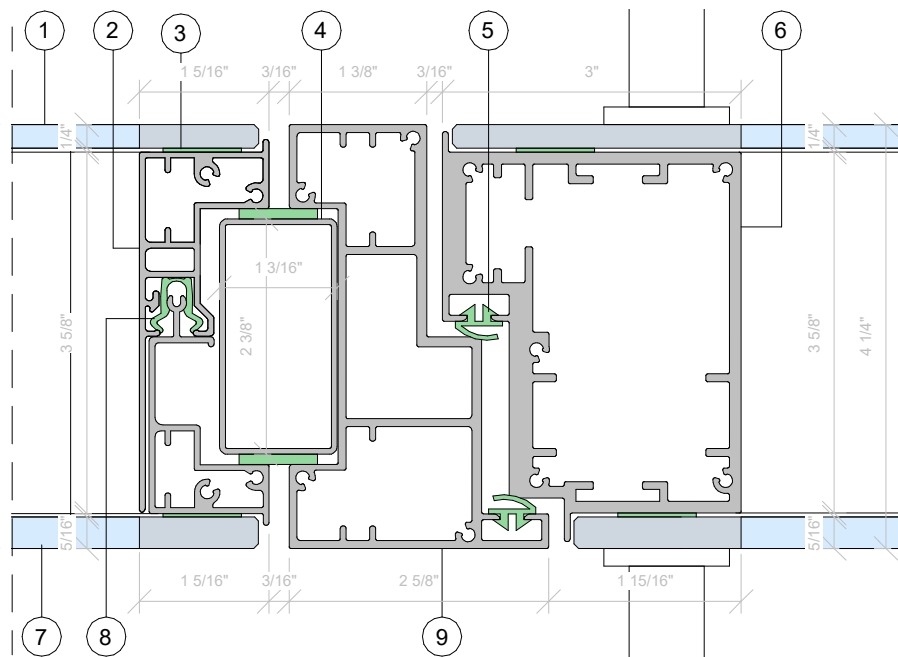
GLASS SKIN PANEL

E: 1/2

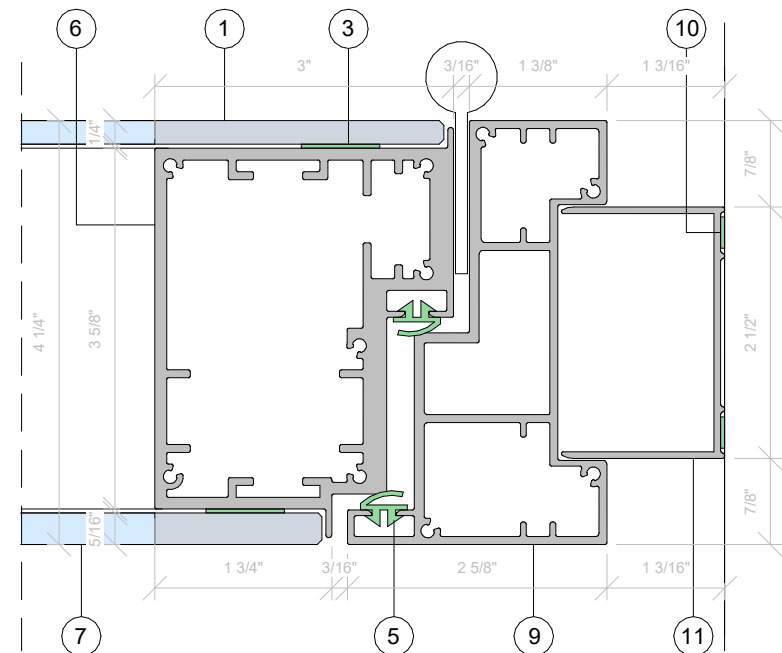
1. Acoustic Foam
2. U Profile
3. THB Glue tape 20 x 1mm ($\frac{3}{4}$ " x $\frac{3}{64}$ ")
4. 6mm ($\frac{1}{4}$ ") Glass
5. Glass Skin Profile
6. Nylon Clip
7. 8mm ($\frac{1}{4}$ ") Glass
8. 60 x 30mm ($2\frac{3}{8}$ " x $1\frac{3}{16}$ ") Galvanized Steel Tube
9. Leveler shim



SECTION D



SECTION A



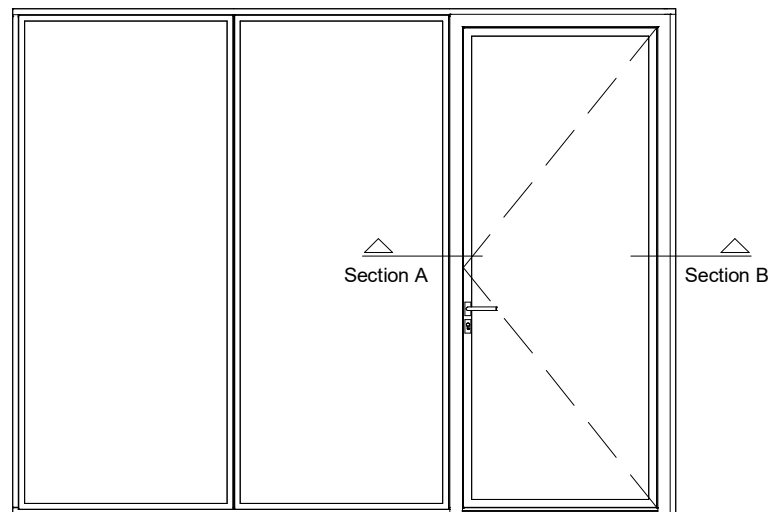
SECTION B

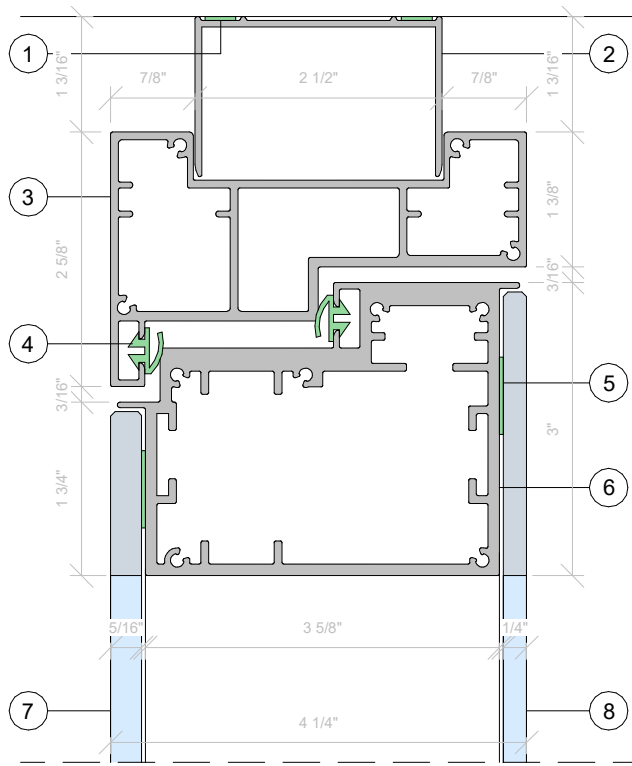
TECH. DETAILS

GLASS SKIN DOOR

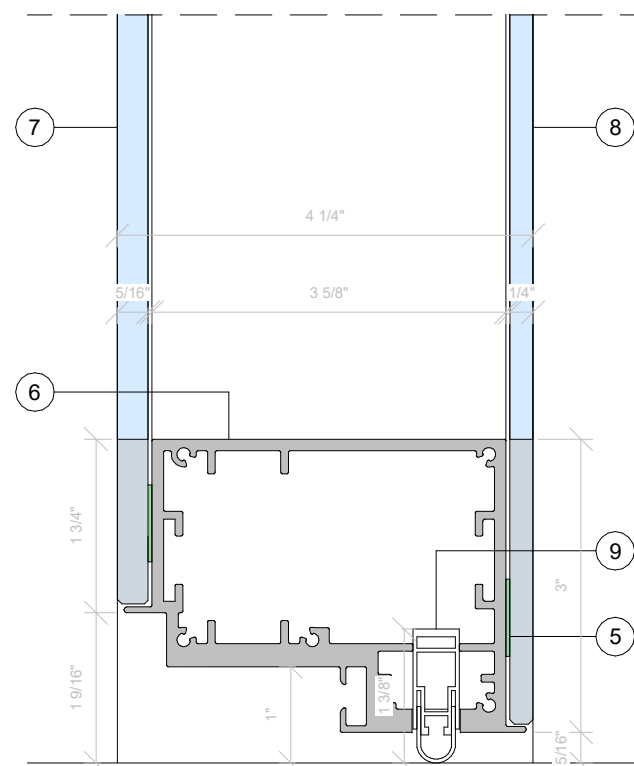
E: 1/2

1. 6mm (1/4") Glass
2. Glass Skin Profile
3. THB Glue tape 20 x 1mm (3/4" x 3/64")
4. 60 x 30mm (2 3/8" x 1 3/16") Galvanized Steel Tube
5. Door Rubber
6. Glass Skin Door Profile
7. 8mm (5/8") Glass
8. Nylon Clip
9. Glass Skin Door Frame
10. Acoustic Foam
11. U Profile





SECTION A



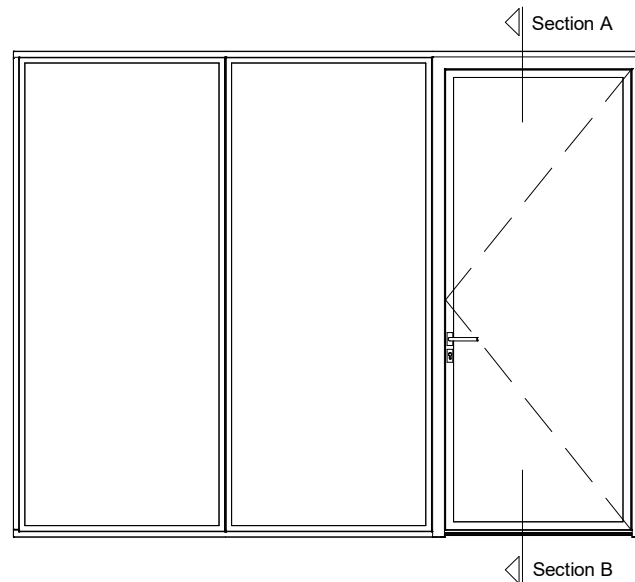
SECTION B

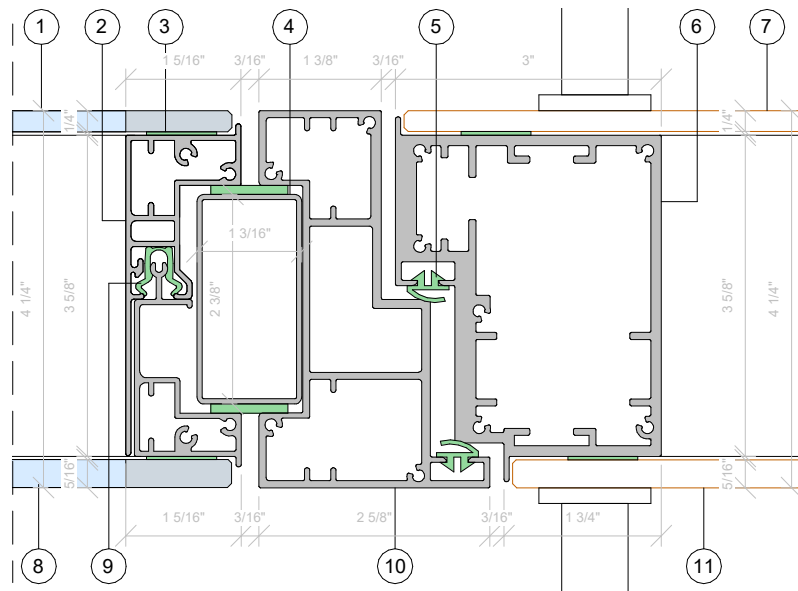
TECH. DETAILS

GLASS SKIN DOOR

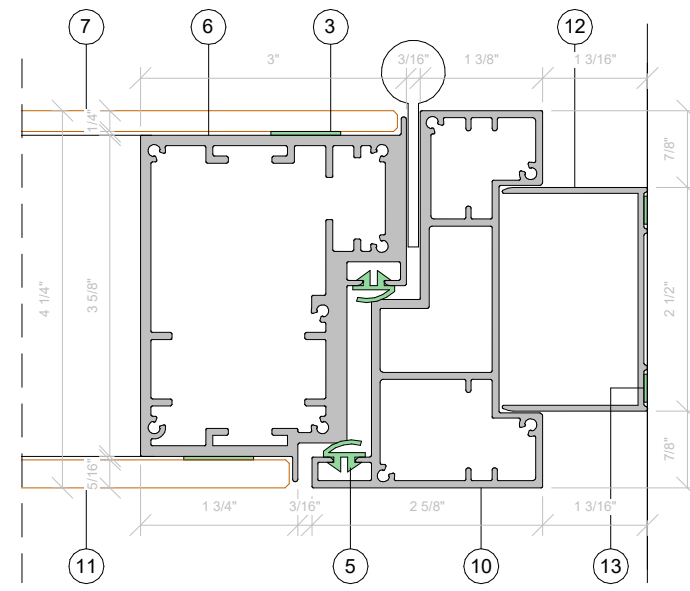
E: 1/2

1. Acoustic Foam
2. U Profile
3. Glass Skin Door Frame
4. Door Rubber
5. THB Glue tape 20 x 1mm ($\frac{3}{4}$ " x $\frac{3}{64}$ ")
6. Glass Skin Door Profile
7. 8mm ($\frac{3}{8}$ ") Glass
8. 6mm ($\frac{1}{4}$ ") Glass
9. Acoustic Drop Down Seal





SECTION A



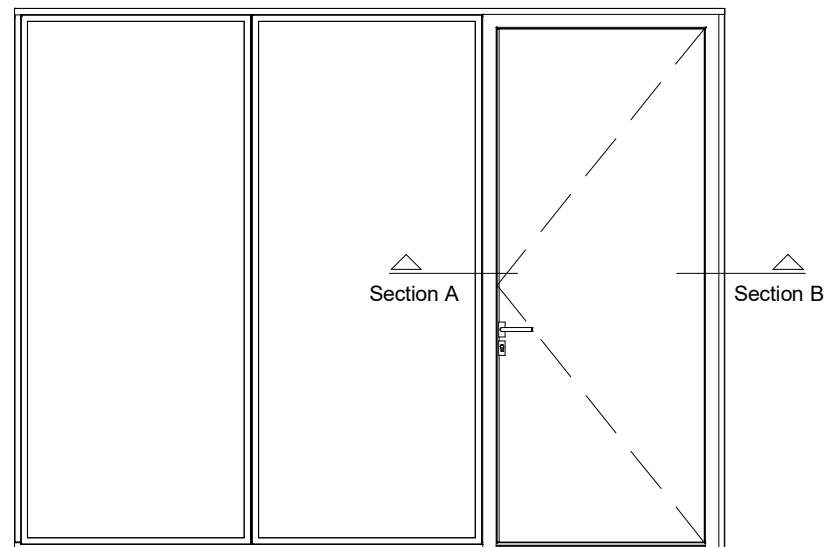
SECTION B

TECH. DETAILS

GLASS SKIN OPAQUE DOOR

E: 1/2

1. 6mm (1/4") Glass
2. Glass Skin Profile
3. THB Glue tape 20 x 1mm (3/4" x 3/64")
4. 60 x 30mm (2 3/8" x 1 3/16") Galvanized Steel Tube
5. Door Rubber
6. Glass Skin Door Profile
7. 6mm (1/4") Opaque Panel
8. 8mm (3/8") Glass
9. Nylon Clip
10. Glass Skin Door Frame
11. 8mm (3/8") Opaque Panel
12. U Profile
13. Acoustic Foam

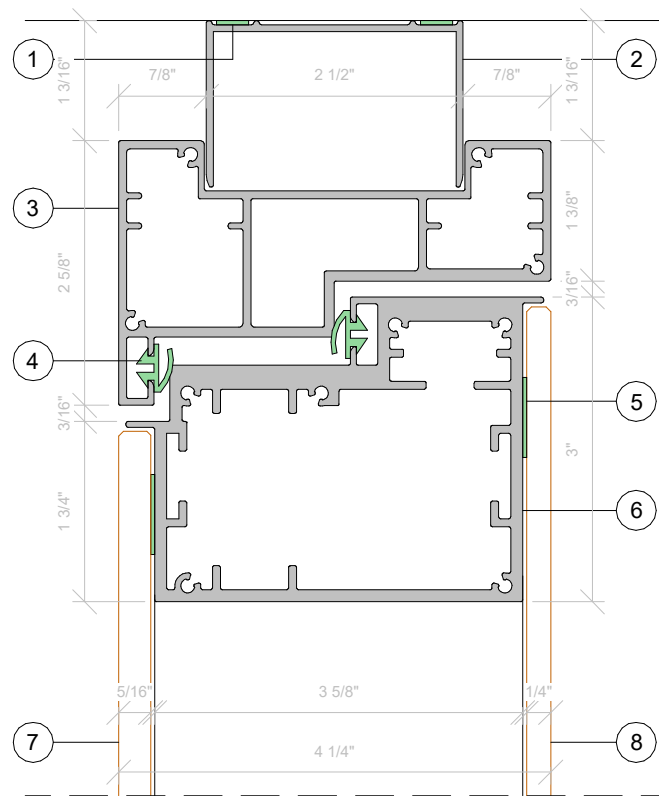


TECH. DETAILS

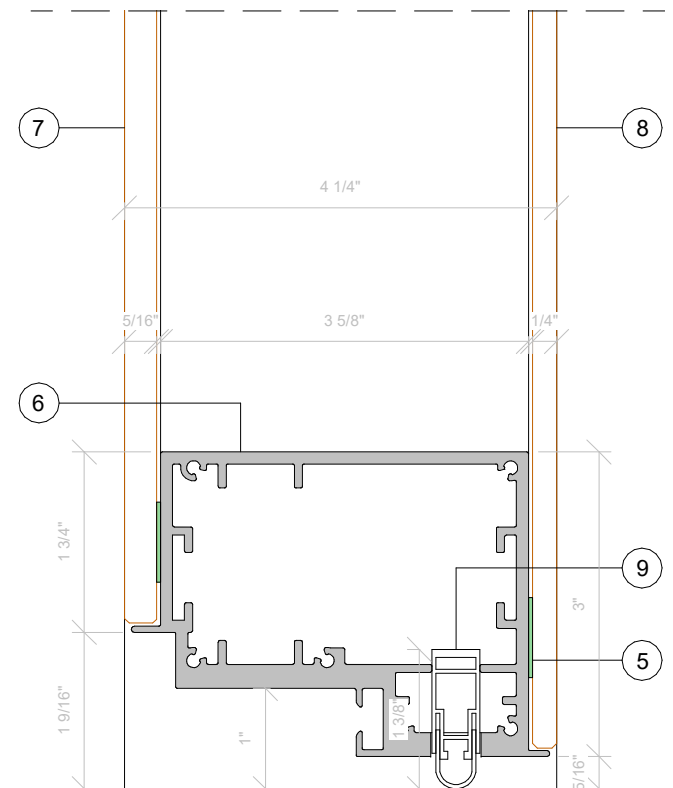
GLASS SKIN OPAQUE DOOR

E: 1/2

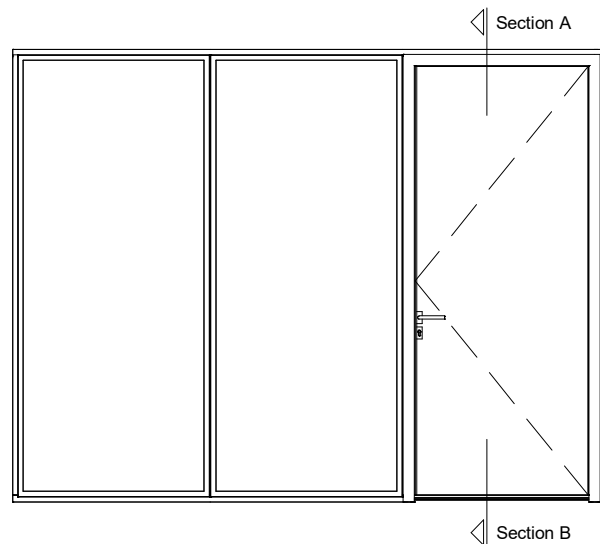
1. Acoustic Foam
2. U Profile
3. Glass Skin Door Frame
4. Door Rubber
5. THB Glue tape 20 x 1mm ($\frac{3}{4}$ " x $\frac{3}{64}$ ")
6. Glass Skin Door Profile
7. 8mm ($\frac{3}{8}$ ") Opaque Panel
8. 6mm ($\frac{1}{4}$ ") Opaque Panel
9. Acoustic Drop Down Seal

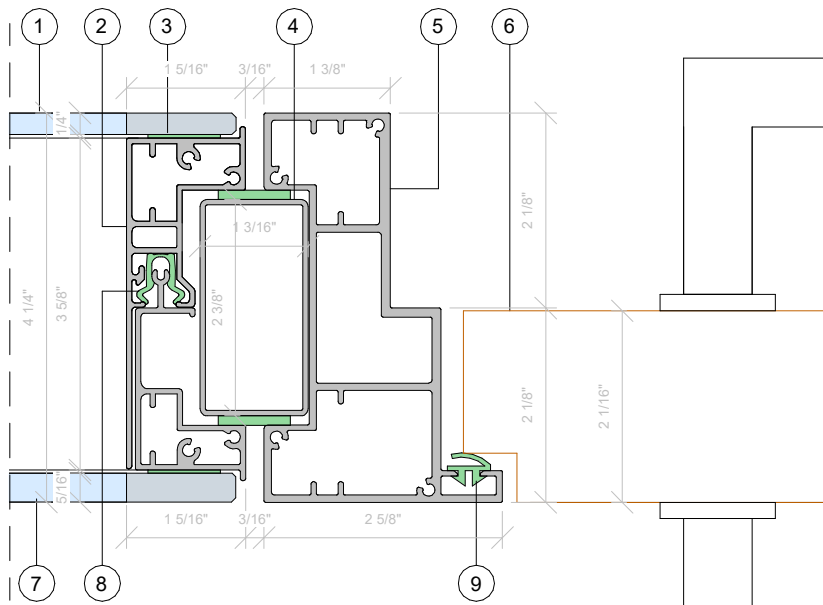


SECTION A

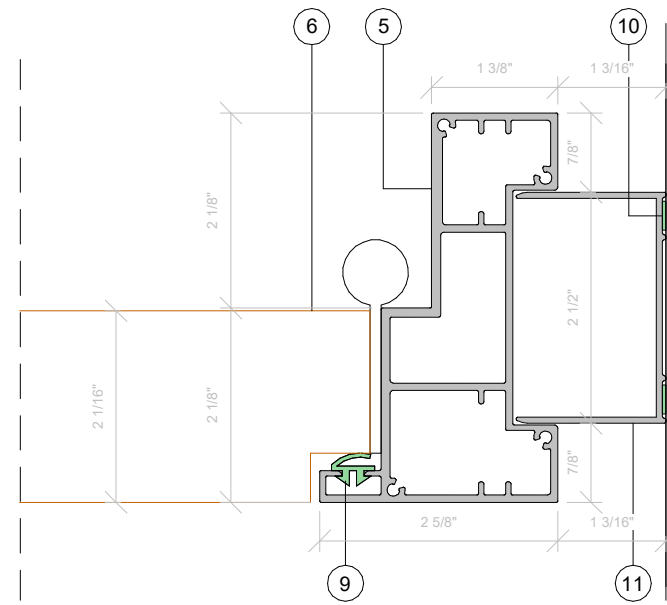


SECTION B





SECTION A



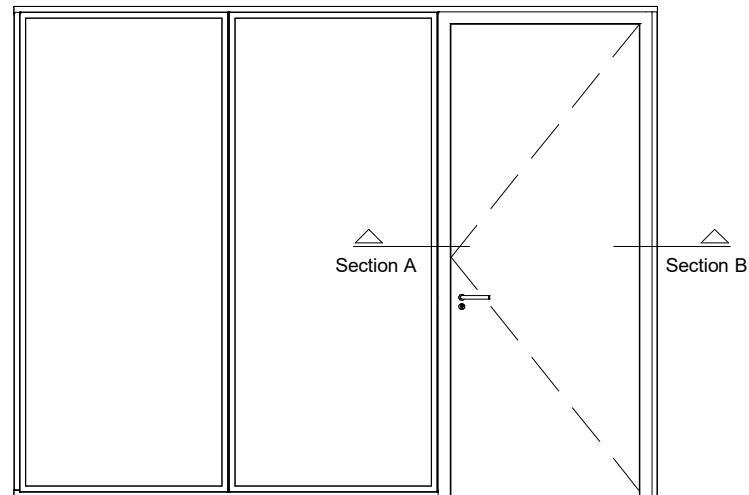
SECTION B

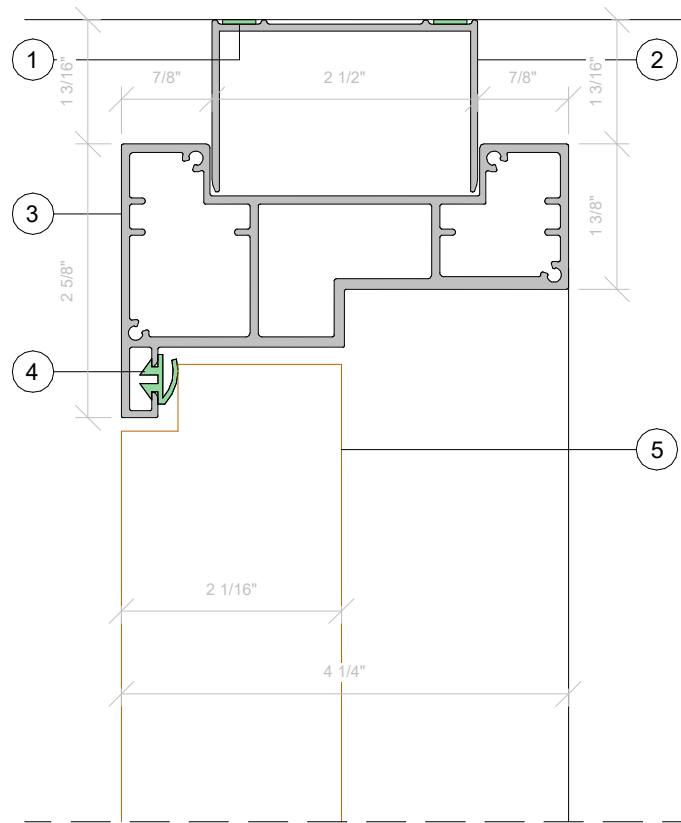
TECH. DETAILS

50MM (2") GLASS SKIN OPAQUE DOOR

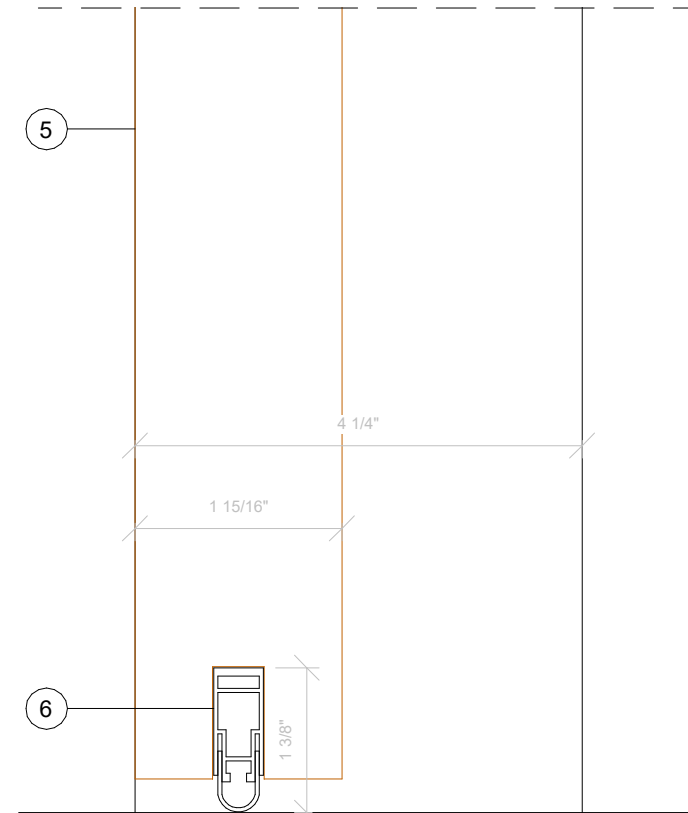
E: 1/2

1. 6mm (1/4") Glass
2. Glass Skin Profile
3. THB Glue tape 20 x 1mm (3/4" x 3/64")
4. 60 x 30mm (2 3/8" x 1 3/8") Galvanized Steel Tube
5. Glass Skin Door Frame
6. 50mm (2") Opaque Panel
7. 8mm (3/8") Glass
8. Nylon Clip
9. Door Rubber
10. Acoustic Foam
11. U Profile





SECTION A



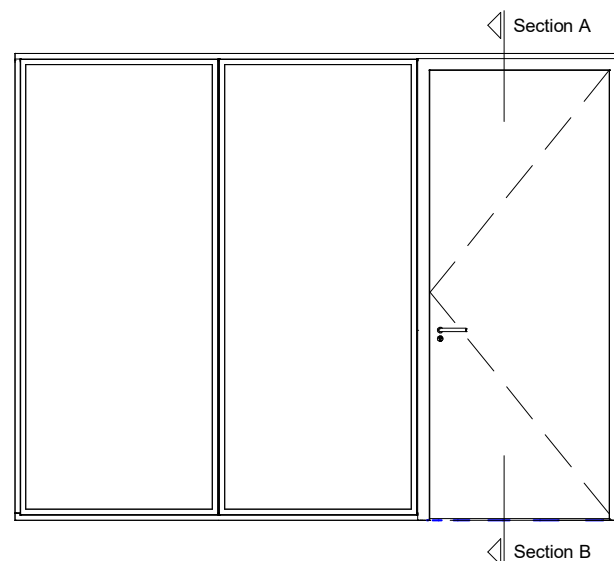
SECTION B

TECH. DETAILS

50MM (2") GLASS SKIN
OPAQUE DOOR

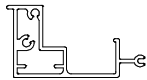
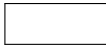
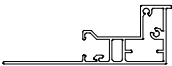





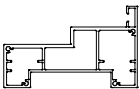
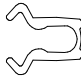
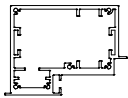
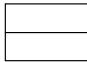
E: 1/2

1. Acoustic Foam
2. U Profile
3. Glass Skin Door Frame
4. Door Rubber
5. 50mm (2") Opaque Panel
6. Acoustic Drop Down Seal



TECH. DETAILS

CONNECTIONS

ALUMINUM COMPONENTS			OTHER COMPONENTS		
PRODUCT REFERENCE	DETAIL	DESCRIPTION	PRODUCT REFERENCE	DETAIL	DESCRIPTION
L82679		Glass Skin Male Profile	- 4 x 8mm (5/32" x 3/8") White for Ceiling (IS00030010) - 4 x 8mm (5/32" x 3/8") Black for the Floor (IS00030009)		Glass Skin Male Profile
L82680		Glass Skin Female Profile	Vedex AD001 - Black		Glass Skin Female Profile
LA00050008		60 x 30mm (2 3/8" x 1 3/16") Galvanized Steel Tube	A7200		THB Glue Tape 20 x 1mm (3/4" x 3/64")
CA-75-57		U Profile	- Ellen Matic Soundproof for Acoustic Requirement - Ellen Matic Uniproof w/ out acoustic requirement		Acoustic Drop Down Seal
L82708		Glass Skin Door Frame	- 750P (Black) - 750 NAT (White)		Nylon Clip
L82719		Glass Skin Door Profile	1901P (59mm (2 5/16"))		Leveler Shim







LINESYSTEMS.CA