

SECTOR BROCHURE

# K-12 EDUCATION







K-12 EDUCATION

# SPACE MANAGEMENT

## SKYFOLD

Easy to use and fully automatic, Skyfold partitions offers state-of-the-art acoustics ranging from STC 48 to 60 and innovative partition panels that fold vertically in an accordion style.

Client's greatest concerns with vertically operable walls:

- Student safety and installation costs

How using Skyfold overcomes these concerns:

- Two switches (or touch screens) required on each side of the wall for operation
- Bottom obstruction safety sensor
- Electromagnetic brake rated for 200% of the motor's torque rating
- Skyfold systems require far less structural support than other products
- Modular design allows for lower installation cost



## MODERNFOLD

Satisfy a variety of needs from basic sight separation to sight and sound separation with Modernfold's line of durable, high quality space division products.

Client's greatest concerns with folding partitions:

- Maintenance and repairs

How using Modernfold overcomes these concerns:

- All steel track & trolleys outlast plastic wheels and aluminum track commonly used by other manufacturers
- Welded steel panel faces withstand typical "wear and tear" far better than drywall faced panels used by other manufacturers
- Lifetime warranty on hinges backed by Modernfold, a market leader in operable walls for over 95 years







K-12 EDUCATION

# FIRE & LIFE SAFETY

## SMOKEGUARD

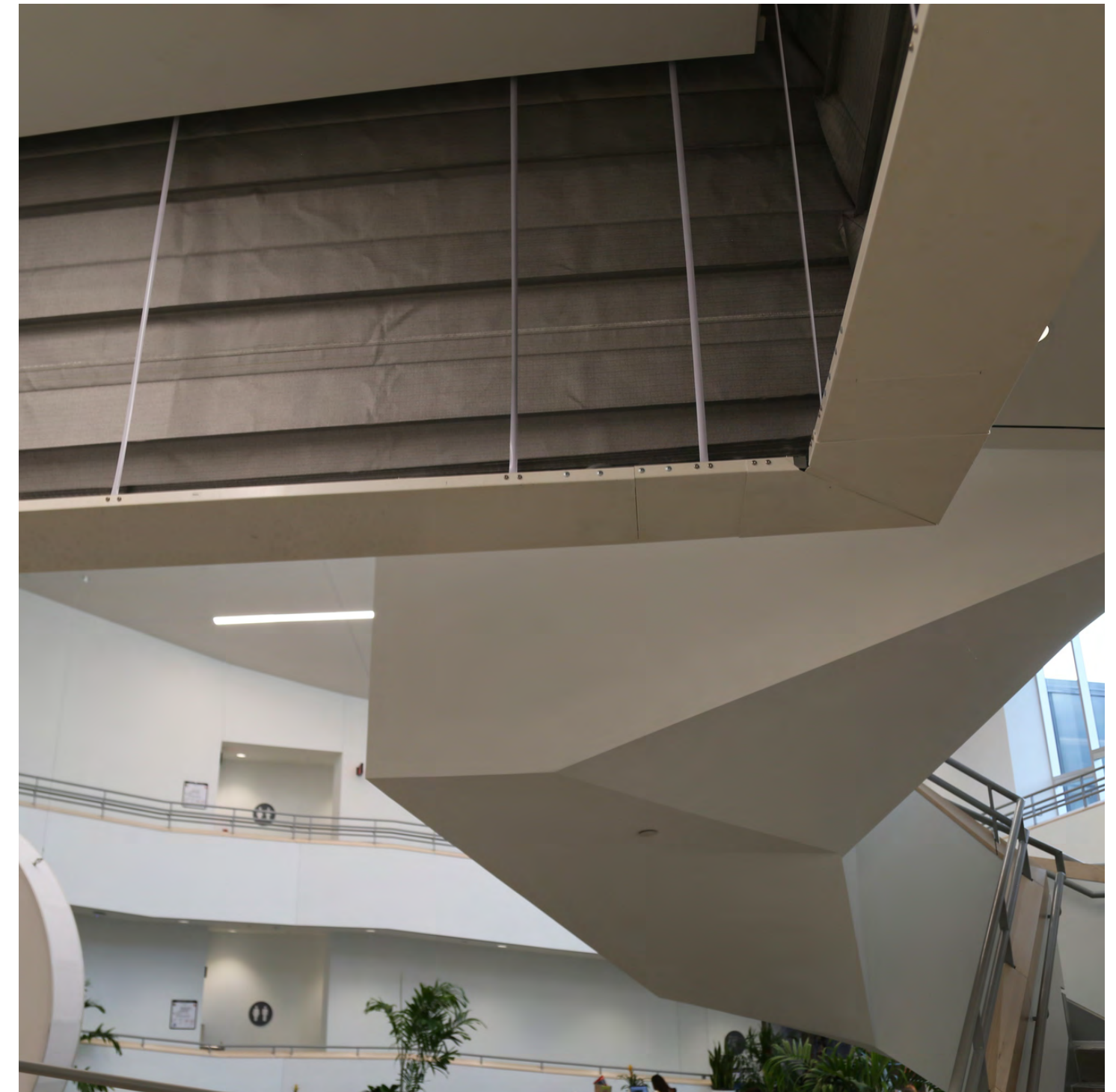
Fire retardant curtains, sometimes referred to as fire or smoke curtains, are curtains specially designed to keep building occupants safe from both heat and smoke during a fire. While many commercial buildings already utilize fire curtains, a growing number of schools now have these curtains installed for student and staff protection.

Client's greatest concerns with fire and smoke door products:

- Housing space & esthetics

How using Smokeguard overcomes these concerns:

- Smaller housing units, with most being between 160mm x 160mm – 225mm x 260mm
- Powder coated white ceiling covers (or select any RAL colour)
- Low profile side guide and jambs







K-12 EDUCATION

# DAYLIGHTING

## SOLATUBE

Kalwall has been daylighting the educational market across Ontario for more than five decades at every station, from kindergartens to major universities. Our balanced, natural daylighting creates more productive, comfortable learning environments that illuminate.

Client’s greatest concerns with fenestration products:

- Cost, thermal performance, and longevity

How using Kalwall overcomes these concerns:

- Lower upfront cost than typical curtain wall systems
- Self cleaning and virtually maintenance free
- Highest insulating daylight system in North America, with up to R20 panels
- Solar heat gain coefficient values typically between 0.15-0.08
- Colour stable, south Florida tested, and designed to be a lifetime building product in Ontario

## SOLATUBE

Solatube Daylighting Systems feature innovative optical technologies that balance light output and thermal performance, delivering optimal light levels without uncomfortable heat gain, glare or shifting patterns of light. Solatube’s unique design also minimizes impact on the building envelope, allows for easy integration with electrical lighting systems and eliminates ongoing maintenance.

The result is a cost-effective and energy-efficient solution that brings daylight to previously unreachable spaces—like interior classrooms, gymnasiums, and windowless libraries.

Client’s greatest concerns with top mounted daylighting products:

- Leaks and condensation, and cost

How using Solatube overcomes these concerns:

- High impact, optically advanced domes which meet DoD Antiterrorism standards and FM rated
- One piece leak-proof & insulated flashing
- FEMA Safe Room rated for Tornados and Hurricanes
- Incredibly cost effective



## STRUCTURES UNLIMITED

Create an inviting entrance while mitigating glare and solar heat gain with a StructuresUnlimited fabricated system. StructuresUnlimited has engineered, fabricated, and installed countless canopy and covered walkway designs for the hospitality market for almost 50 years. A single source solution to design, engineer, fabricate, and erect cost-effective entrance canopies and skylights using factory finished, structural aluminum systems clad with Kalwall translucent panel.

Clients greatest concerns with entrance canopies:

- Cost & schedule implications

How using StructuresUnlimited overcomes these concerns:

- Lower total cost of ownership than traditional built-up canopy systems
- Single source from start to finish (no more “finger pointing”)
- Always on-time and on-budget
- Factory finished aluminum framing



# VELUX MODULAR SKYLIGHTS

## LONGLIGHT 5-30°

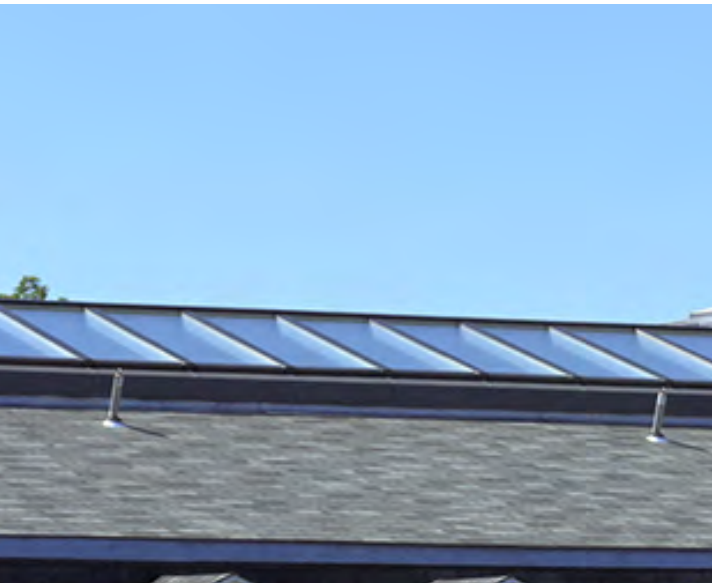
A mono-pitched solution ideal for flat roofs

Suitable For:

- Flat and sloped roof
- Flat roofing material
- Opening width in roof min./max. 0.6-3.1 m (for venting modules 0.8-2.5 m)
- Rooflight installation pitch 5-30°

Key benefits:

- Subtle expression thanks to low pitch design
- Adding daylight to hallways, corridors and large rooms
- Great value-for-money due to fast and hassle-free installation



## NORTHLIGHT 25-90°

A rooflight series for sloped, shed or saw tooth roofs.

Suitable For:

- Sloped, shed or saw tooth roof
- Flat roofing material
- Opening width in roof min./max. 0.6-3.1 m (for venting modules 0.8-2.5 m)
- Rooflight installation pitch 25-90°

Key benefits:

- Possibility of upright design
- Prevents glare and lets in a soft light when facing North
- Designed for installation directly in sloped roofs without adding a sub-construction

## WALL-MOUNTED LONGLIGHT 5-45°

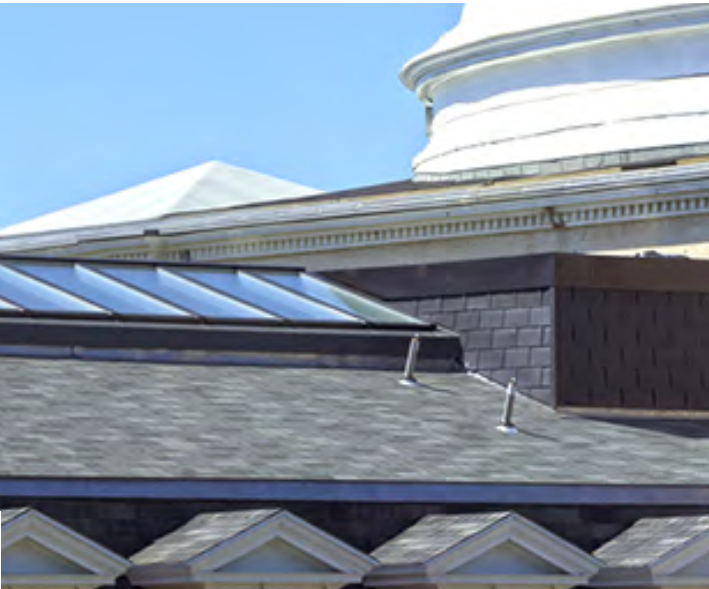
A rooflight series used to connect different building heights with a flat roof as the base and a vertical wall at the top.

Suitable For:

- Roof type and material: Flat roof
- Opening width in roof min./max. 0.6-3.2 m (for venting modules 0.8-2.6 m)
- Rooflight installation pitch 5-45°

Key benefits:

- Enables innovative solutions for new buildings and extensions
- Adds daylight, height and space to a room
- Fast and easy installation



## RIDGELIGHT 25-40°

A dual pitched rooflight for installation on a flat roof or at a roof apex.

Suitable For:

- Flat roof and at the top of a sloped roof
- Flat roofing material
- Opening width in roof min./max 1.1-4.5 m (for venting modules 1.4-4.5 m)
- Rooflight installation pitch 25-40°

Key benefits:

- Ensures maximum daylight and thermal comfort
- Adds spaciousness to the area below
- Totally self-supporting solution



## CENTER RIDGE I-BEAM RIDGELIGHT

A dual pitched rooflight installed against each other on a steel beam\* to form a ridge

\*Steel beam is supplied by other vendors.

Suitable For:

- Flat & pitched roof type
- Large roof opening
- Rooflight installation pitch 5° to 40°

Key benefits:

- Ensures maximum daylight and thermal comfort
- Adds spaciousness to the area below
- Great design flexibility

## ATRIUM LONGLIGHT/RIDGELIGHT

Multiple rows of skylight modules that can be combined to create a large glass roof.

Suitable For:

- Flat roof
- Flat roofing material
- Roof opening extra large
- Rooflight installation pitch 5-40°

Key benefits:

- Ideal for construction of large, glazed roofs
- Easy, fast and secure installation
- Great design flexibility

## STEP LONGLIGHT/RIDGELIGHT

Multiple rows of skylight modules connected to create a large glass roof.

Suitable For:

- Flat roof
- Flat roofing material
- Roof opening extra large
- Rooflight installation pitch 5-25°

Key benefits:

- Prefabricated solution for large, glazed roofs
- Elegant design with option of slim beams between the rows/steps
- Maximum daylight through the roof



## ONTARIO

10 CARLOW CRT #8 WHITBY, ONTARIO, L1N 5Y9

**+1 800-803-1235**

## QUEBEC

1111 DR. FREDERIK-PHILIPS BOUL. 6TH FLOOR,  
SAINT-LAURENT, QUEBEC, H4M 2X6

**+1 514-600-5995**

**BAPGROUP.CA**



BRAVURA